

**Mountain Empire Model Railroaders Club &  
George L Carter Chapter of NRHS Newsletter**

**THE SIGNAL BRIDGE**

**AND**

**THE COAL ROAD**

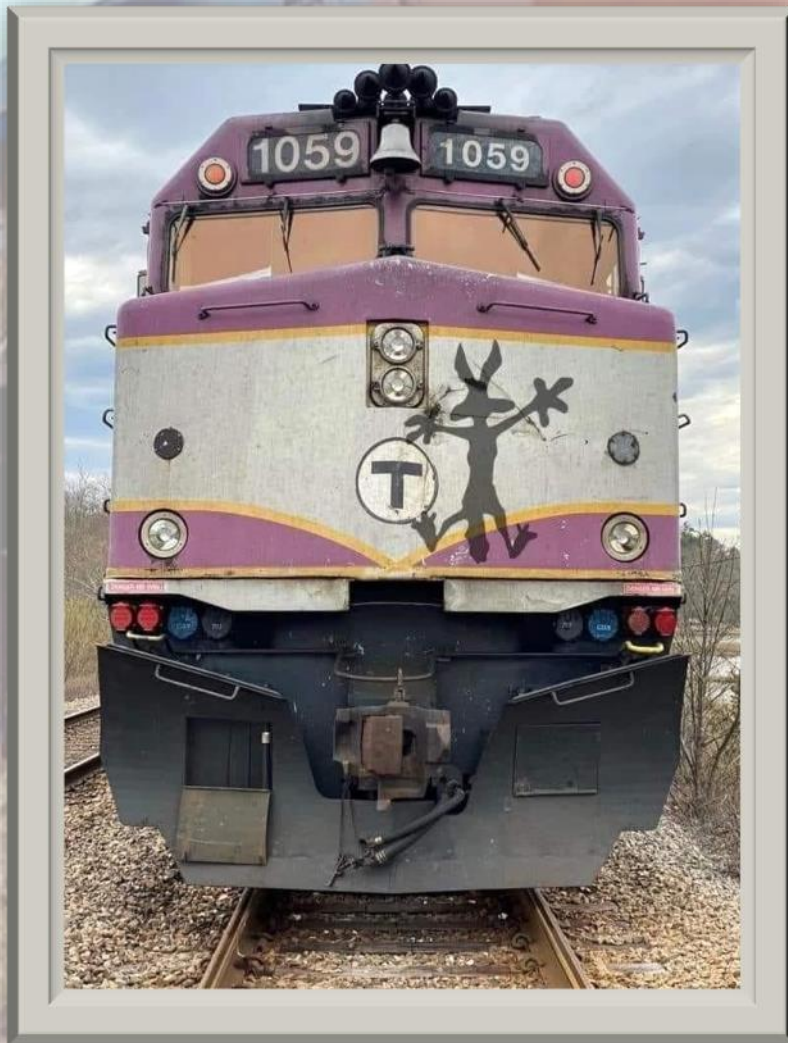
Volume 29 – Issue 2 February 2022

Cover photograph by Paul Haynes

**Lose Track of Time!**

**Inside this issue:**

Club Information	24
Club News	6-12, 20
Heritage Days	15-19
Lose Track of Time	1
Meeting Minutes	21 – 23
President's Msg	2-5
Wreck It Wednesday	13-14



## The View from the Engineer's Side of the Cab & The Drawbar



Is it spring or winter? This month of February can't seem to decide between lows in the 20s and highs in the 70s from one week to another as we wait out the sentence of 6 more weeks of winter imposed by that all-knowing groundhog in Pennsylvania. Despite the frequent changes in climate our railroad museum and our weekly Saturday visitors continue to be actively steaming into 2022. Our members continue to support the Carter Railroad Museum with Thursday night work nights and with up to 30 of us being present on some Saturdays to greet the public and to operate the layouts. The grip of covid seems to be lessening in our area with things beginning to seem a little more normal, however we will continue to try to protect each other by practicing as many CDC recommended health procedures as we can.

**Memberships:** Our annual membership renewal drives for 2022 officially ended on January 31, but we still have some members who have not sent in their dues for this year, and we would really hope that you will decide to remain active members in the Mountain Empire Model Railroaders or the George L. Carter Chapter NRHS, or both organizations. MEMRR members pay their treasurer, Mike Tarter, and the Carter Chapter folks submit their payments to that chapter's treasurer, John Dodge. The dues for both organizations remain the same as in past years (MEMRR members can find all the categories for membership on the MEMRR website) but the basic membership is \$30 for an adult member + \$6 for any additional members residing in the same household. Carter Chapter members pay both a local chapter membership fee of \$10 for a single adult or \$12 for a family membership + plus the national dues of \$50 for a single membership. The national dues add a little more expense to the wallet, but in addition to their electronic newsletters, and their bimonthly magazine, you have the opportunity as a member to attend regional and national meetings and conventions. Amenities not offered by our local independent MEMRR club.

To date, our **MEMRR** club membership is standing at more than 100 paid members for 2022, but I have a growing concern regarding the dropping membership of the **Carter Chapter NRHS** that currently is below the minimum of 10 members that is required to sustain a chapter based on the bylaws of the National Railroad Historical Society. If anyone reading to this point would like to join the Carter Chapter NRHS please let me (Fred Alsop) or John Dodge know and we will be happy to discuss this prototype national organization with you. The local chapter sponsors a high school student to the East RailCamp in Delaware each summer and runs up to 3 rail excursions annually for the public. It is a small chapter that makes a big difference to a lot of folks of all ages, and it really needs your help as a potential member right now.

**Sickbay:** Longtime member *Ruth Berry* is continuing to recover from Covid, and *John Carter* and members of his family have just passed through the effects of this virus and come out the other side as well. I just learned that *David Doughty's* wife, *Laura*, just lost her brother to Covid. We share our condolences to the Doughtys and congratulate those of you who have been stricken with this global virus and are returning to good health. Let's all do what we can to continue to protect ourselves and others.

(continued on page 3)

# The View from the Engineer's Side of the Cab & The Drawbar

*(continued from page 2)*

**Museum Concerns:** I am using this newsletter platform to stress once more that we are having some recent problems in shutting down the Carter Railroad Museum and securing the layouts. Therefore, I am raising the concerns so everyone is aware of the problem with the hope that we can work together to solve it. It really should not take much effort on anyone's part, but all of us who are working in the museum, operating layouts, and being a part of two organizations that have free access to a state university building 24/7 have to realize what a privilege your membership is and that with it comes a modicum of responsibility. Twice now in less than 3 weeks folks operating in the railroad museum have failed to shut down the facility properly. This carelessness is not good for the equipment or the thousands of dollars' worth of layouts, locomotives, rolling stock, railroad artifacts, etc., that are housed there. In the first incident power to some layouts was left on, window air conditioners were not shut off, banners in the hallway were not removed and stored, and some display lights were not turned off. I produced a paper that was posted and hand-delivered to the most active members, of all ages, pointing out the problems listed above as well as others. I did this to inform and educate those members who may have joined us lately and may have been unaware of their responsibilities to properly close up the facility if they were the last ones to leave, especially after public visitation hours on Saturdays. Yesterday, Monday 21 February, a member entering the big gallery found the computer was still on as well as the track power for the HO-Scale, MEMRR layout. **This kind of disregard for club and museum property has got to stop.** I don't want to have to resort to checking the filed video from our security cameras at the ETSU Security Office to discover who is not doing their job when they leave, I just want you to be responsible as a member and properly shut down and secure the facility.

Because of the above concerns, and others regarding proper operation of trains on the MEMRR layout, the Carter Railroad Museum Coordinators have had two Thursday night meetings to discuss and formulate an educational, instructive set of guidelines for the layout, as well as for other layouts in the museum. This group of dedicated members, including club officers, are creating a draft document that will address the above issues, and others that have been brought to the group's attention as well, in these meetings that will continue until the document is completed and approved by this group. At that point, it will be shared with the entire membership for further review and revision based on input from our members. Once in final form it will be voted on for approval and adoption into our bylaws.

One additional point that is being addressed is the parental guidance of our younger members who are under 16 years of age or those who may need special attention even if they are older than this. Our concern for these youngsters' safety and for them to be under the direct supervision of a parent at all times when they are operating trains on the club layout. **Parents, you must stay with your son or daughter at all times when they are operating trains on the layout (bathroom breaks allowed of course).**

**Meetings:** Because of the continued presence of COVID-19, we will continue to provide in-person and hybrid meetings using zoom technologies for those who want to attend the meetings from home. Our meetings will remain open to all members and will continue to be held on the 3<sup>rd</sup> Monday of the month for the Carter Chapter NRHS and the 3<sup>rd</sup> Tuesday of the month for the MEMRR members. The ETSU meeting room for the Carter Chapter is Brown Hall 133 and for the MEMRR is Brown Hall 223. Meetings times continue to begin at 6:30 p.m. I will be out of state for the March meeting and am asking the two vice presidents for

*(continued on page 4)*

# The View from the Engineer's Side of the Cab & The Drawbar

(continued from page 3)

the respective clubs to conduct those meetings in case I am unable to connect with you to preside from New York, NY. Any member with a smart phone can attend the zoom meetings on that device by downloading the free zoom app. and going online to get the invitation code to join us. You are encouraged to attend in person if at all possible as the discussions are livelier and more productive when club/chapter business is being discussed.

Museum Coordinators meetings will continue to be held in the museum building in the small conference room upstairs in room 235 at 6:00 p.m. on the Thursday of the month preceding club meetings. Everyone is invited to attend these open meetings with our coordinators.

## Museum News:

- \*Work continues to progress on the MEMRR club layout on the logging/mountain area on the modules near the gallery entrance under the leadership of *Rick Mulholland, John Carter*, and others. More work is planned by members for the depot area at the other corner of the front row of club modules.
- \*N-Scale continues to get a facelift with the replacement of old lichen "foliage" with new foam trees, bushes and ground cover. Additionally, *Mike Tarter, Jim Gorny*, and others are adding new rockfaces and other scenery upgrades to this layout.
- \*One last major building is being created by *Fred* for the Elk Park section of the ET&WNC RR layout before the crew will be moving on to scenery work on the unique water tank at the Hampton section of the layout. Some preliminary work has already been done there by *Mike Sager* and *Fred*.
- \*Some members of the Carter RR Museum Advisory Board met in February to discuss contingency plans that should be considered when it comes time to move into a new location. Following that meeting I met with former mayor, and Advisory Board Member, *Jenny Brock* and local entrepreneur, *Scott Andrew*, to discuss possible new home sites for our museum in the coming year. *Scott* showed us a property he has on South Roan Street that might be used for temporary storage of our existing layouts and holdings if we don't have a building ready for the museum to occupy by the time we have to move from our present location. That building would provide enough space that would allow the construction of additional benchwork for the HO and the "Tweetsie", and perhaps, other layouts in the interim if we had to wait a while for a final location. My preference would be to move from **A** to **B**, with **A** being our current location, and **B** being the museum's new home. However, we must also assume that the move would be from **A** to **B** to **C** with **B** serving as a temporary storage space for the contents of the museum, and, hopefully with enough additional space that some new benchwork could be constructed there, before moving in **C** as our final destination. As I learn more about what our future may hold I will convey that information to everyone. At this juncture, with the folks I am talking with about a new museum home, I feel things remain very positive.

(continued on page 5)

# The View from the Engineer's Side of the Cab & The Drawbar

(continued from page 4)

**Rail Excursion May 14, 2022:** A Rail & Sail Day excursion is being planned to be cohosted by the Carter Chapter NRHS and the Carter RR Museum. We will be bused to Knoxville from the ETSU campus on Saturday, May 14<sup>th</sup> using Premier Transportation's modern coaches, one of them being an 81-passenger double-decker bus. We will ride on the 3-Rivers Rambler Railroad in the morning and have a luncheon cruise on the paddle-wheeled boat, *The Star of Knoxville*, in the afternoon. Make your plans to join us and support the museum that is your railroad home and the Carter Chapter NRHS. Details and applications will be available soon in hard copy at the Railroad Museum and on the MEMRR website. This is a great daytrip. You should come and enjoy it with us even if you have made the venture in a prior year. Bring the family, and/or some of your friends and let's go have a good time.

**Annual Big Train Show:** June 3-4 are the dates for this ever-growing model railroad sales and display event. **Roger Teinert** and his committee have been working hard for months to bring this big show back to the ETSU Mini-Dome and we already have commitments for more than 100 tables from vendors who are excited about this event coming back after a 2-year absence caused by COVID-19 pandemic in 2020 and extensive remodeling of the ETSU facility in the summer of 2021. We will need a lot of help getting everything up and running before, during and after the train show. Please plan to lend a hand. ***Roger's*** Committee is meeting the 3<sup>rd</sup> Monday of the month in Brown Hall 133 at 5:30 p.m. and everyone is welcome to attend.

There are always lots of activities associated with our railroad clubs and the Carter Railroad Museum and you are a big part of it. If you have missed some of our meetings, or you haven't been to the museum on a Saturday running trains for the public, and for the pleasure of just operating one of your models, or one of the museum's, please don't be a stranger. Come join the fun. Thursday afternoons and evening are worknights and we could use your help and expertise there as well. Listen to the sound of the whistle of the train in the night and dream of all the destinations yet to come.

*Fred J. Absop III*

Director, George L. Carter Railroad Museum, ETSU

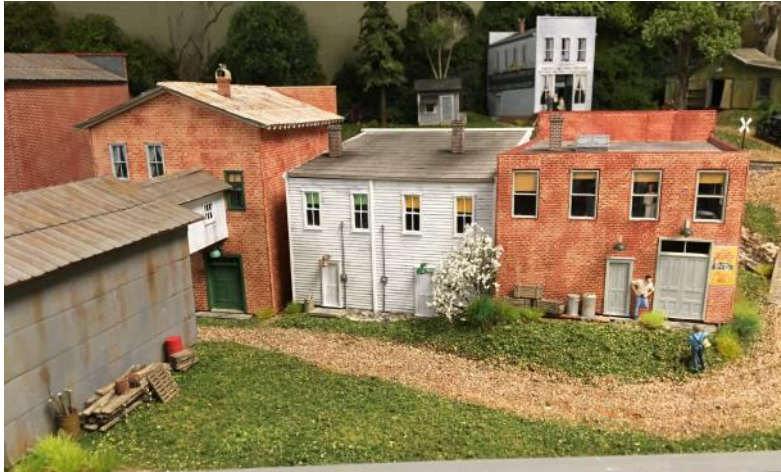
President, Mountain Empire Model Railroaders

President, George L. Carter Chapter NRHS

# Club News

## Tweetsie Layout Update : Article and photographs by Logan Heaton

Although most of the major work on Elk Park was completed over the holiday break a few weeks ago, there is still plenty to do. One more building remains but while preparing what is needed for this last build for this section of the layout Dr. Alsop also has been hard at work adding some finer details starting at the rear of the buildings and making his way towards the other side and across the rails. So far small pieces such as



lights, wood piles and even some old advertisements have been added to the buildings. Power boxes have been custom made by Dr. Alsop for each building and additional scenes have been made, including a local Elk Park lady stepping out onto her porch and watching her pet play in the yard behind the dirt road.



## Club News

The crew of our Little Engineer Room created this great welcome sign to greet our guests entering the museum!



**We would love to know more about you,  
your layout, or your travels!**

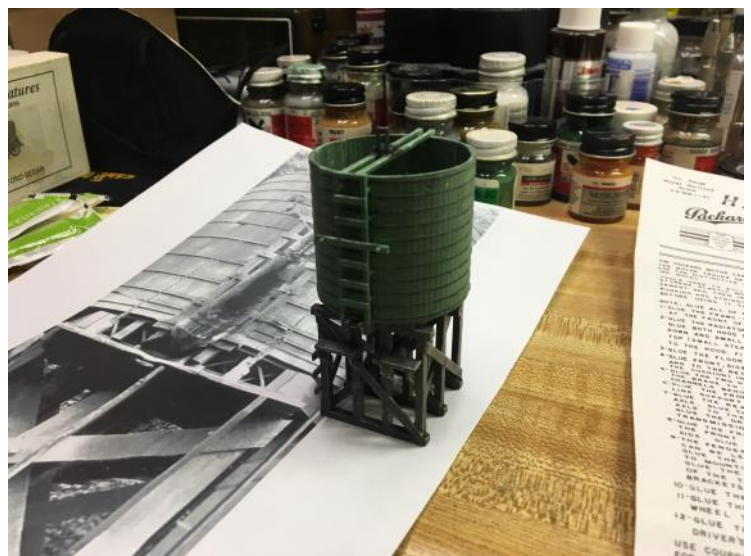
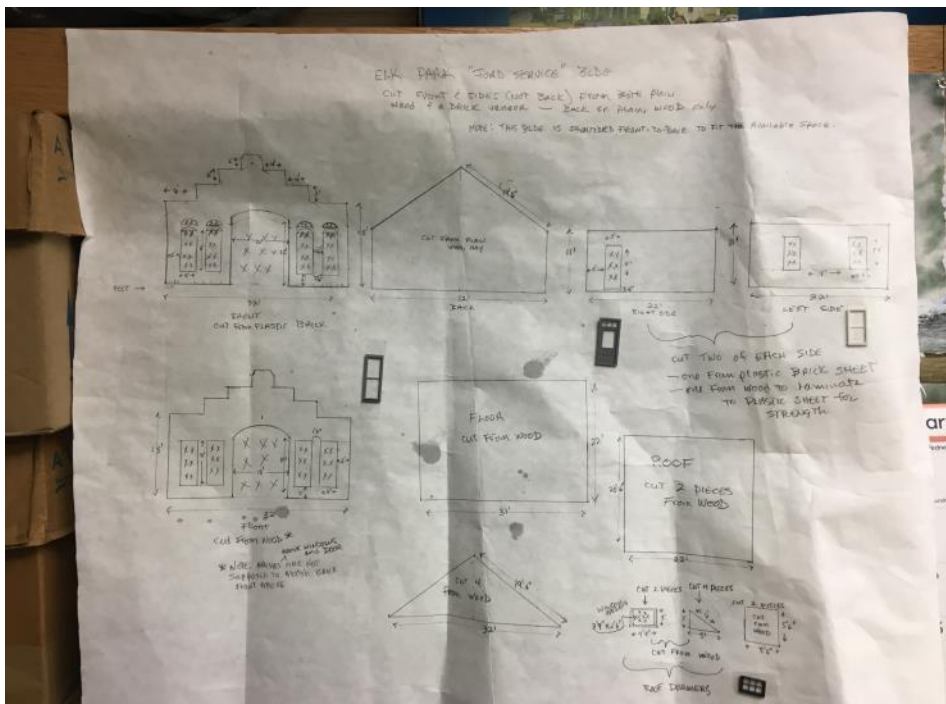
\*\*\*\*\*

**IF YOU WOULD LIKE TO SHARE YOUR STORY  
WITH FELLOW CLUB MEMBERS IN A FUTURE NEWSLETTER,  
PLEASE SEND VIA EMAIL TO OUR EDITOR AT  
[cathysmithmemrr@yahoo.com](mailto:cathysmithmemrr@yahoo.com)**

# Club News

## Tweetsie Layout Update : Article and photographs by Logan Heaton

Multiple projects are currently underway and making steady progress. The Ford Service building, which is the last Elk Park building, has been drawn up. As of this update Bill Smith has used Dr. Alsop's drawings and entered the building into the CAD program, and Benjamin Merritt has taken the CAD drawings and cut the buildings utilizing the laser cutter in the workshop getting the pieces ready to be assembled. While that is happening, Dr. Alsop has also gotten started on one of the 3D printed water towers from Merritt 3D Designs & Printing. Currently the main structure has been prepared and painted getting ready for detail pieces. Finally, while waiting on the pieces needed for those two projects Dr. Alsop continues on detail work for Elk Park, currently putting vehicles and figures together for the town including this one which is a kit of a 1922 Packard. It is all coming down to the final details and the layout is getting that much closer to completion!





## Club News

### Tweetsie Layout Update Elk Park : Article and photographs by Logan Heaton

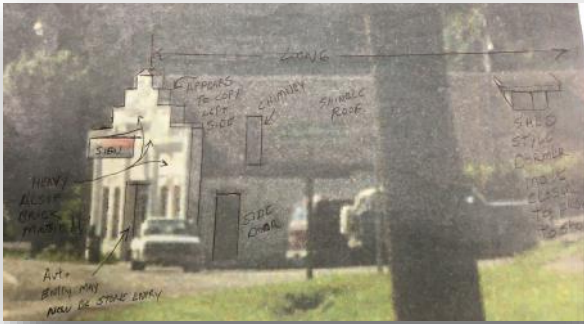
A quick update from last week's progress as we see the newest addition to Elk Park has been put together and placed out on the layout. Dr. Alsop completed the kit of the 1922 Packard as one of the new road vehicles around town, adding a bit more activity to the scene. Like the work with the rest of the layout the detail with this model is amazing, with additional details such as the driver and load along with the weathering which really helps it become another example of the level of excellence we strive for with every part of this layout.



## Club News

**Tweetsie Layout Update:** Article by Logan Heaton, photos by Ben Merritt

A follow-up on last week's progress as the Ford Servicing building has been cut out and ready for assembly. Dr. Alsop has made some quick work putting the building together along with installing the doors and windows. The building has also been primed and painted getting a start on that stage. Now some may notice the building is a bit smaller compared to the original. That's because due to our current setup we don't have the space to build the structure to its full size similar to the engine shed in Johnson City. With that said, just like the engine shed, this building has also been made so that when in the future we can expand the exhibit the building can also be built to its full specifications. For now, this is still a great representation of the building as it once stood years ago and with some clever placement and scenery, we can still make it look like the full building is there.



## Club News

### Tweetsie Layout Update White Rock : Article and photographs by Logan Heaton

Out at White Rock the first of the new ET&WNC water towers have been completed and installed on the layout. Over the week between the different projects updating the layout Dr. Alsop finished the pulley work and attached the spout along with additional weathering and details for the first water tower from Merritt 3D Design and Printing. Even an added water effect has been put in as the tower poses with ET&WNC 4-6-0 ten-wheeler #12. Over time the towers across the layout will be updated with these amazing models that best represent the prototypes that would have been seen servicing the steam engines of the railroad.



# Club News from the Little Engineer's Room

Article and photographs by Logan Heaton

Hoping you had a wonderful Valentine's Day from all of us at the George L. Carter Railroad Museum!! Here are some snapshots of the great job our Little Engineer's Room crew did to decorate up the museum a bit for the holiday weekend.



## **Wreck It Wednesday:** even N scale has its issues...

Photo credits to Jonathan Gilliam



**Wreck It Wednesday:** The farmer was waiting for some supplies on the local train. Didn't know they did home deliveries...

Photo credits to Logan Heaton



## Heritage Days!

### Lil' Chicago Johnson City Railroads – Article and Photos by Logan Heaton

The many railroads of Johnson City were in full swing across our layouts from Fallen Flags to modern day power this past Saturday and we would like to thank all of you for coming out to see them and joining us for this celebration of our railroad history. We got a few shots of the different trains seen during the event that we hope you will all enjoy. Thank you to everyone again for joining us!!



*(continued on page 16)*

# Heritage Days!

## Lil' Chicago Johnson City Railroads – Article and Photos by Logan Heaton

(continued from page 15)



(continued on page 17)



# Heritage Days!

## Lil' Chicago Johnson City Railroads – Article and Photos by Logan Heaton

*(continued from page 16)*



*(continued on page 18)*

# Heritage Days!

## Lil' Chicago Johnson City Railroads – Article and Photos by Logan Heaton

(continued from page 17)



(continued on page 19)

# Heritage Days!

## Lil' Chicago Johnson City Railroads – Article and Photos by Logan Heaton

(continued from page 18)



## Club News

### The new 2022 calendars have arrived!!

These beautiful calendars will make the perfect stocking stuffer for the railroad buff in your family or maybe even an early gift to yourself featuring pictures of our layouts along with pictures of the actual railroads in action from fallen flags to modern railroads seen today. The calendars also feature meeting dates and special event dates for the year from Heritage Days to our Big Train Show. These amazing calendars can be picked up at our gift table for \$8.00 each or two for \$15.00 or if you decide to become a member of the museum we have a special deal of \$6.00 each or two for \$10.00 for members. Be sure to stop on by and grab a copy during your next visit!



## George L. Carter Chapter of NRHS Monthly Business Meeting Minutes- 2/14/22

Meeting called to order at 6:50 PM by President Fred Alsop (via ZOOM)

Members Present (on Zoom call): Fred Alsop, Mike Tarter, John Dodge

The meeting opened with concerned discussion about the low membership in the Carter NRHS chapter. With the popularity of the excursions and the train Show, we were a bit perplexed why the Carter Chapter does not have more members. Discussion on the cost of NRHS membership, national in addition to local chapter, and the benefits of National membership ensued. Membership costs are \$15 for local chapter and \$50 for the National group. Fred believes the National organization does not recognize a local chapter membership only.

Fred called for Officer Reports.

V.P. report, Roger Teinert: Roger is unable to join the meeting

Secretary's report: The interim Secretary, Mike Tarter, reported that the January 14th meeting minutes were published in the January Signal Bridge and Coal Road.

Treasurers' report, John Dodge: The Carter Chapter of NHRS has money and is financially solvent. There was some discussion of membership costs, encouraging more members, and the Carter Chapter events open to the public. Based on the enthusiasm of the public at Chapter events we would hope to attract more members.

Presidents report:

Fred tells us he plans to continue with hybrid In-person and Zoom meetings for the near future. The next in person meeting will be in room 131 of Brown Hall, ETSU Biology building on Feb. 14<sup>th</sup>. The Train Show committee meeting will be at the same location and day.

Old Business:

Fred reports planning for The Big Train Show for June 2022 is ongoing, with flyers, forms and calendars going out to prospective vendors; deposits for table rentals are coming in.

New Business:

The possible Event Calendar for 2022 was discussed, beginning with a possible Spring Fling social at a restaurant in March. We will be looking into a possible summer picnic.

A usual Spring, May 14<sup>th</sup>, Rail Excursion / field trip to Knoxville is scheduled - a repeat of the sold out trip last November. This will have a double deck bus for transport. Registration information will begin dissemination in the near future. Fred mentioned his wife Catherine has generously offered to help with correspondence for the excursion. [THANK YOU, Catherine!]

Fred reports there is no decision yet on eventual relocation.

There was discussion on how well attended the MEMRR Club has been recently, both members and visitors. This ties back to the opening discussion of NRHS membership.

The meeting was adjourned at 7:25

Respectfully submitted; Mike Tarter, Secretary

## MEMRR Monthly Business Meeting- 2/15/22

Attendees welcomed and Meeting called to order at 6:40 PM by President Fred Alsop

Members Present (or on Zoom call): Fred Alsop, Logan Heaton, Mike Tarter, Rick Mulholland, Ben Merritt, Bill Smith, John Carter, Robert Sullivan, Paul Haynes, Roger Teinert, Geoff Stunkard

There was opening discussion about placing ads on Facebook for the upcoming Train Show. And discussion about the membership in the Carter NRHS chapter. With the popularity of the excursions and the train Show, we were a bit perplexed why the Carter Chapter does not have more members. Discussion on the cost of NRHS membership, national in addition to local chapter, and the benefits of National membership.

Fred called for Officer Reports.

V.P. report - John Carter: John noted that Saturday operations are ongoing well. He passed along a member suggestion for 'hands-on clinics'; rock staining/painting, and scenery, for examples. Logan added that there are some such videos of clinics available online at YouTube. One he knows of is posted by James Rice. Mike Tarter mentioned that Saturday visitors are often very interested to watch us if we do any scenery work, and ask many questions.

Secretary's report- Mike Tarter: The January 18th meeting minutes were published in the January Signal Bridge and Coal Road. No one in the meeting had any corrections, so Mike made a motion to approve the minutes, Paul Haynes seconded, the members approved unanimously. Any corrections or additions to the meeting notes are always invited – please discuss any during our next business meeting.

Treasurers' report - Mike Tarter: Executive summary; the MEMRR has money and is financially solvent. The final financial report for January and interim financial report for February was given to the club President. Over 100 members have paid dues for 2022 membership, and all delinquent members are encouraged to do so soon. This opened the membership topic for discussion – someone noted it is difficult to always know who the members are. Fred reminded us that wearing club logo shirts and hats helps visitors identify us, especially if our name is embroidered. And that in the past we had Club nametags available (made by Bob Dunn) to wear to help visitors. There was discussion about reviving nametags, wearable on a lanyard or loop. Bill Smith offered to print them, and to add info on the tags about member position. Ben added that we could source magnetic nametags as well.

Librarian report- Dean Small, Wallace Shealy: (Reported by Fred) ETSU will be helping to barcode and catalog the Museum collection (approx. 2400 books and items). This will allow online access to the list, super helpful for researchers. Some unique items will remain Reference, thus would need to be read onsite.

Presidents report- Fred Alsop:

Fred tells us he plans to continue with hybrid In-person and Zoom meetings for the near future. The next in person meeting will be in room 223 of Brown Hall, ETSU Biology building on March 15<sup>th</sup>.

The Advisory Board (Fred, Geoff, Roger) met with Jenny Brock and others on the future relocation of the Museum and club- there is no firm decision yet on location but someplace on Walnut Street in Johnson City is certainly a possibility.

*(continued on page 23)*

## MEMRR Monthly Business Meeting- 2/15/22

*(continued from page 22)*

There was good discussion at the Coordinators meeting on Feb. 10<sup>th</sup> about new member orientation, regarding educating and training a new member on our operating standards (train length, for example), courtesy (like allocating track run time, and train speed), and end of day shut-down procedures. Fred will host a separate meeting on Thursday the 17<sup>th</sup> to go over a proposed codification of these.

Reminder - We have plenty of HOn3 annuals and 2022 Museum calendars available for sale.

### Old Business:

Planning for The Big Train Show for June 2022 is ongoing, with flyers, forms and calendars going out to prospective vendors. Roger Teinert held a coordinating meeting at 5:30. Ads are being posted in various magazines and newsletters. We have received interest or deposits from over 20 vendors requesting over 100 display tables, thus far.

Fred noted the progress in the yard area of the HO layout, and reminded us to let him know of any needs or plans.

### New Business:

There was much discussion about upcoming Excursions and social events. The "Rail and Sail" on May 14<sup>th</sup> will again be open to the public. A double deck bus has been reserved, price is \$95. Other possible tours / excursions mentioned: the Big South Fork, an old coal tipple in KY, the Bryson City Great Smoky Mountain RR train, the Cass Scenic RR in Elkhorn WV, the Cheat Valley RR, and the Spenser NC Museum of Transportation.

Locally, several social meetings / dinners are being considered and plans worked on. Suggestions included a picnic, the Black Olive and Bellavita restaurants. The Club will keep members informed.

Also locally, the ET&WNC Historical chapter is holding it's annual meeting on Memorial Day in Johnson City. This will include a special open house of the Tweetsie layout, tours, a dinner and presentations. More information is coming - MEMRR members may be interested in participating.

Roger Teinert brought up that the city of Erwin may acquire the 4 story CSX (formerly Clinchfield??) administration building adjacent to the abandoned CSX/Clinchfield Erwin train yard. The city would be interested in having a train related museum in part of the building, but it would not serve our Club needs.

Heritage Day - Geoff Stunkard: this months focus is on short lines and industrial rail.

No other new business was brought forth.

The meeting was adjourned at 7:41, and turned over to Rick Mulholland and Robert Sullivan who attended a huge train show in Amherst MA. The photos and video were amazing.

Respectfully submitted; Mike Tarter, Secretary

**Mountain Empire Model  
Railroaders Club**

Location:



George L. Carter Railroad Museum  
East Tennessee State University

**Business Meetings**

Held monthly on the  
3rd Tuesday at 6:30pm.

\*

**Weekly Work Nights**

Thursdays from 4pm until ?

**MEMRR Club Officers**

- **Club President & Director of George L Carter Railroad Museum, ETSU:** Fred Alsop  
alsopf@etsu.edu
- **Vice President:** John Carter  
carterjohn92@gmail.com
- **Secretary:** Mike Tarter  
miketarter06@gmail.com
- **Secretary:** Mike Tarter  
miketarter06@gmail.com
- **Webmasters:**  
Logan Heaton  
Ben Merritt  
Bill Smith  
memrrwebmaster@gmail.com
- **Newsletter Editor:**  
Cathy Smith

**George L. Carter**

**Chapter NRHS Officers:**

- **President:** Dr. Fred J. Alsop
- **Vice Pres:** Roger Teinert
- **Secretary:** Mike Tarter
- **Treasurer:** John W. Dodge,  
econguy2000@hotmail.com
- **Historian:** Carolyn Greg
- **National Representative to the NRHS:** Charlotte Pahr

# George L Carter Railroad Museum and MEMMR

The many colorful multiple railroads of the Midwest are featured at the George L. Carter Railroad Museum, located in the Campus Center Building of East Tennessee State University. The region encompassing Chicago, Detroit, Louisville, Milwaukee and St. Louis was the true epicenter of American commerce between east and west during the 20<sup>th</sup> century. Literally dozens of railroads large and small provided service throughout Ohio, Indiana, Illinois, Kentucky and the upper midwestern states, all service as links to the chain.

Between passenger and freight operations, the railroad were crucially important in the era before widespread air travel and interstate highways. This was especially true during the 1<sup>st</sup> & 2<sup>nd</sup> World Wars. Whether it was perishables like produce and livestock or raw commodities such as coal and ore, everything from store goods to Studebakers came from this region. Since so many models of these trains remain popular, icons of streamlining and strength, it is planned to have excellent Midwestern representations in operation by volunteers on the museum's 24x44 foot HO scale layout. The Carter Railroad Museum is open on Saturdays from 10:00 AM to 3:00 PM, and includes model railroad layouts, a special child's activity room, and ongoing programs. There is no admission fee but donations are welcome for its upkeep. The museum is also seeking artifacts for display, including the newest addition dedicated to the long-defunct, but well-remembered 'Tweetsie' line, the East

In addition to the displays, there is also a growing research library, and an oral history archive being established as part of the museum's programs. Info can be found online at '<http://etsu.edu/railroad/>' or '<http://johnsonsdepot.com/>' or '<http://www.stateoffranklin.net/johnsons/glcarter/cartermuseum.html>'

Members of the George L. Carter Chapter of the National Railway Historical Society and the Mountain Empire Model Railroaders (MEMRR) club coordinate the exhibits. Visit '[www.memrr.org](http://www.memrr.org)' to learn more about MEMRR, or visit '<http://glcarternrhs.com/>' to learn more about Carter Chapter, which helps demonstrate and maintain the model layouts, museum exhibits and other projects.

Membership opportunities are available to adults, and include special benefits and model railroading enjoyment.

The museum can be identified by a flashing railroad crossing signal at the back entrance to the Campus Center Building. Visitors should enter ETSU's campus from State of Franklin Road (at green light) onto Jack Vest Drive and continue east to North Dossett Drive (then left) to John Roberts Bell Drive at end, then right then left on Ross Drive(176) to end, adjacent to the flashing RR crossing sign.

*\*For more information about Heritage Day,  
contact Fred Alsop at 423-439-6838 or alsopf@etsu.edu*

*\*For disability accommodations, call the  
ETSU Office of Disability Services at 423-439-8346*