

**Mountain Empire Model Railroaders Club &
George L Carter Chapter of NRHS Newsletter**

THE SIGNAL BRIDGE

AND

THE COAL ROAD

Volume 28 – Issue 11 November 2021

Cover photograph of Norfolk & Western 611 by Paul Haynes

Club News

Inside this issue:

Club News	1, 7-8, 10-15, 23
President's Msg	2 – 6
Lose Track of Time	9, 16
Meeting Minutes	24 - 25
Heritage Days	17 – 22
Club Information	26

HAPPY VETERANS DAY

TO ALL THOSE WHO SERVED

THANK YOU

The View from the Engineer's Side of the Cab & The Drawbar



HAPPY THANKSGIVING EVERYONE!!!! Most of the trees have lost their colorful fall leaves and some of our recent outside activities have involved getting them up from the lawn. Frosty mornings are more and more common and the switch back to standard time has put me longer in the darkness in the mornings. But the holiday season is upon us, and we are looking forward to meals and visits with family and friends that are much more normal than those occasions from a year ago. Have fun and enjoy the season, but please stay safe as the virus is still around. Get

well wishes are extended to any of our members and their families who need them. We wish you a speedy recovery and look forward to your company at forthcoming meetings and at the Carter Railroad Museum. For our new members, greetings and we look forward to getting to know you better. Welcome to the club and to the railroad museum.

Annual Christmas Party: We were unable to celebrate this traditional Railroad Museum event last year because of the pandemic in our midst and we have discussed the merits of trying to get together for this annual social event that is always so much fun for all of us, or to stay on the safer side and let one more holiday season go past because of the upward trend in COVID-19 infections we are seeing in our area. Even some of our members who are fully vaccinated have been infected. We also found that many of the traditional locations we have used in the past are not available to us this season for the same reasons, or they want to charge a considerable sum for the rent of their halls. At the risk of a chorus of "BAH Humbugs" I regret to inform our members that we will not be holding the Annual Christmas Party again this year. Please celebrate as safely as you can, and we shall look for the return of all our cherished social events in 2022.

Renewal of Our Memberships: November is the month that we open the renewal membership for all our members in the Mountain Empire Model Railroaders and the George L. Carter Chapter NRHS. Dues levels have remained the same for 2022 for each organization, including the national dues for the NRHS.

MEMRR members pay \$30 for an annual individual adult membership and \$6 additional dollars for each family member living in the same household (Additional levels of membership, including students, can be found on the MEMRR website). **MEMRR Dues need to be paid to the Treasurer, Mike Tarter, by the deadline of January 31, 2022.**

Carter Chapter members pay individual dues of \$50 (national) + \$10 (chapter) = \$60. Family dues are \$57 (national) + \$12 (chapter) = \$69. **Carter Chapter dues need to be paid to the Treasurer, John Dodge, by the deadline of January 31, 2022.**

PLEASE RENEW YOU DUES FOR 2022 AS SOON AS POSSIBLE SO WE CAN KEEP YOUR NEWSLETTER COMING AND YOU CAN CONTINUE TO ENJOY ALL THE PRIVILIGES OF YOUR MEMBERSHIP !!!

(continued on page 3)

The View from the Engineer's Side of the Cab & The Drawbar

(continued from page 2)

Heritage Day Event for November: We celebrate that most Appalachian of standard-gauge railroads in November; The Clinchfield Railroad. Founded by George L. Carter this coal-hauler was the quickest route through the mountains between the coalfields of Kentucky and surrounding areas to the Piedmont and Coastal Plain of North Carolina. Bring your steam and diesel locomotives and CRR rolling stock and let's display the Clinchfield enterprise that Mr. Carter founded in the railroad museum that is named in his honor at the university that he helped found in East Tennessee. **November 27 is Our Clinchfield RR Day!!!**

Christmas Train in the ETSU Administration Building: A call from the ETSU's Provost's Office requesting a train to run a circle around the presents under the big Christmas tree in Dossett Hall was answered by *Mike Tarter, Ron Green, Gary Emmert, and Fred* in mid-November. We gathered up the components for a G-Gauge "Santa" train, track, powerpack, and Santa himself, and made them ready for display. On Friday, November 17th we assembled them around the tree in the central foyer of the Administration Building and off it ran, round and round, to the delight of a lot of folks who were attracted to the trial run. On Monday evening, November 22, the University President, Brian Noland, kicked off the lighting of the university Christmas tree and lit up the campus buildings' exterior for the holidays. Our little Christmas train is a big hit, and many folks are complimenting us on it. If you have the opportunity, please go to the second floor of Dossett Hall during business hours Monday-Friday and check it out for yourself. One of our Carter RR Museum banners decorates the hall nearby lending notice of our museum and our small contribution to the joys of Christmas at ETSU.

Officer Elections: Every organization requires good leadership to keep it running smoothly with dedicated people who can be depended on to take on the responsibilities that regularly occur and must be handled. We have been extremely blessed with excellent leaders who do so many things, many of which go unnoticed, and unheralded, to carry out those responsibilities and improve our organizations. It is time to elect our officers in both organizations, the MEMRR and the Carter Chapter NRHS, for the coming 2022 year. A slate of officers has been presented to each club at their respective November meetings and a call for additional nominations has been made. I am very proud of the fine officers I have worked with during 2021 and we are most fortunate that most of them are willing to continue in their present positions for another year, if voted in. They each have done an outstanding job and I recommend that you vote for them to continue in each of their respective capacities for 2022, but as always, the floor is always open to anyone who wishes to run for any office, including the one I have held for many years. Ballots are being distributed to all members electronically (If you don't have email we can reach you with, just call me with your vote choices and I will honor your votes confidentially and be sure they are compiled with everyone else's. Please take the time to vote your support for your fellow members who are willing to serve you as your officers. **Deadline for casting your ballot is Friday, 10 December, 2021.**

(continued on page 4)

The View from the Engineer's Side of the Cab & The Drawbar

(continued from page 3)

Member of the Year and **Officer of the Year**: This has become a traditional way of honoring our members by a vote of the membership for outstanding service to the MEMRR, the Carter Chapter NRHS, and the Carter Railroad Museum. Who is it as each of you to think about their service to our hobby, our organizations and the museum who stands out as being so outstanding that you really look up to the person who is doing it, and doing it without any other reason other than they really have a passion for making things work, helping others out, and having fun with their hobby and their fellow members as they do it? Who is the person who comes first to your mind when you think these things about this past year? Who is that member you wish to honor? Who is the officer that you want to recognize? Cast your nomination for one person in each of these two categories on the ballot that has been circulated as part of the ballot to elect our 2022 officers. Each winner of their respective categories will be awarded a special plaque and an engraved nameplate will be placed on the Honors Plaque on the wall in the Alsop Gallery in the Carter Railroad Museum. **Please nominate one person in each of these two categories and let them know how much we all appreciate what they do for us with their kindness, expertise and commitment to us.**

Annual Big Train Show: *Roger Teinert*, Director of the Annual Big Train Show, conducted the second meeting of this important committee on Monday, November 15 via zoom and in-person. This committee is open to any interested members and will be meeting monthly to plan and execute the details for the Annual Big Train Show that we will hold on June 3-4, 2022, in the ETSU Mini-Dome. Lots of vendor interest has already been generated and a number of vendors have already purchased tables for the event that is becoming one of the largest train shows in the southeast. Watch for the next meeting announcement and plan to join us in the planning of this big hobby event.

2022 Carter RR Museum Calendars are Here: We have several hundred of our custom printed 2022 Calendars now available for discounted sale to our members. They have all the meeting events for the MEMRR and the Carter Chapter NRHS listed in them, the dates for the Annual Big Train Show, each of the Heritage Day Events for the coming year and much, much more. *Geoff Stunkard*, our Heritage Day Coordinator, and outstanding publicist, has done yeoman's work in creating this calendar and I think is the best one we have produced yet. Pick one up at the museum's sales table and I know you will want to purchase one or more for yourself. They make wonderful Christmas gifts and are an excellent way to promote your club and the Carter Railroad Museum. We send one to all of our Big Train Show potential vendors and provide them as gifts to prominent ETSU administrators. **Get your own Railroad Museum 2022 Calendar Now!!! Only \$5 for Members.**

Library Book Sales: We still have a good selection of duplicate railroad library books for sale with special discounts to members. Drop by the museum some Thursday afternoon/evening or on Saturdays when we are open and check out the great railroad books we have to offer. They will make good indoor reading on these cold winter days to come and will give you a lot of information about the trains and railroads you model or are interested in learning more about. **Come get your books before we pack them away for the June train show.**

(continued on page 5)

The View from the Engineer's Side of the Cab & The Drawbar

(continued from page 4)

Rail & Sail Excursion; a Big Success: The October 30th rail excursion on the 3-Rivers Rambler RR and *The Star of Knoxville* riverboat cruise hosted by the G.L. Carter Chapter NRHS and the G.L. Carter Railroad Museum was an outstanding success. We sold out 3 full busses (56-passenger each) and had some folks driving to meet us in Knoxville for the event. The 170 people attending had a great time despite the light rain that persisted most of the day. This is the first such public outreach event we have been able to hold since COVID-19 shut down such activities in March of 2020 and everyone was excited about the adventure of riding the train and dining on the paddlewheel boat on the Tennessee River. We made a profit for both the Carter Chapter and the Carter RR Museum and will plan several such excursions for 2022. If you missed this one, please plan to join us on one or more for next year. You will have a great time and you will help support the NRHS chapter and the museum.

Around the Railroad Museum: If you have not been to the Carter RR Museum lately you really need to find a Saturday, or a Thursday afternoon/evening, and come see for yourself the changes we have been making to most of the layouts. Here are some highlights:

MEMRR HO-Scale Layout: Individual modules continue to be upgraded with improvements being made to *Logan Heaton's* and to *Gary Gilliam's* modules. The club modules at both front gallery corners have a lot of logging scenery work being done on the mountain scape in view of the gallery entrance doors and the depot area with its working freight and specialty buildings is really taking shape on the opposite corner. Additional help and ideas are always welcome, and its not too late to lend a hand to either, or both, of these club module projects. There still remains a lot of modeling work to be done, but a lot of progress is being made by *Rick Mulholland*, *John Carter*, *Geoff Stunkard* and a few other members.

Bankus N-Scale Layout: *Mike Tarter*, *Jim Gorney*, and some other members continue to recontour some of the mountains and the scenery that will refresh them on this layout. New trees have been made by our "Tree Man" *Ken Harmon*, and some track work also continues.

ET&WNC "Tweetsie": The current focus is on the creation of the town of Elk Park, NC as more and more buildings are being constructed to scale representing those that were present in circa 1925. The front street is now completed with the exception of the landscaping as I (*Fred*) continue to put together the building form scale drawings I made of each structure from photographs. The drawings then go to *Bill Smith* for conversion into CAD drawings that will be the guiding software that *Ben Merritt* will use to cut out the pieces of wood and plastic on our laser knife that I will, in turn, use to create the miniature buildings for the town. It takes a village to create a village.

Library: *Dean Small* and *Wallace Shealy* are continuing to work new books into our growing railroad library and cataloging them as they go. We have more than 2,400 volumes on the shelves and members are welcome to read them in our library or to check them out and take them home to study and enjoy.

Come Visit the G.L. Carter Railroad Museum: This holiday season is a wonderful time to bring some of your friends and/or family to the Carter Railroad Museum to see what is happening here for yourself, especially if you have not been here for a while. We are social distancing, wearing masks, and checking everyone's temperature at the door. We have masks on hand if you forget to bring yours and we are trying to be as safe as we can be while also following the university's mandated guidelines for covid safety. Come see us and help us bring the excitement of our little railroad museum to others.

(continued on page 6)

The View from the Engineer's Side of the Cab & The Drawbar

(continued from page 4)

Have a great Thanksgiving! Great things are happening at the Carter RR Museum and we are looking forward as we plan with the MEMRR and the Carter Chapter NRHS for the new year and wishing for a more normal one as well with more socializing, more attendance at club meetings, and seeing more members on a regular basis. Listen to the sound of the whistle of the train in the night and dream of all the destinations yet to come.

Fred J. Alsop III

Director, George L. Carter Railroad Museum, ETSU

President, Mountain Empire Model Railroaders

President, George L. Carter Chapter NRHS



Club News

Museum Update: Article and Photographs by Logan Heaton

Recently we had an interesting donation to the museum in relation to one of our local railroads, the Norfolk and Western Railroad. Two well kept buttons that came off a brakeman's cap belonging to the N&W were brought to us and placed on display with our other railroad caps in the main hall. Although not much info on what happened to the cap itself these are still some great pieces of railroad history and we are happy to display them for all to see. Stay tuned for more updates coming soon!!



Club News

MEMRR Layout Update: Article and Photographs by Logan Heaton

We have a loop.. kinda. Ok so not a completely connected loop but some great progress still on the logging loop with the track work slowly taking shape. Museum member Rick Mulholland is currently seen connecting some of the pieces of track that are ready, also nailing them down in place to the cork road-bed. Although not fully connected yet it does give a preview of what is to come. Stay tuned for more !



Happy Thanksgiving!

Stop looking at me like that.



**Your Membership to the
MEMRR and Carter Chapter of NRHS
Is About to Expire!!**



Don't be the last car on the train...Renew Today!

MEMRR member dues:

\$30 00 Full Membership + \$6 for each additional family member

\$18 Student; \$12 Youth; \$12 Distant Remote

***Dues Need to be paid to Mike Tarter, Treasurer**

or mailed to

**MEMRR, P.O. Box 70697, East Tennessee State University
Johnson City, TN 37614**

Carter Chapter of NRHS member dues:

\$60 - Individual (\$50 national + \$10 chapter)

\$69 – Family (\$57 national + \$12 chapter)

***Dues Need to be paid to Treasurer, John Dodge**

Annual dues are required by January 31st, 2022

New Members for November 2021!

Please make our new members feel welcome!

No new members this month!

We would love to know more about you!

If you would like to share your story with fellow club members in a future newsletter, please send via email to our editor at cathysmithmemrr@yahoo.com.



Club News

Tweetsie Layout Update Elk Park : Article and photographs by Logan Heaton

The General Blacksmith Shop in Elk Park has been completed!! With the roof now secure in place the building underwent some additional weathering adding some age to the structure before being placed on the layout at the edge of town. Currently some interior pieces are in the works but some pieces are just about ready for a scene that will be on the outside including a wagon and a horse getting new shoes. This will be another great addition to Elk Park as this area continues to grow and progress. Stay tuned for more updates and videos coming soon!!



Club News

Tweetsie Overall Layout Update : Article and photographs by Logan Heaton



A quick update on some new additions and adjustments to the layout that although not like the progress to the towns and scenery are still some great changes to the overall layout. Starting at one end of the layout in Elizabethton that overlooked the coal chute was once broken up at the viewing area by wooden frames to help hold the plexiglass in place. Although this did the job at the time it broke up the view too much so to fix this a new piece of plexiglass has been made for one seamless viewing area to see this beautiful scene. On the other end of the layout in the developing area for Elk Park the second camera has now been installed adding another unique view to see on our display especially when trains pass by that would normally not be seen with the current set up of the layout. Now admittedly like the first camera this one also sticks out a bit but don't

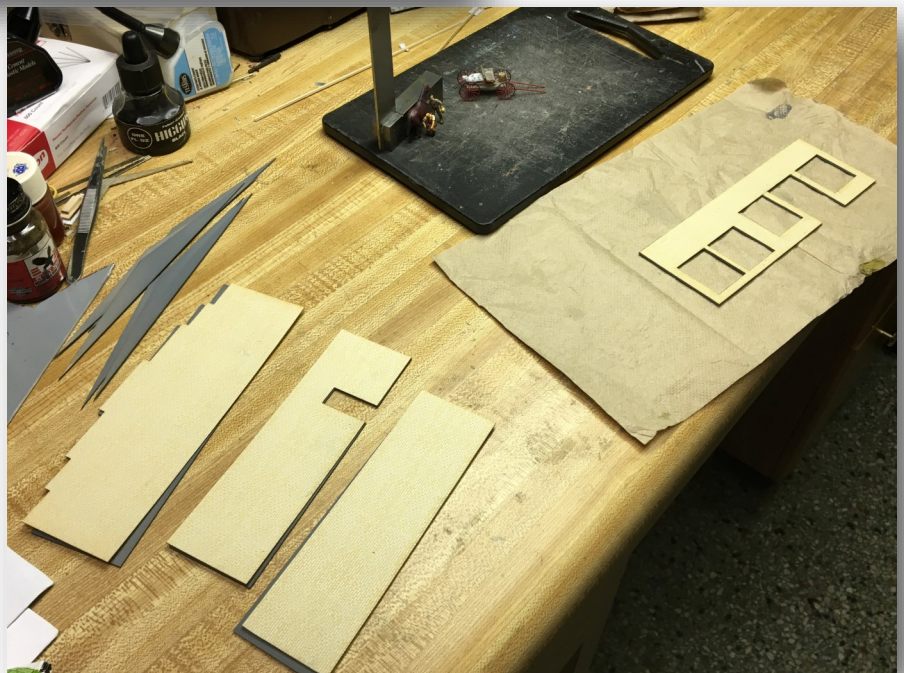
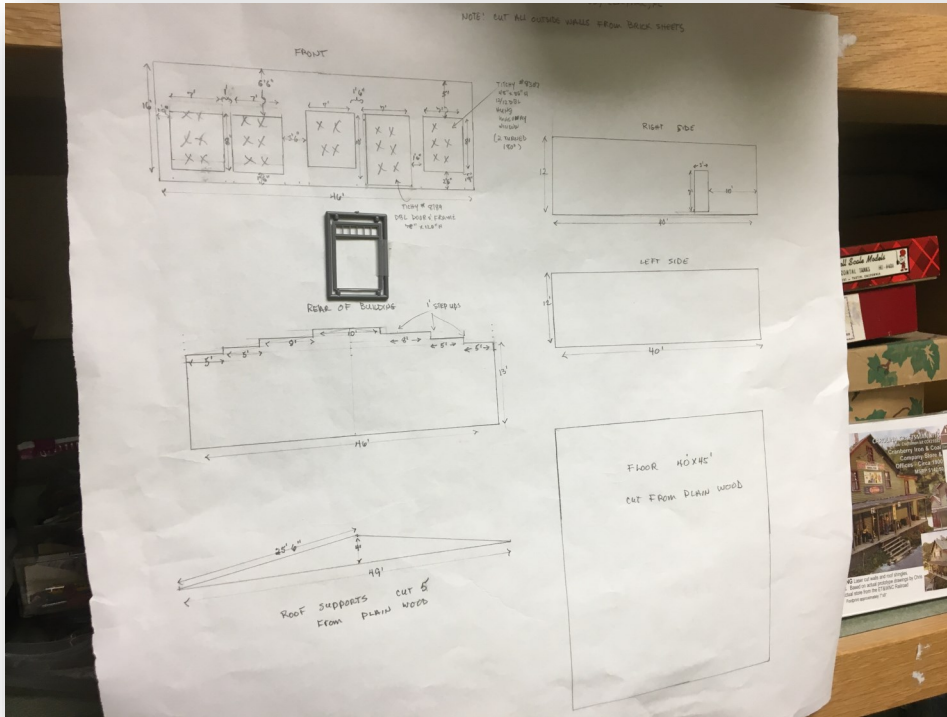
worry as plans are in place that as Elk Park develops the cameras will also be hidden by scenery such as either by well placed trees and other foliage or if a building is in or near the area could also be a possibility to hide the cameras without obstructing the views on the display. Stay tuned for more updates coming soon!!



Club News

Tweetsie Layout Update Elk Park : Article and Photos by Logan Heaton

With the blacksmith shop now completed the nest building is on the workbench which will be the J.M. Dearmin Coal and Ice Company. While waiting on some of the remaining pieces for the blacksmith interior work has already begun on preparing the building. Currently the pieces for the walls and roof structure have been cut and primed along with the pieces to go over the wood for the brick work as the building is prepared for assembly. Stay tuned for more updates!!



Club News

Tweetsie Layout Update Elk Park : Article and Photos by Logan Heaton

The J.M. Deamin Coal and Ice Company is really starting to shape up to the original. Although still in pieces the work done by museum director, Dr. Fred Alsop with the brick work along with doors, windows and signage added to the building really helps to bring it together especially when compared to a photo of the original building that stood in Elk Park. Stay tuned for more updates coming soon!!



Lose Track of Time!

Happy Halloween ! - Photos by Logan Heaton



Heritage Days!

Southeast, Land of Sunshine – Article and Photos by Logan Heaton

With all the excitement in and around the museum this past weekend it was certainly a great time to cap off the Halloween season. We were also able to capture some great images around the layouts that took place during our Southeast, Land of Sunshine Heritage Day event that we hope you all enjoy!!



(continued on page 13)

Heritage Days!

Southeast, Land of Sunshine – Article and Photos by Logan Heaton

(continued from page 12)



(continued on page 14)

Heritage Days!

Southeast, Land of Sunshine – Article and Photos by Logan Heaton

(continued from page 13)



(continued on page 15)

Heritage Days!

Southeast, Land of Sunshine – Article and Photos by Logan Heaton

(continued from page 14)



(continued on page 16)

Heritage Days!

Southeast, Land of Sunshine – Article and Photos by Logan Heaton

(continued from page 15)



(continued on page 17)

Heritage Days!

Southeast, Land of Sunshine – Article and Photos by Logan Heaton

(continued from page 16)



**Sending gratitude and love to everyone who
has served our great Country
in all branches of the
Armed Forces!**

**ON NOVEMBER 11TH AT 11:00
AM LOCAL TIME**

**EVERY TRAIN ON THE CPR SYSTEM IN THE US
AND CANADA COMES TO A STOP AND
OBSERVES A MINUTE OF SILENCE FOLLOWED BY
1 LONG WHISTLE BLAST IN MEMORY OF THOSE
WHO SERVED IN THE MILITARY**

Club News

MEMRR And George L. Carter Chapter of NRHS Monthly Business Meeting-October 2021

Meeting called to order at 6:40 PM by Vice President John Carter

Members Present (or on Zoom call): Logan Heaton, Mike Tarter, Roger Teinert, Robert Sullivan, Rick Mulholland, Wallace Shealy, John Carter, Frank Fezzie

After initial remarks, John called for Officer Reports.

Secretary's report: The club Secretary, Mike Tarter, noted that the September 21 meeting minutes were included in the September Signal Bridge and Coal Road. Wallace Shealey motioned to accept the September minutes as published; this was seconded by Logan, and approved unanimously. Any corrections or additions to the meeting notes are always invited – please discuss any during our next business meeting.

Treasurers' report: Mike Tarter (assistant to the Treasurer, Gary Emmert) gave us an update on some recent deposits and payments, and has available a interim financial report for October. Some members have paid dues for 2022 membership, and all members are encouraged to do so soon. Executive summary - The MEMRR has money and is financially solvent.

Newsletter Editor: the September Signal Bridge and Coal Road was sent out on Oct. 1st.

Webmaster reports, Ben and Bill are not in the meeting. Logan reports the website is up and current, including the upcoming excursion. He notes that videos linked on our website are being noticed.

V.P. report, John Carter: John informs us that he has nothing exceptional to report. He informs us the layout coordinators meeting was held on 10-14 and will be included in the Oct. Signal Bridge. Next meeting will be Nov. 18th.

Membership report, Robert Sullivan: no update.

Presidents report:

Fred is out of the area on travel, not in the meeting.

Old Business:

Frank Fezzie reported progress on the HO and Tweetsie layouts; plans for the passenger station on the HO layout are being developed by Geoff Stunkard. The logging module is being worked on by Rick Mulholland, with the addition of the upper level of track. The Tweetsie has had a second video camera and display added.

John reports the 'Rail and Sail' excursion is sold out, with 3 buses going.

Wallace and John remind us the 'Book Sale' is still open, and ETSU will soon begin cataloging items in our library.

Annual Election- John invites members to volunteer for the 2022 Nominating Committee.

(continued on page 19)

Club News

MEMRR And George L. Carter Chapter of NRHS Monthly Business Meeting-October 2021

(continued from page 18)

New Business:

Roger Teinert reports planning for The Big Train Show for June 2022 is ongoing, with a meeting held on October 18th. We are staying in contact with various vendors, vendor forms are going out. Ads are being posted in various magazines and newsletters.

Annual Christmas party- Per Fred, cancelled for this year.

Annual HOn3 publication- the Tweetsie is again honored to be featured in the annual, with 7 pages of coverage. Extra copies of the Annual are on order and will be available for \$20 each.

Heritage Day- The weekend of the 30th is Heritage Day – this days emphasis is on Southeast railroads.

Little Engineers Room- Amy is looking at Trick or Treat stations and Halloween costumes on the 30th.

The meeting was adjourned at 7:10, and turned over to Logan for a prepared program.

Next Meeting is November 16th in ETSU Brown Hall room 223.

Respectfully submitted,

Mike Tarter, Secretary

**Mountain Empire Model
Railroaders Club**

Location:



George L. Carter Railroad Museum
East Tennessee State University

Business Meetings

Held monthly on the
3rd Tuesday at 6:30pm.

*

Weekly Work Nights

Thursdays from 4pm until ?

MEMRR Club Officers

- **Club President & Director of George L Carter Railroad Museum, ETSU:** Fred Alsop
alsopf@mail.etsu.edu
- **Vice President:** John Carter
carterjohn92@gmail.com
- **Treasurer:** Gary Emmert
jbox1015@comcast.net
- **Secretary:** Mike Tarter
miketarter06@gmail.com
- **Webmasters:**
Logan Heaton
Ben Merritt
Bill Smith
memrrwebmaster@gmail.com
- **Newsletter Editor:**
Cathy Smith

George L. Carter

Chapter NRHS Officers:

- **President:** Dr. Fred J. Alsop
- **Vice Pres:** Roger Teinert
- **Secretary:** Mike Tarter
- **Treasurer:** John W. Dodge,
econguy2000@hotmail.com
- **Historian:** Carolyn Greg
- **National Representative to the NRHS:** Charlotte Pahriss

George L Carter Railroad Museum and MEMMR

The many colorful multiple railroads of the Midwest are featured at the George L. Carter Railroad Museum, located in the Campus Center Building of East Tennessee State University. The region encompassing Chicago, Detroit, Louisville, Milwaukee and St. Louis was the true epicenter of American commerce between east and west during the 20th century. Literally dozens of railroads large and small provided service throughout Ohio, Indiana, Illinois, Kentucky and the upper midwestern states, all service as links to the chain.

Between passenger and freight operations, the railroad were crucially important in the era before widespread air travel and interstate highways. This was especially true during the 1st & 2nd World Wars. Whether it was perishables like produce and livestock or raw commodities such as coal and ore, everything from store goods to Studebakers came from this region. Since so many models of these trains remain popular, icons of streamlining and strength, it is planned to have excellent Midwestern representations in operation by volunteers on the museum's 24x44 foot HO scale layout. The Carter Railroad Museum is open on Saturdays from 10:00 AM to 3:00 PM, and includes model railroad layouts, a special child's activity room, and ongoing programs. There is no admission fee but donations are welcome for its upkeep. The museum is also seeking artifacts for display, including the newest addition dedicated to the long-defunct, but well-remembered 'Tweetsie' line, the East

In addition to the displays, there is also a growing research library, and an oral history archive being established as part of the museum's programs. Info can be found online at '<http://etsu.edu/railroad/>' or '<http://johnsonsdspot.com/>' or '<http://www.stateoffranklin.net/johnsons/glcarter/cartermuseum.html>'

Members of the George L. Carter Chapter of the National Railway Historical Society and the Mountain Empire Model Railroaders (MEMRR) club coordinate the exhibits. Visit 'www.memrr.org' to learn more about MEMRR, or visit '<http://glcarternrhs.com/>' to learn more about Carter Chapter, which helps demonstrate and maintain the model layouts, museum exhibits and other projects.

Membership opportunities are available to adults, and include special benefits and model railroading enjoyment.

The museum can be identified by a flashing railroad crossing signal at the back entrance to the Campus Center Building. Visitors should enter ETSU's campus from State of Franklin Road (at green light) onto Jack Vest Drive and continue east to North Dossett Drive (then left) to John Roberts Bell Drive at end, then right then left on Ross Drive(176) to end, adjacent to the flashing RR crossing sign.

**For more information about Heritage Day,
contact Fred Alsop at 423-439-6858 or asopf@mail.etsu.edu.*

**For disability accommodations, call the
ETSU Office of Disability Services at 423-439-8346*