

**Mountain Empire Model Railroaders Club &
George L Carter Chapter of NRHS Newsletter**

THE SIGNAL BRIDGE

AND

THE COAL ROAD

Volume 28 – Issue 8 August 2021

Cover photograph of Norfolk & Western 611 by Paul Haynes

Lose Track of Time!

Inside this issue:

Club News	6-18, 20-22, 27 -28
President's Msg	2-5
Lose Track of Time	1, 19
Meeting Minutes	29-30
Heritage Days	23-26
Club Information	31



The View from the Engineer's Side of the Cab & The Drawbar



It is late summer and students young and old are going back to school, the weather's temperatures are very warm, and these normal things for this time of year in East Tennessee are overshadowed by the Delta Variant of COVID-19. We are all back to wearing masks to protect ourselves and others indoors, hoping everyone will get vaccinated to help curb the spread of this deadly virus, and that there is a silver lining somewhere on the horizon. Our G.L. Carter Railroad Museum remains open to the public and our visitors continue to come in good numbers on Saturdays.

We are operating under the university's mandate of wearing our masks, even if we are fully vaccinated, in the museum and providing masks for those who don't have them as they enter the museum. We have had only a few visitors refuse to wear masks and they have decided not to enter the building, rather that take our offered free masks for them to wear rather that come inside. The vaccines work, the science behind them is real, they are free to us at no cost, and they are the best tool that we have to fight this pandemic. *Please do your part and get vaccinated!*

New Members: We welcome all of our new members to our clubs and to the Carter Railroad Museum. Please give Membership Chairman, *Robert Sullivan*, some background information about yourself and your railroad modeling interests, and he will provide some of that information to our Newsletter Editor so we can all get to know you a little better.

Sick Bay: Please send your best wishes to several of our members who are ailing and/or recovering from recent surgeries. The list includes (but may not be complete): *Justine Lyons*, son of *Lisa Lyons* and *John Carter*, *Mike* and *Pam Buster*, *Gregg Mundkowsky*, *Charlotte* and *Jim Pahr*, *Catherine Shealy*, *Paul Haynes* (shoulder surgery), and *Catherine Cummins* (knee replacement surgery). We wish you all a speedy and full recovery and look forward to seeing you back with us soon.

Club Meetings: We continued our hybrid club meetings in August having in-person and simultaneous zoom attendance. We will continue to do so for some time in the future. We did have some communication failures with the zoom segment of the Monday meeting for the G.L. Carter Chapter as the zoom feature was not available for that meeting, and this problem carried over somewhat for the Mountain Empire Model Railroaders meeting the following night when I mistakenly opened the zoom invitation for the Carter Chapter meeting instead of the one for the MEMRR. My apologies to any of our MEMRR members who could not connect with us for that August meeting via zoom. We only had 5 members in person for each of the two club meetings and I hope we can get a more robust turnout for future meetings as it is important to have in-person discussions on items that may be brought forward as motions for votes by the membership. Our zoom capabilities do allow us to meet from the comfort of our homes, and from other places, some quite distant. Former *The Signal Bridge* editor, *Ted Bleck-Doran* joined the recent August meeting via zoom from his northeast Florida home.

(continued on page 3)

The View from the Engineer's Side of the Cab & The Drawbar

(continued from page 2)

Emeritus Membership: At the August meeting a motion was made and seconded to bestow Emeritus status on 4 of our MEMRR members based on their long-standing memberships and their most valued contributions to the club and to the railroad museum. Please welcome our latest Emeritus Members, *Charlene* and *Dan McLeod*, now living in Rogersville, TN, and to *Barbara* and *Bill Beagen*, living in Jonesborough, TN. Emeritus members pay no membership dues, but continue to receive the clubs' newsletter, have unlimited access to the Carter Railroad Museum, but no longer have voting privileges nor can hold offices in the clubs. Congratulations to Charlene, Dan, Barbara and Bill!! Please accept this new membership status as a small token of the appreciation your fellow members feel for your services and your friendship.

Book Sale: Our new Librarian, *Dean Small*, and with outstanding help from *Wallace Shealy*, have now reached the stage in the reorganization of the Carter RR Museum Library that they have been able to identify a large number of duplicate volumes of railroad books that the museum does not need to keep in its collection. It is now more important to have the shelf space they would otherwise occupy than to have them remain in the collection. Therefore, **IT IS TIME FOR A MAJOR BOOK SALE!!!** The plans are for the initial sales to be held on Thursday afternoon/evening (work-day time) August 26 and Saturday, August 28. This first pick sale is for members to be able to choose the books you want for your personal library. All books have been priced using available pricing standards for these additions and all books are clearly priced with green stickers on their spines. Carter Chapter and MEMRR members will receive a **10% discount** automatically from the sticker price. If you are a member of **both** clubs, you will enjoy a **15% discount**. Additional discounts may be afforded if you buy several books at the same time. All proceeds from the sales will go to the Carter Railroad Museum. **COME TO THE SALES AND SELECT THE VOLUMES YOU WANT; THE 'EARLY BIRDS' WILL GET THE BEST SELECTIONS.** I want to thank Dean Small, Wallace Shealy, and former Librarian, Gary Emmert, and others for all the work they have been putting into our museum library over the summer to get it into the excellent condition it currently enjoys and for making it a much more accessible functioning asset for the museum and for our members.

Important Visitors Coming August 31st: The National Narrow-Gauge Convention is being held in Hickory, NC, September 1-4 with lots of workshops, clinics, vendors, programs on model railroading and more. You can check out the convention details at 41nngc.org. Their convention also offers opportunities for their attendees to visit local private model railroad layouts in people's homes as well as area railroad museums. Many of these visits will occur each afternoon of the convention when there is an open block of time for their participants from noon to 6 PM to travel on their own to visit these sites. Our Carter RR Museum is listed as one of those locations to visit. So, it is possible that we may have some folks making the drive from Hickory to ETSU to visit us any of those afternoons. It is a 2-hour drive for them, so if any come on Wed, Thurs, or Friday I would not expect them to arrive before 2 p.m. **Pre-convention, on August 31st, there are two busloads of conventioners who will be touring the former ET&WNC RR right-of-way and they will be ending their tour at our Carter RR Museum to see the largest model of this narrow-gauge railroad in existence.** The buses will be staggered one hour apart. They will leave Hickory, NC from the convention hotel at 8 AM and 9 AM. They will follow the former line to Newland, NC to tour the relocated and refurbished Linville Depot and the 505 "Tweetsie" caboose. They will then travel to Doe River Gorge

(continued on page 4)

The View from the Engineer's Side of the Cab & The Drawbar

(continued from page 3)

to have lunch and ride the rails up to Pardee Point. When they reboard their buses, they will be coming to Johnson City, TN with their final stop being a tour of the Carter Railroad Museum. I expect them to begin arriving around 2:00 PM. **If you can come to the Carter RR Museum by 2 p.m. on Tuesday, 31 Aug., to help us show our visitors all of our model railroad layouts you are most urgently encouraged to do so. These are modelers from across North America and they are coming to see us. Please help me show them our hospitality and our museum.**

Key Box Code Change: Due to security reasons we have had to change the Key Box Code on the outside entrance door to the Carter Railroad Museum. All current members have been supplied the new code electronically. **To keep the museum secure we ask that you do not share this code with any member!** Remember, all current valid members now have the code. No one needs to get the new code from you. Thank you for your cooperation in this request.

October 30th Rail/Boat Excursion: The G.L. Carter Chapter NRHS and the G.L. Carter Railroad Museum are offering the first rail excursion to members and the public since COVID-19 shut everything down in March of 2020. One of the favorite rides in the early summer in the past has been in Knoxville, TN where we ride the rails on the 3-Rivers Rambler and then board *The Star of Knoxville*, a paddlewheel boat for a luncheon cruise on the Tennessee River. Transportation is via Premier Transportation Motor Coach round trip from ETSU. Cost for all the transportation and the meal on the river is \$95 for adults and \$85 for children 12 and under. Information and ticket applications are available at the sales desk at the Carter Railroad or you can go on line to memrr.org and click on "**excursions**" on the right side of the page and download all the information and applications you need. Any profits from these join co-sponsored rail trips are shared by the Carter Chapter NRHS and the Carter RR Museum. The Carter Chapter NRHS uses some of these funds to sponsor high school students to the National NRHS RailCamp in Dover, Delaware each summer. Several of our younger MEMRR members have been selected and sponsored to this camp in the past and we will continue to give eligible youth members first choice on available RailCamps in the future. ***Please sign up and join us on this fun railroad/boating outing in October and in so doing, support the Carter Chapter NRHS and the Carter RR Museum.*** If the trip is cancelled due to COVID restrictions to our safety, all monies for the trip will be refunded.

Around the Carter RR Museum:

*ETSU began its Fall Semester on August 24th. Parking will be more limited by the significantly increased number of vehicles on campus in addition to the fenced off staging area in the adjacent parking lot for the remodeling of Lamb Hall. Be careful driving on campus and park only in legal parking spaces!

*New volunteer parking pass cards are now available for you in the RR Museum. Please fill out the brief paperwork and get your parking pass. Please only one per volunteer (not one per vehicle as you can transfer them from car to car). Remember to display it when you park on campus on the dashboard on the driver's side of the vehicle.

(continued on page 5)

The View from the Engineer's Side of the Cab & The Drawbar

(continued from page 4)

*Work continues on the MEMRR HO-scale layout, on the N-Scale Bankus Layout, and the Hon3 ET&WNC layouts under the capable hands of our talented model railroaders. Thanks to the layout coordinators and the groups who have planned and are executing these improvements and changes all of our operating layouts are looking and operating better and better. Please lend your talents, your time, and your comradery to the continued shared experience of model railroading.

*The museum library is open to members on a somewhat limited basis currently as work on the contents continues. Please be patient but continue to check on Saturdays and on Thursday afternoons and evenings when a librarian is available to help you select volumes you want to check out, or to check in volumes you have on loan.

Heritage Day Event: Saturday, August 28th is our next Heritage Day Event. We are featuring railroads of the West. So, bring your locomotive and rolling stock and let's go west young man!! Steam and diesel are both wanted, especially some of the big articulated steam locomotives so please run your Big Boys and Cab Forwards as well as the slicker streamlined locomotives for this event. We are promoting it with press releases, and we expect a good turnout.

Thank you for all you do for our clubs and for the Carter Railroad Museum. Your efforts have put our little railroad museum on the national and international map for model railroaders. We are a destination for more than 100 modelers from across North America this month. Great work everyone! Continue to enjoy the hobby. Continue to dream-plan-build! Listen to the sound of the whistle of the train in the night and dream of all the destinations yet to come.

Fred J. Alsop III

Director, George L. Carter Railroad Museum, ETSU

President, Mountain Empire Model Railroaders

President, George L. Carter Chapter NRHS

Club News

MEMRR Layout Update: Article & Photographs by Logan Heaton

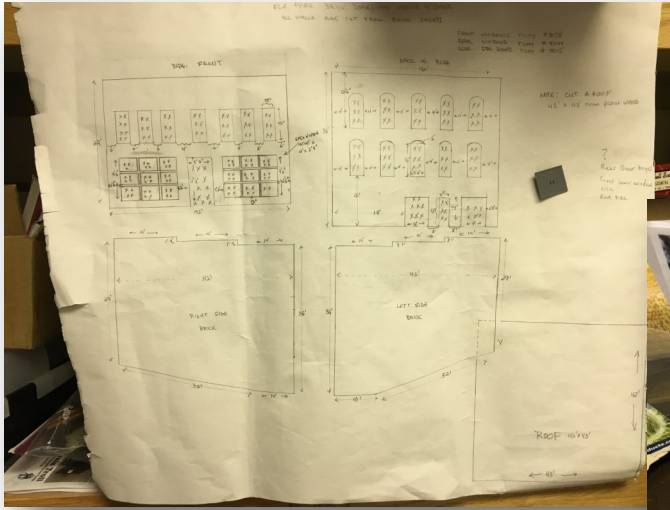
Work continues on the module expansion with the framework now covered up and new wood being put in and the start of the new scenery with the hill being sculpted to match the existing scenery. Plans are still being considered for the finer details of but the general design of this new expansion has been approved and we will keep you all up to date as this area continues to develop.



Club News

Tweetsie Layout Update Elk Park Boarding House: Article & Photos by Logan Heaton

Progress continues on Elk Park with the next building now up for assembly which is the old brick boarding house and shops that would have sat next to the bank behind the station. Currently museum director Dr. Fred Alsop is preparing the walls for the structure with part of one wall being made a bit thicker to match that of the original building before it linked with the shared wall with the bank. Stay tuned for more updates!



Club News

(continued from page 7)

Work continues on the boarding house in Elk Park with the building fully painted and weather including the roof. You may also notice some scorching on one side of the building which is where the building that once neighbored the boarding house burnt to the ground though the buildings on each side survived the blaze. Currently museum director Dr. Fred Alsop is in the process of adding the caps to the roof along with putting on the awnings for the shop windows on the lower level. Stay tuned for more updates!



Club News

Tweetsie Layout Update Elk Park Elk Park Burnt Building and Viewing Area:

Article & Photos by Logan Heaton

While work continues on the next building the Elk Park section itself is shaping up nicely. The burnt out foundation has been finished and installed on the layout showing the remnants of what is left from burnt out floors and walls to a collapsed chimney all resting on what is left of the foundation. The viewing area is also coming along nicely with the camera now installed looking over the town and towards State Line Hill and hooked into the monitor. Now the monitor pictured will not be the one our visitors will be viewing from as we have plans for a different one to be installed into the panel. Plans are also in place for a second camera to be installed which will cycle between the two cameras to show different views of the town and of the trains when they pass on the monitor. Stay tuned for more updates!



Club News

Tweetsie Layout Update – Hampton: Article and Photographs by Logan Heaton

While work continues on Elk Park work is also being done over in Hampton both fixing up the area and also preparing for the natural tower. Some scenery has already been started with some of the ground around the station and track being built up with grass and dirt being applied. Along the hillside rock work has also been started around the hole where the water tank will go. Part of the rock work near the top and down on the ground has also been cut for the stream which also flows under the track. This area will continue to develop along with our other projects on the layout and we will be sure to keep you all up to date as work continues. Stay tuned!



Club News

New Members for 2021!

Please make our new members feel welcome!

No new members this month!

We would love to know more about you!

If you would like to share your story with fellow club members in a future newsletter, please send via email to our editor at cathysmithmemrr@yahoo.com.



Club News

MEMRR Layout Update– N Scale Layout Update Cherokee Ridge: Article & photos by Logan Heaton

Tremendous progress has been made by the team on the major overhaul effort for the N scale layout with the area known as Cherokee Ridge being completed after being cleaned up and breathing new life into the area with new scenery including new trees and rock work along with other foliage. The town and small lumber mill has also been cleaned up and put back in place. Even new residents have been added including some excited rock climbers. While this area is finished the next project is shaping up on the hill outside the city and main yard with all the old buildings, scenery and vehicles being cleared off to start again with a clean slate. Stay tuned for more updates!



Club News

MEMRR Layout Update: Article and photographs by Logan Heaton

A quick follow up on the progress with our corner module coming into the main hall as both above and below steady progress being made with both the new extension and the future logging site now being sanded and smoothed out and painted with primer to get ready for future work. Currently the buildings for the logging area are being built for the small camp in the mountains while plans are starting to take place on the expansion with ideas being proposed for a new switch back to handle more cars on an easier grade. Stay tuned for more updates!



Club News

Wreck It Wednesday! : Article and photographs by Logan Heaton

Even on a Heritage Day accidents can happen. Good thing the wreck train was passing by.



Club News

Wreck It Wednesday! : Article and photographs by Logan Heaton

Just like a normal railroad or even your car you gotta be careful and make sure everything is set correctly including the brakes. This here shows what happens when a leaky brake or a brake not fully applied resulted in one of the steamers creeping forward and running into the boxcars getting a closer look of sorts at the train. Luckily the train was stopped before it continued to push the cars off the track.



Club News

Tweetsie Layout Update–Elk Park Boarding House: Article and photographs by Logan Heaton

The Elk Park Boarding House has been completed!! With the final touches and weathering completed the building was added to the row behind the station completing this section of the town with the bank and store. Part of some additional work started also includes the start on the sidewalk that connects the buildings and that will follow the street. With this completion we are that much closer on the progress with Elk Park. Stay tuned for more updates!



Club News

Wreck It Wednesday: Article and photographs by Logan Heaton

Don't know who is more shocked, the people on board or the coaches?



Club News

Tweetsie Layout Update: Article and photographs by Logan Heaton

With the boarding house complete for Elk Park two more parts of the project begin starting right next to the boarding house where the remains of the prior building's foundation is put in. At the time period the layout takes place the building that once neighbored the boarding house actually burnt down leaving only the foundation as seen here where Dr. Alsop cuts out a space where it will sit. Along with this some of the remaining sidewalk has been put in leading up to the town and connecting up with what was previously installed giving idea of how this will also go with the road. Stay tuned for more updates!



Lose Track of Time!

Article and photographs contributed by Jaykob Stephens

The Ford Motor Company produced their very popular L-Series of heavy trucks from 1970 to 1997 with few design changes. Over the years, these trucks proved to be nearly infamous among dump truck builders. For my latest project, I decided to capture the look of a typical Ford dump truck in 1/87 (HO) scale. I began with a Promotex Ford Aeromax tractor and 36-foot dump trailer. I shortened the bed of the trailer to fit the frame of the truck, built my own cab guard, and repurposed a dump mechanism from another truck. The truck received a custom styrene visor, bug shield, lift axle, CB antennas, pintle hitch, painted details, and many miscellaneous parts from aftermarket companies and my parts box. I finished the build with chrome wheels, real rubber tires, and a 3D printed tag trailer from my friend, Dana Stratton. It features a custom ramp system designed by me and a modified Norscot Caterpillar dozer. I estimate I have over 50 man-hours invested in the truck and trailer. The modeling era of this combination would be about 1990 onward.



Club News

Tweetsie Layout Update Hampton Water Tank: Article and Photos by Logan Heaton

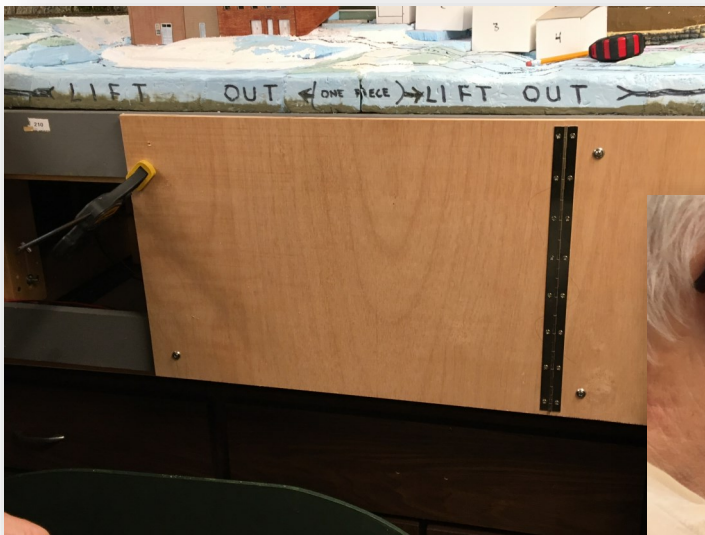
Things are really shaping up over in Hampton where landscaping for the natural spring water tank has now been installed. While work continues on Elk Park this unique piece of the ET&WNC was put in with a lot of the rock work and molding complete with the next step being to merge it with the rest of the layout along with the remaining detailing and landscaping to put in. Once complete this will represent how the natural spring was used to fill the tank and keep water for the steam engines before going into Doe River Gorge or back to Elizabethton and Johnson City. Stay tuned for more updates!



Club News

Tweetsie Layout Update Elk Park Viewing Area – Article and Photos by Logan Heaton

An interesting new addition is coming to the layout over at Elk Park. With everything going on many have noticed that unlike other areas of the layout most of the main town of Elk Park that we have the current room to model faces away from our visitors so things like the store fronts and station are not able to be clearly viewed. With that in mind things are in motion to where a small camera will face the town giving visitors a unique view at the town especially when the trains pass by. Currently the hole has been drilled out for the camera and the panel that will house the monitor has also been put in making it to where it can be removable if need to access it or any of the other layout components for maintenance. Stay tuned for more updates!

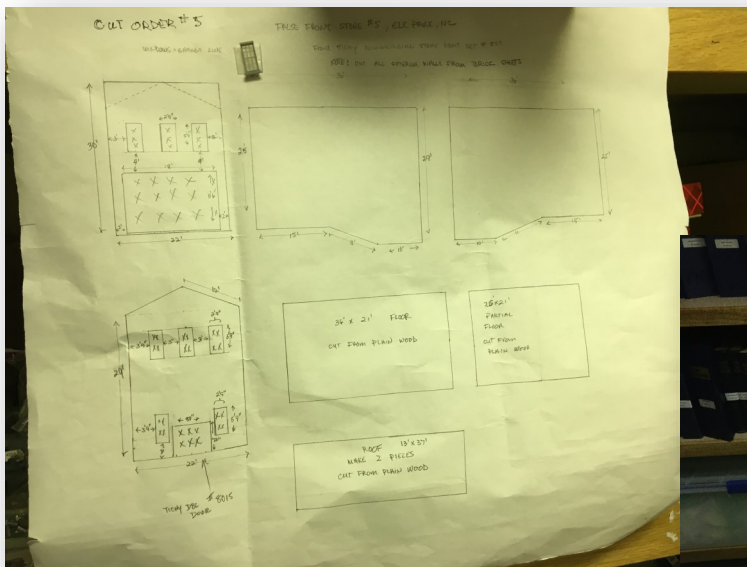


Heritage Days!

Tweetsie Layout Update Elk Park Burnt Building and Store Front:

Article and photographs by Logan Heaton

While the new viewing system is being installed things continue on Elk Park's construction. Dr. Alsop has taken the foundation from the burnt down building that sits beside the boarding house and has weathered it adding scorch marks and even overgrowth to the remaining structure as though nature is taking back over. With that finishing up Ben Merritt has been hard at work cutting out the buildings on the laser cutter with the next store now up for assembly as Dr. Alsop begins by attaching the brick to the wood frames. Stay tuned for more updates!



Heritage Days!

Heritage Days Non-Stop Northeast — Article and Photos by Logan Heaton

Non-Stop Northeast was an amazing success with many examples of both vintage and modern power on display for all our guests to enjoy, which we thank everyone for coming out to see everything we had on display across the layouts. Here we captured a few scenes from the event we hope you all enjoy.



(continued on page 24)

Heritage Days!

Heritage Days Non-Stop Northeast: Article and photographs by Logan Heaton

(continued from page 23)



(continued on page 25)

Heritage Days!

Heritage Days Non-Stop Northeast: Article and photographs by Logan Heaton

(continued from page 24)



(continued on page 26)

Heritage Days!

Heritage Days Non-Stop Northeast: Article and photographs by Logan Heaton

(continued from page 25)



The 2020 Hon3 Annual **and** **2021 All Aboard Calendars** **are Available Now!**

Our new beautiful *All Aboard 2021* calendars remain available. Get yours soon so that your discounted price gets its full benefit of all 12 months of events and reminders. Remember too, that we have a limited supply of the recent *2020 Hon3 Annual* published by White River Productions. This issue bears a color-illustrated 8-page feature of our ET&WNC RR layout. This marks the 7th consecutive year our Tweetsie layout has been featured in this collector's magazine; an outstanding accomplishment and a tribute to the quality of work to be found throughout our railroad museum. Be sure to get your souvenir copy while we still have some in stock. A few editions for the previous year's *Hon3 Annual* remain available at our sales table.



Club News

Museum Update: Article and Photographs by Logan Heaton

When planning your visit ((and possible future visits)) we ask to please be aware that with the construction on Lamb Hall more parking spots once shared with the museum have been blocked off. Let us reassure you that we are still open but may just have to find parking farther away from the museum than normal. We apologize for this inconvenience and hope you all will still make the trip to come out and see us.



Meeting Minutes

MEMRR & George L. Carter Chapter of NRHS Monthly Business Meeting Minutes- 8/17/2021

Meeting called to order at 6:38 PM by President Fred Alsop.

Members Present (or on Zoom call): Fred Alsop, Logan Heaton, Mike Tarter, Roger Teinert, Robert Sullivan, Gary Emmert, Rick Romanski, Wallace Shealy, Dean Small

After initial remarks, Fred called for Officer Reports.

Secretary's report: The club Secretary, Mike Tarter, noted that the June meeting minutes were taken by Fred Alsop (thank you, sir!) and were included in the July Signal Bridge and Coal Road. There was no general meeting in July. Gary Emmert motioned to accept the June minutes as published; this was seconded by Wallace Shealy, and approved unanimously. Any corrections or additions to the meeting notes are always invited - please discuss any during our next business meeting.

Treasurers' reports: Fred informs the group that Gary Emmert is gradually transitioning the Treasury position to Mike Tarter. The group thanked Gary for his years of financial management of the Club. Fred noted that Gary will still be Treasurer for the Museum accounts, and involved with the annual Big Train Show. Mike gave us an update on some recent deposits and payments, and provided an interim financial report for August. The MEMRR has money and is financially solvent.

Webmaster reports, Ben Merritt and Bill Smith are not in the meeting: no report.

V.P. report, John Carter: not able to attend the meeting

RR Museum Librarian, Gary Emmert has transitioned the Librarian role to Dean Small. He reports the project of new (donated) books that were in temporary storage at ValleyBrook have being cataloged and integrated into the library by Gary, Dean and Wallace. A barcode catalog system is being implemented and the items in the museum library will be visible on the ETSU library website. As before, duplicates are being separated for sale. Wallace and Dean are organizing a sale open to Club members first, on Thursday August 26th and Saturday August 28th.

Membership report, Robert Sullivan: Robert was logged into the Zoom meeting, but had no update to report.

Presidents report:

Fred thanked the members for continuing to keep the Carter Railroad Museum open to the public on Saturdays. We had 60 visitors on the 14th, despite very problematic parking.

Fred shared with us that, per CDC guidelines, ETSU has reinstated the requirement for wearing masks on campus even if a person has been inoculated for Covid-19.

ETSU classes will resume on August 23rd.

Parking passes are available for the fall semester. Please take only one pass, and be advised that parking rules are being strictly enforced.

(continued on page 30)

Meeting Minutes

MEMRR & George L. Carter Chapter of NRHS Monthly Business Meeting Minutes- 8/17/2021

(continued from page 29)

Regarding the future relocation of the museum and Club. At this time options on West Walnut street are being considered, with no concrete decision as of yet. Fred has good rapport with the owners/ developers.

Old Business:

Fred reminded us of the upcoming excursion on October 30th to Knoxville to ride the 3-Rivers Rambler and luncheon cruise on The Star of Knoxville. This excursion is cohosted by the Carter NRHS Chapter and the Carter RR Museum.

Roger Teinert brings up that the annual potluck picnic and Christmas Party plans are in limbo due to the recently increasing Covid infections. He will keep us informed.

Planning for The Big Train Show for June 2022 is ongoing, per Roger. We are staying in contact with various vendors, some are reserving tables, and people who have expressed interest. We have plenty of flyers to distribute. Speaking of train shows, Roger informed us that there is one on Oct. 3rd in Ashville, and a small one in Pigeon Forge on Oct. 23rd.

The National Narrow-Gauge Convention is being held September 1-4 in North Carolina. Two busloads of narrow gauge enthusiasts will be visiting our museum on August 31st. Fred invited volunteers to help show our guests our train layouts. We may also have some visitors on Sept. 1st. Volunteers- please contact Fred.

Coordinators meeting: no meeting was held in July. The next meeting is set for Sept. 16th, at 6 PM, in Room 235 of the Campus Center building. Fred reminded again that we should let him know of any Club or museum needs.

New Business:

The weekend of the 28th is Heritage Day - this day's emphasis is on Wild West trains.

There was discussion of reviving issuing membership cards. No decision was reached.

Roger Teinert made a motion nominating Bill and Barb Beagan for Emeritus Status. This was seconded by Gary and passed by acclamation. There was some discussion on whether Dan and Charlene McCloud were already Emeritus members, and Bill Hoover. Fred clarified what Emeritus Status is.

The meeting was adjourned at 7:28, and turned over to Logan for a prepared program.

Logan has a program to show of the ATSF Streamliners used on The Surf Line in California.

Next Meeting is September 21st in ETSU Brown Hall room 223.

Respectfully submitted, Mike Tarter, Secretary

**Mountain Empire Model
Railroaders Club**

Location:



George L. Carter Railroad Museum
East Tennessee State University

Business Meetings

Held monthly on the
3rd Tuesday at 6:30pm.

*

Weekly Work Nights

Thursdays from 4pm until ?

MEMRR Club Officers

- **Club President & Director of George L Carter Railroad Museum, ETSU:** Fred Alsop
alsopf@mail.etsu.edu
- **Vice President:** John Carter
carterjohn92@gmail.com
- **Treasurer:** Gary Emmert
jbox1015@comcast.net
- **Secretary:** Mike Tarter
miketarter06@gmail.com
- **Webmasters:**
Logan Heaton
Ben Merritt
Bill Smith
memrrwebmaster@gmail.com
- **Newsletter Editor:**
Cathy Smith

George L. Carter

Chapter NRHS Officers:

- **President:** Dr. Fred J. Alsop
- **Vice Pres:** Roger Teinert
- **Secretary:** Mike Tarter
- **Treasurer:** John W. Dodge,
econguy2000@hotmail.com
- **Historian:** Carolyn Greg
- **National Representative to the NRHS:** Charlotte Pahr

George L Carter Railroad Museum and MEMMR

The many colorful multiple railroads of the Midwest are featured at the George L. Carter Railroad Museum, located in the Campus Center Building of East Tennessee State University. The region encompassing Chicago, Detroit, Louisville, Milwaukee and St. Louis was the true epicenter of American commerce between east and west during the 20th century. Literally dozens of railroads large and small provided service throughout Ohio, Indiana, Illinois, Kentucky and the upper midwestern states, all service as links to the chain.

Between passenger and freight operations, the railroad were crucially important in the era before widespread air travel and interstate highways. This was especially true during the 1st & 2nd World Wars. Whether it was perishables like produce and livestock or raw commodities such as coal and ore, everything from store goods to Studebakers came from this region. Since so many models of these trains remain popular, icons of streamlining and strength, it is planned to have excellent Midwestern representations in operation by volunteers on the museum's 24x44 foot HO scale layout. The Carter Railroad Museum is open on Saturdays from 10:00 AM to 3:00 PM, and includes model railroad layouts, a special child's activity room, and ongoing programs. There is no admission fee but donations are welcome for its upkeep. The museum is also seeking artifacts for display, including the newest addition dedicated to the long-defunct, but well-remembered 'Tweetsie' line, the East

In addition to the displays, there is also a growing research library, and an oral history archive being established as part of the museum's programs. Info can be found online at '<http://etsu.edu/railroad/>' or '<http://johnsonspot.com/>' or '<http://www.stateoffranklin.net/johnsons/glcarter/cartermuseum.html>'

Members of the George L. Carter Chapter of the National Railway Historical Society and the Mountain Empire Model Railroaders (MEMRR) club coordinate the exhibits. Visit 'www.memrr.org' to learn more about MEMRR, or visit '<http://glcarternrhs.com/>' to learn more about Carter Chapter, which helps demonstrate and maintain the model layouts, museum exhibits and other projects.

Membership opportunities are available to adults, and include special benefits and model railroading enjoyment.

The museum can be identified by a flashing railroad crossing signal at the back entrance to the Campus Center Building. Visitors should enter ETSU's campus from State of Franklin Road (at green light) onto Jack Vest Drive and continue east to North Dossett Drive (then left) to John Roberts Bell Drive at end, then right then left on Ross Drive(176) to end, adjacent to the flashing RR crossing sign.

**For more information about Heritage Day,
contact Fred Alsop at 423-439-6858 or alsopf@mail.etsu.edu.*

**For disability accommodations, call the
ETSU Office of Disability Services at 423-439-8346*