



THE SIGNAL BRIDGE

NEWSLETTER OF THE MOUNTAIN EMPIRE MODEL RAILROADERS CLUB

MAY 2017 - MEMBERS EDITION

Volume 24 – Number 5

Published for the Education and Information of Its Membership

CLUB OFFICERS

President:

Fred Alsop

ALSOPF@mail.etsu.edu

Vice-President

John Carter

carterjohn92@gmail.com

Treasurer:

Gary Emmert

jbox1015@comcast.net

Secretary:

Greg Mundkowski

fleetsaylor1981@yahoo.com

Newsletter Editor:

Ted Bleck-Doran

Ted_mary@memrr.org

Webmasters:

John Edwards

webmaster@memrr.org

Bob Jones

bobjonesmemrr@gmail.com



LOCATION

ETSU Campus
George L. Carter
Railroad Museum

HOURS

Business Meetings are held the 3rd Tuesday of each month. Meetings start at 6:30 PM in:

Brown Hall
Room 223
ETSU Campus,
Johnson City, TN.

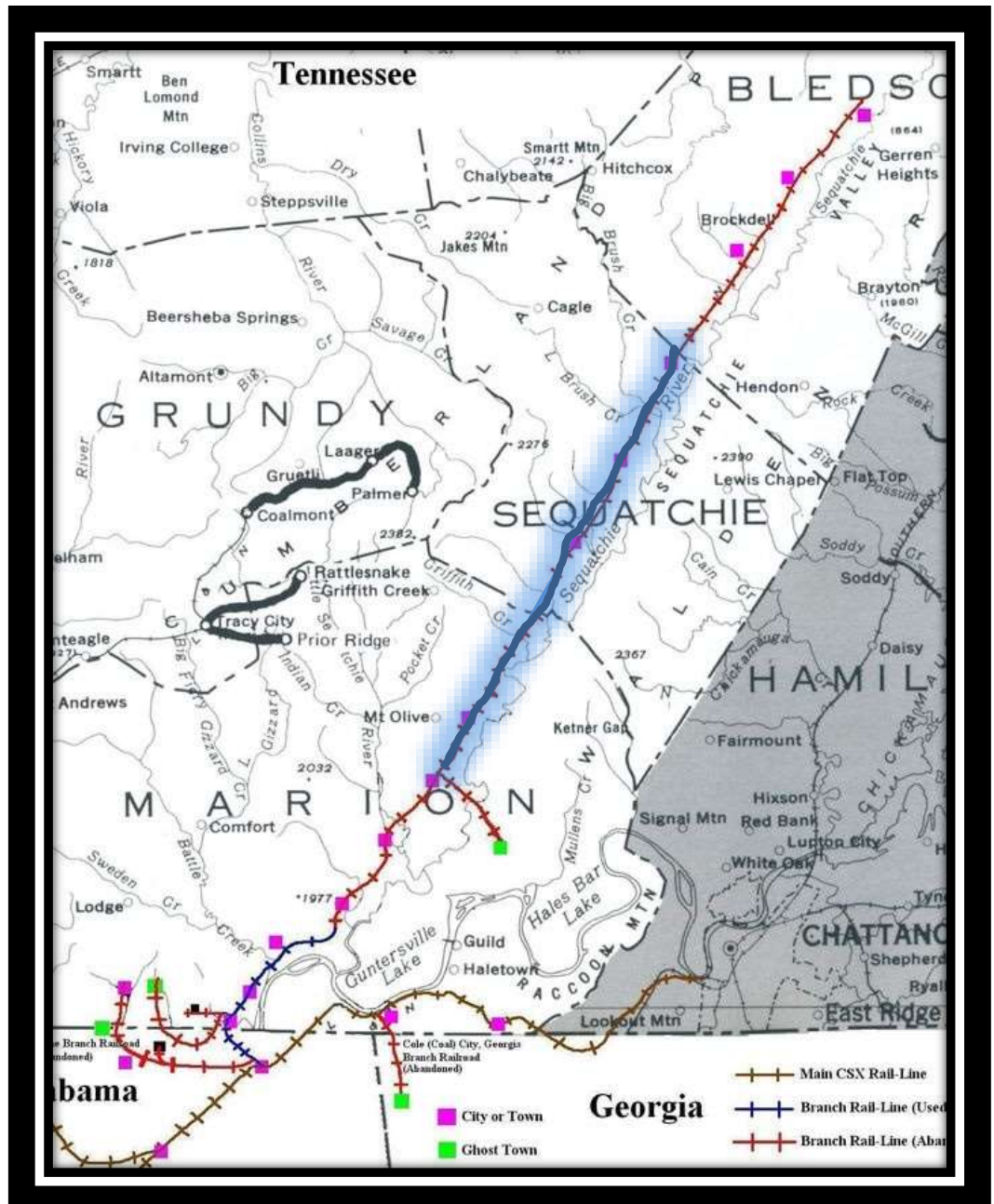
Open House for viewing every Saturday from 10:00 am until 3:00 pm.

Work Nights are held each Thursday from 4:00 pm until ??

SPECIAL FOCUS THIS ISSUE

THE SEQUATCHIE BRANCH – Part 3

NASHVILLE CHATTANOOGA & St. LOUIS RAILWAY



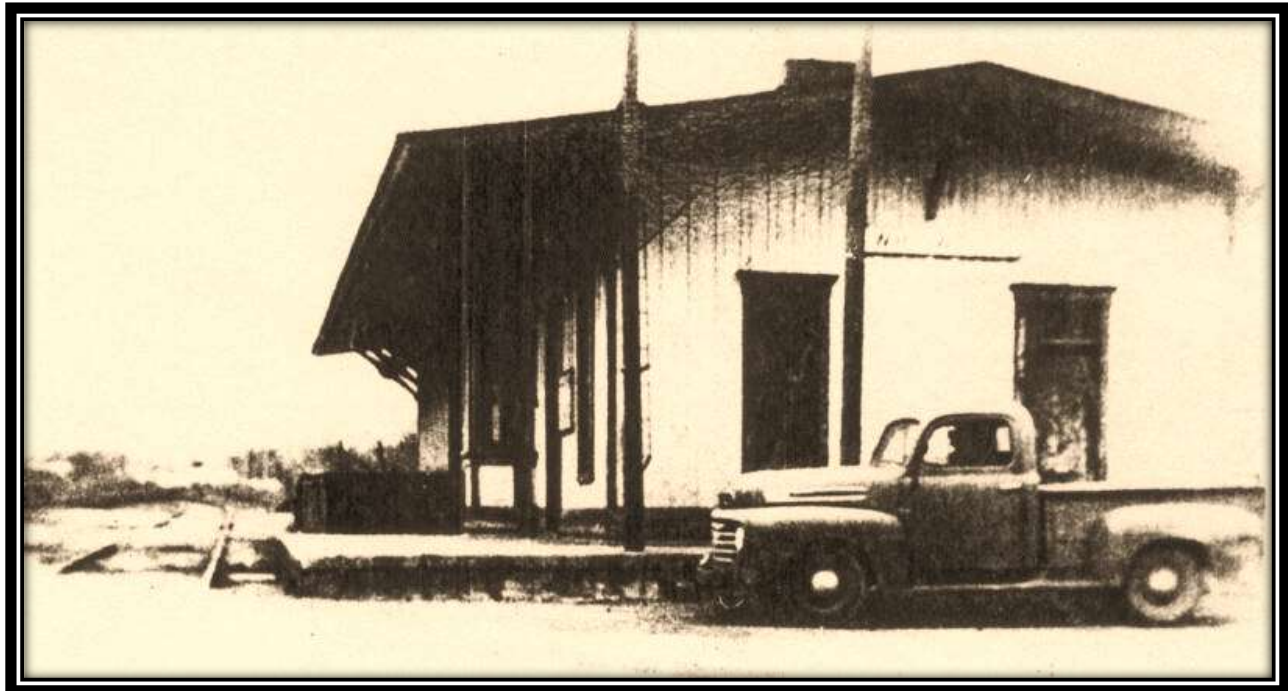
In this issue we will follow the Sequatchie Branch from Whitwell TN in Marion County to Dunlop TN in Sequatchie County

WHITWELL, TN
MP 22.60

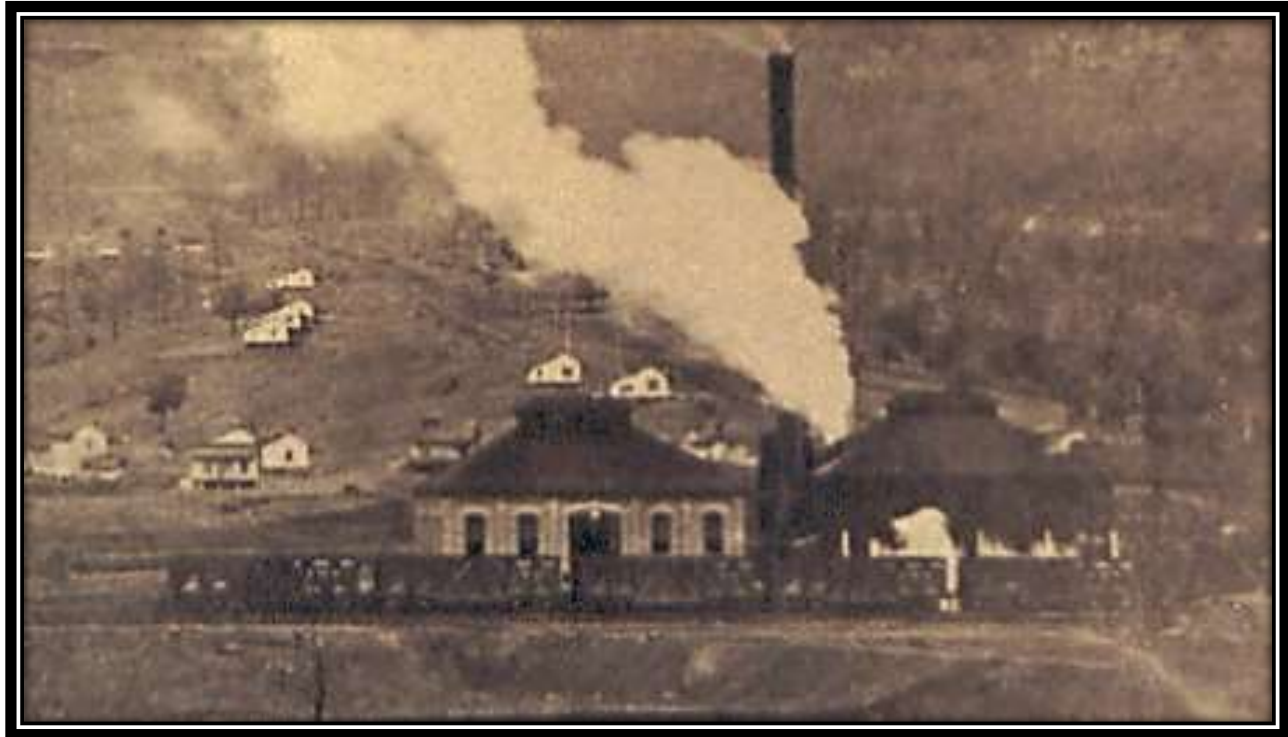
The town that became Whitwell was originally known as Cheekville, but renamed "Whitwell" for Thomas Whitwell, a [Welsh](#) metallurgist and cofounder of the Southern States Coal, Iron and Land Company, who was killed in a mine explosion in 1878. Whitwell was incorporated as a city in 1956, having grown as a mining town due to the abundance of coal in the mountains near the town. In 1981 there was a [major mining accident](#) when 13 coal miners were killed in an explosion. A full list of the names of those killed in the mine explosion is on a monument at Whitwell High School. Whitwell also has an annual [Labor Day](#) celebration that has been celebrated for over 50 consecutive years.



The Tennessee Comptroller's Tax Map shows the location of the NC&StL RY depot at Whitwell, as well as the location of the Tennessee Coal and Iron Mine Tipple and Coke Ovens



The depot at Whitwell TN is a standard NC&StL RY design with broad overhanging eaves and gently pitched roof
Photo from South Pittsburgh Historical Society

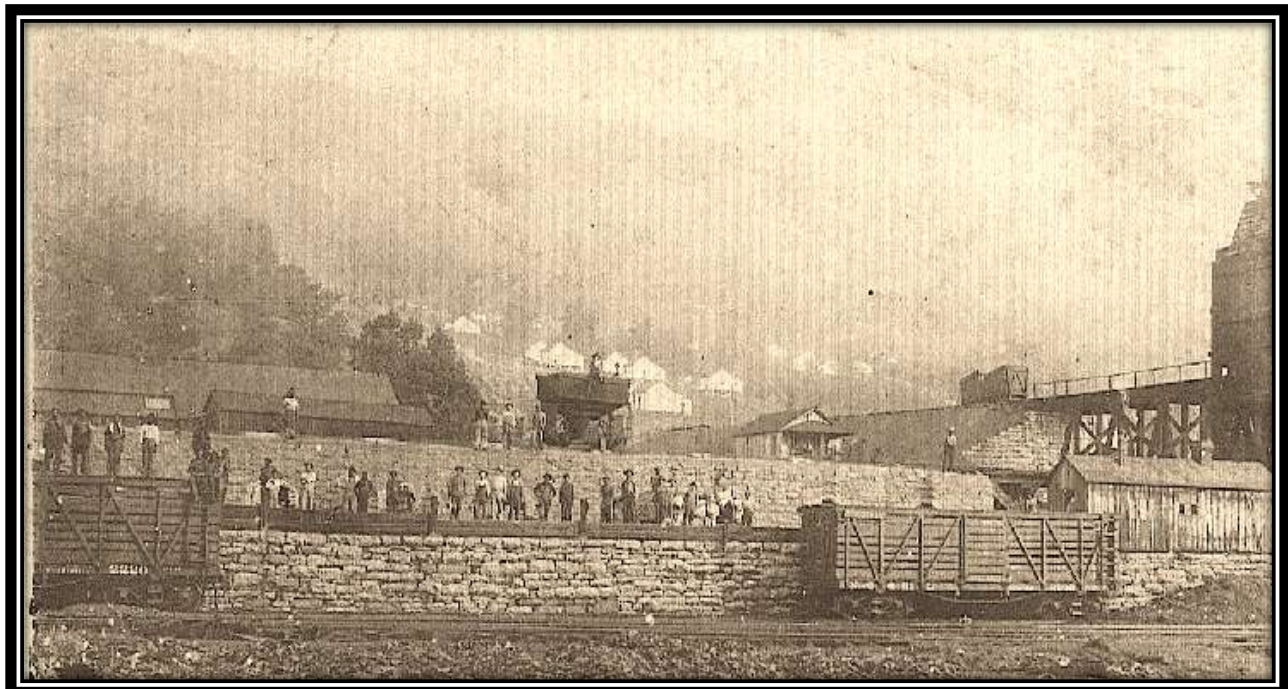
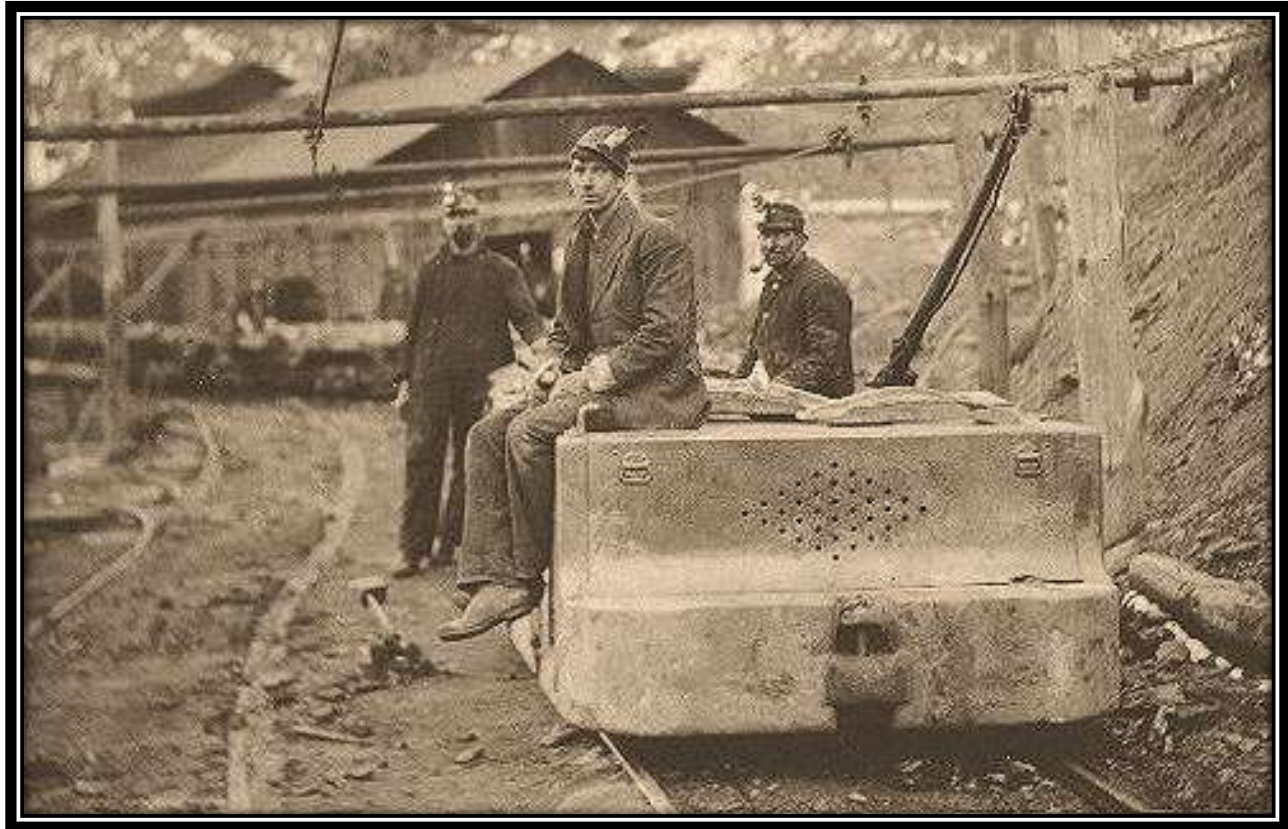


Seen here is the tipple, power house and incline of the Tennessee Coal & Iron Railroad Co. at Whitwell, Tennessee.

WHITWELL TN COAL MINES

Following 3 photos are from Miningartifacts.org





This is a picture of the Coke Ovens at Whitwell TN around 1900. The tracks in the foreground serve the coal tippie switching leads. Hoppers carrying the coke would be spotted along the base of the first tier since the ovens would have been emptied through the archways on top of the tier. The ovens were charged with metallurgical quality coal using the traveling bin pictured top center of the photo. The bin probably held the correct amount of coal to charge a single oven from the top of the oven. A response to a newspaper inquiry regarding the photograph provided the following information:

"It is a view of the east side of the Whitwell coke ovens. A mule was used to haul the coal conveyor (the triangular object seen on top) up and down between the two rows of ovens, and the animal, it is said, became blind from the heat and smoke. A rope actuated by a drum, was then

used to move this conveyer, carrying slack coal to be converted into coke. In the background could be seen the former commissary of the Tennessee Coal iron and Railroad company was destroyed by fire... and of the right can be seen a portion of the frame of the tipple.”
 Photo from Marion County Historical Society

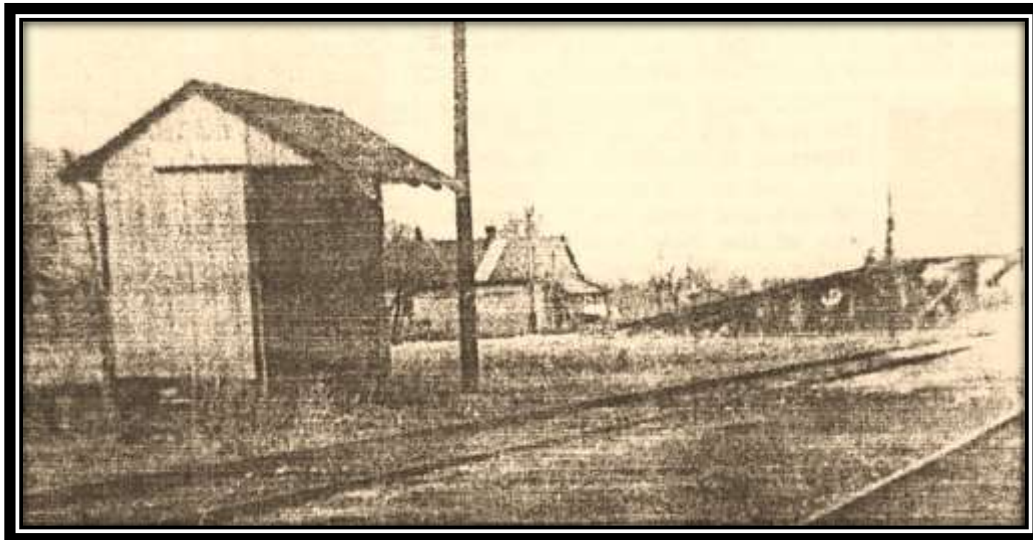
DAUS, TENNESSEE

MILE 32.50



A Daus, Tennessee family is pictured here in about 1946. The old Daus passenger & freight depot can be seen in the background. This depot was later replaced with a waiting shed pictured below.

Photograph Courtesy, Eulene Harris



The Daus, Tennessee passenger waiting shed on the Sequatchie Valley Railroad (Pikeville Branch Railroad) is pictured above.

Photograph Courtesy, Eulene Harris

DUNLAP, TENNESSEE

MILE 32.50

Dunlap was founded in 1858 as a county seat for Sequatchie County, which had been created the previous year. The city was named for state legislator William Dunlap, who played a prominent role in the county's creation. The city's initial 40 acres (0.16 km²), which were deeded to the county commissioners by Willam Rankin, were chosen due to their central location within the new county. Dunlap was incorporated as a city in 1941.^[5]

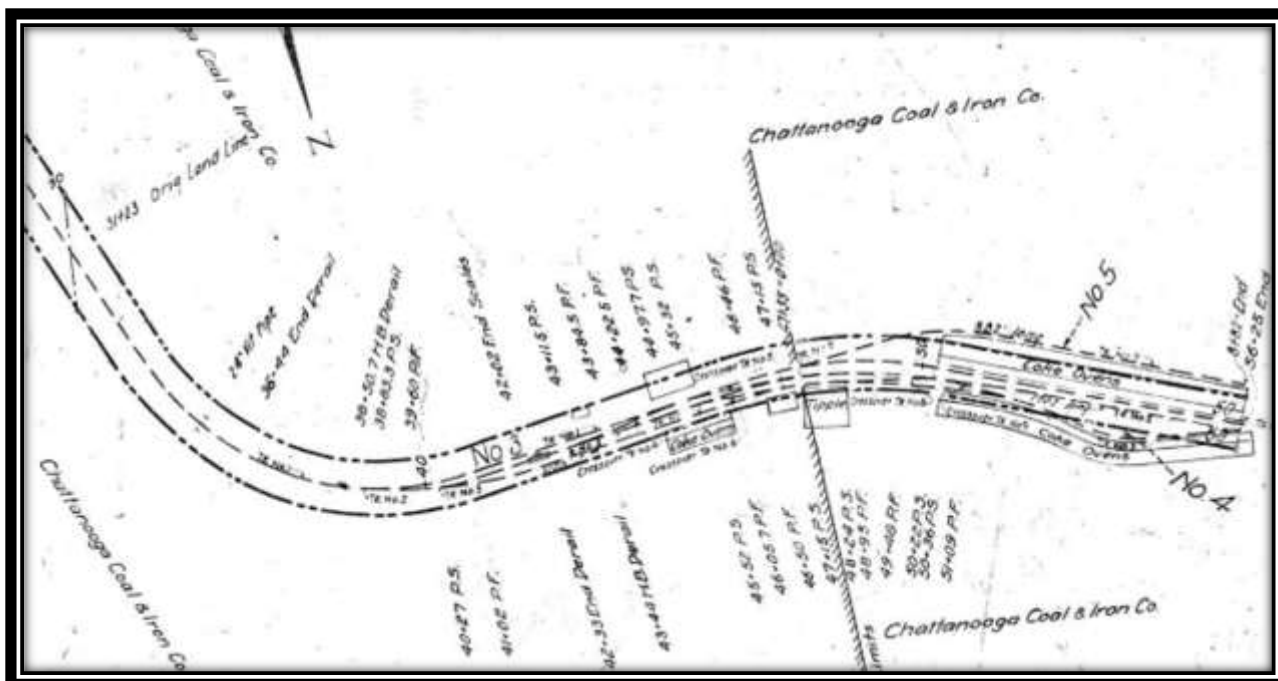
Around 1900, the Douglas Coal and Coke Company purchased 14,000 acres (57 km²) of land in the Dunlap vicinity with plans to mine coal and convert the coal into industrial [coke](#). Coke, which is created by heating coal and removing its volatile matter, is used primarily as a [deoxidizing agent](#) in the production of [pig iron](#). To convert coal mined on nearby Fredonia Mountain into coke, Douglas built the first of 268 ovens. The company used an incline railway to move the coal from the mountain to the ovens. Although Douglas went bankrupt in 1904, the Chattanooga Iron and Coal Company purchased the ovens, and continued producing coke until 1927.^[6] In the 1980s and 1990s, the Sequatchie Valley Historical Association acquired the ruins of the coke ovens and established [Dunlap Coke Ovens Park](#).^[7]

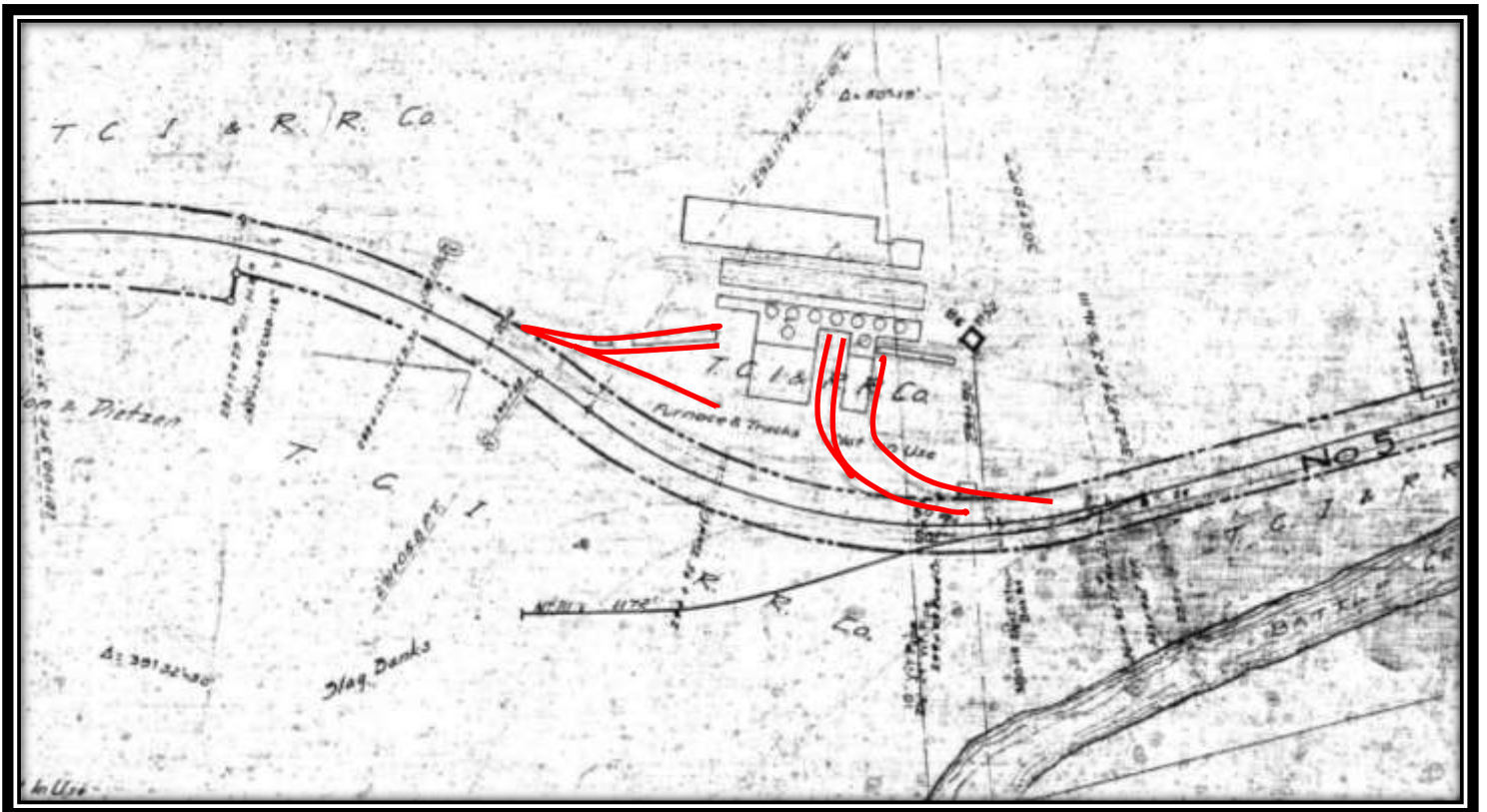




DOUGLAS COAL & COKE CO.

Around 1900, the Douglas Coal and Coke Company purchased 14,000 acres of land in the Dunlap vicinity with plans to mine coal and convert the coal into industrial coke. Coke, which is created by heating coal and removing its volatile matter, is used primarily as a deoxidizing agent in the production of pig iron. To convert coal mined on nearby Fredonia Mountain into coke, Douglas built the first of 268 ovens. The company used an incline railway to move the coal from the mountain to the ovens. Although Douglas went bankrupt in 1904, the Chattanooga Iron and Coal Company purchased the ovens, and continued producing coke until 1927. In the 1980s and 1990s, the Sequatchie Valley Historical Association acquired the ruins of the coke ovens and established Dunlap Coke Ovens Park.





PAUL'S PICS PAGE
DWARF SIGNAL PRODUCTIONS
PHOTOS BY PAUL HAYNES



AROUND THE MOUNTAIN EMPIRE MODEL RAILROADERS LAYOUTS GEORGE L CARTER RAILROAD MUSEUM COORDINATORS MEETING MINUTES

MARCH 16, 2017

Ted Bleck-Doran, Newsletter Editor: absent due to family emergency.

Gary Emmert, Librarian, absent

Roger Teinert: Train Show Report, the Hot Dog vendor from last year's show will be returning, there are 8 layouts signed up so far

Mike Baker: Large Scale, we have ordered a track cleaning car for track maintenance on the two track areas. Both layouts are up and running.

Dean Small: Cope Layout, is in storage

Robert Sullivan: Lego will not be attending the train show as previously thought.

Geoff Stunkard: Heritage Coordinator

Gregg Mundkowsky: ET&WNC, the mine cars that will be up at the Cranberry Mine have been re-gauged to HO_n3 from HO_n3. We still have a lot of freight cars that need to be built, anyone who would like to give one a try get in contact with me. It is suggested that we start a junior program for the youth members of the club, this would be a program which would teach the members about the different areas of model railroading, Scenery, track laying and maintenance, weathering, kit building (Rolling Stock and Buildings). If anyone has any suggestions please see me.

John Carter: HO Layout, Absent

Jesse Kittle: N Scale, Lay is running fine, some scenery repair was completed by Mike Buster and Gregg Mundkowsky

Gary Gilliam: Locomotive Repair, Two of the 4-6-0 are ready to use for the June show. Completed the repairs for the HO_n3 Passenger Car. Some work was done to the HO_n3 Shay. It appears that this HO_n3 is just a HO loco with smaller trucks

Jim Hoit: Rip Track, We have new wheel sets in that are working great. The new cabinet looks great and is filling up fast. He has been trying to put the cars in order by roadname.

Respectfully submitted,

*Gregg Mundkowsky,
Secretary, MEMRR*



MOUNTAIN EMPIRE MODEL RAILROADS BUSINESS MEETING MINUTES MARCH 21, 2017

The MEMRR January 17, 2017 was called to order by President Fred Alsop at 6:30 pm.

Fred started the meeting by showing the map that we got from Chris Ford (President of the ET&WNC Historical Society) the maps will be available for purchase at the convention in June for \$35.00.

Officer's Reports are as follows:

Secretary's report: February's minutes were pass as published in the newsletter.

Newsletter Editor's Report: Ted reported that there were 26 pages in the March newsletter.

Treasury report: Income was \$227.00 and we paid out \$54.48 which we will get back when members pick up their shirts.

Webmasters Report: John Edwards reported that the web was up and running fine. He also stated that he purchased a new computer that he will be using for the newsletter because of some problems with his old one.

President's Report: Former club member Gary Cameron has brain cancer which is terminal, he has chosen not to take any treatments and to live out his life with the best quality of life that he can. He is donating a 1930s Lionel Locomotive (Possibly a Hudson) to the club. A plaque will be placed with

the locomotive.

Fred, Gary Emmert, and Paul went to Missouri and picked up the module of the Johnson City Cranberry Smelter, from the widow of John Waite. This was built in Sn3 and will be displayed in the ET&WNC room.

Old Business.

The spring fling will be April 20th at the Longhorn Restaurant in Johnson City at 6:00 pm.

New Business

We had our first operating session on the first Tuesday in February and we had a great turnout. As expected we had some problems but everyone had a good time. This will be an ongoing program on the 1st

There was a first reading of proposed by-laws changes establishing a new membership category (Provisional Member) and a New Member Vetting Committee. There will be two more readings before the membership will vote on the proposed changes.

VOLUNTEER SIGN-UP

Fred Alsop issued the monthly call for Saturday open-house volunteers

ANNOUNCEMENTS:

There were no announcements.

PROGRAM

Those in attendance were treated to AED and CPR refresher training offered by Lisa Carter.

NEXT BUSINESS MEETING:

The next business meeting of the Mountain Empire Model Railroaders will be held Tuesday April 18th at 6:30 PM in room 223 of Brown Hall.

Respectfully submitted,

*Gregg Mundkowski,
Secretary, MEMRR*



MOUNTAIN EMPIRE MODEL RAILROADERS MINUTES FROM BUSINESS MEETING

APRIL 18, 2017

The meeting of the Mountain Empire Model Railroaders was called to order by President Fred Alsop at 6:37 PM with 14 members present. There were no guests or visitors in attendance,

OFFICER'S REPORTS:

SECRETARY'S REPORT:

In the absence of the secretary a motion was made and seconded to table the secretary's report (including minutes from both the George L. Carter Railroad Museum Coordinators' meeting and the MEMRR business meeting held in March) until the May business meeting.

MOTION PASSED

NEWSLETTER EDITOR'S REPORT

Ted Bleck-Doran reported that the April issue of *THE SIGNAL BRIDGE* has been distributed to the membership. The issue is 24 pages in length. Minutes from the March Coordinators meeting and MEMRR Business meeting arrived too late to be included due to moving the March deadline earlier in the month. Special focus for the issue included a continuation of the history of the NC&StL RY Sequatchie Branch and the restoration of the W&A 4-4-0 "Texas". A special thank you to the South Pittsburgh Historical Society for text and photographs of the Sequatchie Valley. Paul's Pics featured

some of the special paint units that have moved through the area during March. Articles of interest to the membership need to be submitted by the 8th of each month.

TREASURER'S REPORT

Gary Emmert reported that income exceeded expenditures for the month of March leaving the organization with a surplus balance. Table reservations for dealers at the June Train Show appear to be picking up as the event draws closer.

WEBMASTERS' REPORT

Fred provided a report from John Edwards in his absence indicating that there had been a delayed release of *The Signal Bridge* due to recent health problems. There was no report from Bob Jones.

VICE-PRESIDENT'S REPORT

John Carter reported that the month's clinic would feature a showing from Allan Keller's video series *Great Model Railroads*. Don Ramey volunteered to provide a demonstration clinic on installing DCC decoders in locomotives for the June meeting. Gary Emmert recommended view a video from the newly acquired collection of John Waite for May.

PRESIDENT'S REPORT

Fred Alsop announced:

- 1) the completion of the library move into room 101 and the conversion of the former library space to product storage and work station;
- 2) requests for volunteers to open and operate the layouts for two special events (April 22 3:00 PM – Jonesborough Presbyterian Church) AND (May 9th 9:30-10:30 AM ETSU President Nolan and a 5th Grade class);
- 3) Fred announced that he will be busy the first few weeks of May with graduation exercises, and teaching stint in South Carolina;
- 4) a crew from MEMRR traveled to the home of John Waite and returned with his Sn3 module of thee Cranberry Smelter which will be put on display in the Kenneth Marsh Gallery.

OLD BUSINESS:

- **TRAIN SHOW:** Roger Teinert reported that 60 tables have been reserved by 30 vendors with more vendors expected to reply this month and next. There are 7 layouts scheduled for the show as well including Jim Millhorn's Live Steam layout. Fred Alsop added that there will be a planned expenditure for \$1800 for road banners and local advertising.
- **LIBRARY UPDATE:** Gary Emmert reported that the library move to it new location is completed. The library expects to receive several hundred book, video and DVD titles from John Waite estate. A center island reading stand has been obtained from the university. Shelving will be made by Duane Swank since the university no longer has a record of the manufacturer.
- **NEW MEMBER VETTING BY-LAWS CHANGES:** Ted Bleck-Doran reported that with the publication of the April issue of *THE SIGNAL BRIDGE* members have had a chance to comment on the proposed changes to the by-laws establishing a vetting process for new members. No comments or suggestions were received following the first reading in March. May will be the 3rd reading followed by a vote up or down on the changes. If approved the vetting committee will reconvene to define rights, responsibilities, orientation, and privileges for new members.

NEW BUSINESS

- **April Heritage Day:** Fred Alsop reported for Geoff Stunkard that the theme for the April Heritage Day will be *Diesels – All Diesels 1925-1960*. Members are asked to plan on running first generation diesels for the Saturday open house on the 29th.
- **May Operating Session:** Ted Bleck-Doran announced that the third MEMRR Operating session will be held on Tuesday, May 9th from 6:30 until 9:00 PM. Setup will start at 5:30. There are plenty of jobs to go around to keep a crew of 10 or more members very busy.

- **Spring Fling:** Jim Pahrts reported that the Spring Fling will be held Thursday, April 21st at the Longhorn Steakhouse in Johnson City starting at 6:30 PM. Over 40 members from the MEMRR and GL Carter Chapter – NRHS will be in attendance.
- **Rail Excursion:** the George L Carter Chapter- NRHS will host a rail excursion to Knoxville on June 24th. Participants will travel to and from Knoxville by charter bus. Activities include a shop tour of the diesel repair facilities and a ride on the 3 Rivers Rambler followed by a dinner served on the Queen of Knoxville paddle wheeler. Reservations are still available but the trip is expected to fill up.
- **April Coordinators' Meeting:** The next GL Carter RR Museum Coordinators' meeting will be held Thursday May 11th at 6:00 PM and be reported in *THE SIGNAL BRIDGE*.

VOLUNTEER SIGN-UP

Fred Alsop issued the monthly call for Saturday open-house volunteers

ANNOUNCEMENTS:

There were no announcements.

PROGRAM

Those in attendance were treated to an Allan Keller! Great Model Railroads video featuring the Virginian and Ohio Railroad.

NEXT BUSINESS MEETING:

The next business meeting of the Mountain Empire Model Railroaders will be held Tuesday May 16th at 6:30 PM in room 223 of Brown Hall.

Respectfully submitted,

*Ted Bleck-Doran,
Acting Secretary, MEMRR*



NEW MEMBER VETTING PROCESS – 3rd READING

AMMENDMENTS TO THE MEMRR BY-LAWS

CHANGES NOTED IN BOLD

Article IV. Membership is open to any individual with a sincere interest in model railroading and shall be governed by the duties, rights, responsibilities and obligations as described in Appendix B: Table of Membership Classifications, Dues, Rights, Responsibilities and Obligations. All membership levels include a digitally available copy of the club newsletter known as The Signal Bridge.

PROVISIONAL MEMBER: Any person seeking new membership in any of the membership categories requiring payment of membership dues; this is a temporary membership category lasting the initial 120 days of membership to allow for proper vetting of the candidate by the **MEMBER VETTING COMMITTEE** (See ARTICLE XVII); the provisional member's activities may be restricted as described in Appendix B: Table of Membership qualifications, Dues, Rights, Responsibilities, and Obligations; a provisional member's request for membership will be acted on by the **MEMBERSHIP VETTING COMMITTEE** immediately following the expiration of the 120 day waiting period with the committee's recommendation presented at the next Business Meeting following the completion of the 120 day waiting period.

***NOTE:** The 120 day period is the equivalent of 1/3rd of a year's membership dues and is equal to the suggested \$10 provisional membership dues.*

FULL MEMBER is defined as one who is 18 years of age or older and pays "Full Member" dues as set by the club in Article VIII and is willing to construct or assist with the building and/or operation of one or more modules or layouts which meets the club specifications. **ONLY PAID UP FULL MEMBERS** will have access to the museum key box.

HOUSEHOLD MEMBER is defined as a **FULL MEMBER** if 18 years of age or older or as a **YOUTH MEMBER** if 14 to 17 years of age. **HOUSEHOLD MEMBERS** shall reside at the same address as the **FULL MEMBER**. **HOUSEHOLD MEMBERS** should be interested in model railroading and be willing to support club activities. **HOUSEHOLD MEMBERS** will have one vote per adult 18 years of age or older.

YOUTH MEMBER is a non-voting member 17 years of age or younger and will be accepted if sponsored by a **FULL MEMBER**. The **FULL MEMBER** shall be present and will accept full responsibility, financial and otherwise, for the sponsored youth.

STUDENT MEMBER is a voting member who is a full-time student enrolled in any private or public technical school, college or university. Proof of student status is required to establish and maintain student membership.

DISTANT/REMOTE MEMBER resides 100 miles or more from Johnson City and intends to occasionally participate in **MEMRR** meetings and activities.

EMERITUS MEMBER is one who has been a long-time active member who is voted to this lifetime voting status by 2/3's vote of the membership present.

HONORARY MEMBER is one who has been awarded special non-voting membership for outstanding contribution by a non-member. To be established by 2/3's vote and renewed by similar vote at each November meeting.

ARTICLE XVII. The organization will maintain a **MEMBERSHIP VETTING COMMITTEE** to review, monitor and make recommendations for membership on all persons seeking a membership status that require payment of dues and are considered Provisional Members. The **MEMBERSHIP VETTING COMMITTEE** shall consist of 9 members appointed by the president of the organization and shall include 3 **FULL MEMBERS** drawn from each of the following categories: Officers, Module Owners, Members-at-Large. The committee members will be responsible for monitoring, mentoring and evaluating the persons seeking membership status and who are considered Provisional Members. The committee will make recommendation on the Provisional Member's request for membership following the completion of the 120 day provisional membership period. Recommendations will be decided by majority vote of all the committee members. Recommendations will be presented to the **MEMRR** membership at the business meeting immediately following the completion of the 120 day waiting period. Should there be a tie due to absention of one or more committee members, the recommendation will be decided by the vote of the President, **MEMRR**, (or Vice-President in the absence of the President). Recommendations are to include: Approval of Membership status, Refusal of Membership Status, Extension of Provisional Status for one additional 120 day period.

APPENDIX

Application for Membership

Name:

Address:
 Phone:
 Additional phone number or point of contact
 Email:
 Sponsor:
 End of provisional status date: __/__/____
 Membership level applied for:
 Full (Adult)
 Associate
 Household (additional Member is applying a:
 Youth under 14 years as part of Household
 Membership)
 Youth 14-18 years

Student (Program Enrolled in is: _____)
 Adult 18 years or older
 Youth (14 to 18 years old)
 Student (enrolled in higher education program) -
 Program Enrolled in is: _____

How did you learn of mountain empire model railroaders?
 What scale(s) are you interested in?
 What are your modelling strengths?
 What would you like to learn about modelling?
 Do you have a home layout?
 Are you interested in building a module?
 Do you have a member to sponsor you?

STREAMLINED DIESELS WILL BE ROLLING THUNDER AT ETSU'S CARTER RAILROAD MUSEUM ON APRIL 29TH

*HERITAGE DAY "DIESEL CELEBRATION" PROGRAM FEATURE LEGENDARY DESIGNS ON
 THE FINAL SATURDAY OF APRIL*



The era of streamlined internal-combustion design on rails is coming to the George L. Carter Railroad Museum, located in the Campus Center Building of East Tennessee State University. On the upcoming Heritage Day 'Diesel Celebration' on April 29, the facility is showcasing the first-generation 1933-1958 era of diesel power, when colorful paint and streamlined shrouding helped create excitement on America's railroads. Calling on the talents of some of the period's most noted designers, these creations would fuel the dramatic change from steam to diesel power. Open free of charge to the public, the Carter Museum facility will honor this epochal era in American rail transportation.

"This was an amazing time of change, considering that steam power had been virtually unchallenged before 1930. The result to the industry cannot be underestimated," notes Heritage Days coordinator Geoff Stunkard. "The diesels, with easy maintenance, lack of water and fuel needs, multiple-unit possibilities and beautiful designs, truly reshaped the nation's lines. By 1960, many of these early

designs were already being superseded themselves, leaving this quarter-century as the true bell weather of what had transpired."



Though the earliest models were built as single-engined articulated passenger sets for the Burlington Route and Union Pacific lines, it was World War II and the huge demand for power that sealed the diesel deal. Being able to add units as required without resorting to additional train crews, as well as lacking the need for boiler and running gear attention, gave these locomotives huge advantage from every angle, especially economic. By 1955, many lines had already switched to this form of horsepower, and by 1960, the steam era was basically over.

CARTER MUSEUM HERITAGE DAYS 2017 Final Saturday each month

April:	Diesel – All diesels 1925-1960
May:	Modern – 21st Century
June:	Tri-Cities
July:	Western
August:	Midwestern

September:	Heritage paint schemes
October:	Roanoke Rails
November:	Clinchfield
December:	Fallen Flags



ETSU'S CARTER RAILROAD MUSEUM TO SPONSOR A SPRING TRAIN EXCURSION ON JUNE 24, 2017

The George L. Carter Chapter of the National Railway Historical Society (NRHS) and East Tennessee State University's George L. Carter Railroad Museum will sponsor a scenic train excursion and Riverboat Cruise to Knoxville on Saturday, June 24, 2017. Tickets must be purchased no later than June 12. The price for the excursion is \$90 for adults and \$80 for children ages 3-12, children ages 2 and under may ride free. The fee includes bus transportation to and from Knoxville, a tour of the back shops, a 90-minute steam train ride and a luncheon cruise on the Tennessee Riverboat.



the buses will begin loading at 3:00 p.m. for departure at 3:30 p.m. for the return to Johnson City, arriving around 5:30-6 p.m.

Ticket order forms and liability waivers are available at the Carter Railroad Museum on Saturdays from 10 a.m.-3 p.m. or online at the Mountain Empire Model Railroaders website at www.memrr.org by choosing "NRHS News" and then "Ticket Order Form." A signed liability waiver form must accompany the ticket request.

Payment may be made by check or money order payable to the G. L. Carter Chapter, NRHS, and mailed to **G. L. Carter Chapter, NRHS; attn.: Bill Beagen, 1091 Henderson Court, Jonesborough, TN 37659.**

For more information, contact Bill Beagen at (423) 753-7890 or email him at rbill@embarqmail.com



Passengers should arrive at ETSU's parking lot 22A on Go Bucs Trail no later than 6:30 a.m. to travel by motor coach to Knoxville. The Three Rivers Rambler steam train will depart at 10:00 a.m. and follow a scenic route along the Tennessee River following the back shop tour. Upon returning to the station at 12:30 p.m., passengers will be delivered to the Tennessee Riverboat Company for the luncheon cruise. Upon returning from the riverboat cruise,

THE VIEW FROM THE ENGINEER'S SIDE OF THE CAB. THE MEMRR PRESIDENT'S MONTHLY COLUMN

With the month of May and its flowers also comes the end of the Spring Semester at ETSU. More than 2,000 students will graduate on May 6th, most of the remainder will be heading off campus for the summer, and my life as a professor will take a different turn for a few weeks. Change is in the air and some of it will affect the G.L. Carter Railroad Museum, the MEMRR and the G.L. Carter Chapter NRHS. None of it in a negative way; just some changes as follows: **Dining:** The **ETSU Market Place Cafeteria** will be changing its regular operations and will be closed for most of the month of May so, may I suggest that those who want to dine together before the club business meetings this summer, beginning this month and running through August, plan to meet and eat at **Portobellos Restaurant** in the Kroger Shopping Center on West State of Franklin at the regular time of 5:00 p.m. **Fred's Schedule:** I will be in South Carolina the weeks of **May 7-11**, and **May 22-26** conducting training workshops for USDA Forest Service and the SC Dept. of Natural Resources respectfully. I will be gone on those Thursdays (may be back in time for work on the 11th), but in town for our Saturday museum public schedules and for the May business meetings. You can reach me in the evenings via cell phone if there are problems I need to address. **Parking:** You should have an easier time finding parking during the day on campus, Thursdays or other times, with the decreased student population. Your volunteer parking passes are valid into August. **Thank You!** My thanks to those of you who stayed later on Saturday, April 22, to keep the Carter RR Museum open for Jim and Charlotte Pahr's Presbyterian church group to visit the museum after hours and for providing the tours and operating the layouts. Your extra efforts on behalf of these visitors was very appreciated. **Laurn Lewis** our FWS student helper in the Little Engineers Room will be leaving for the summer. We wish her a wonderful break from her classes and thank her for all her work and interactions with our visiting children over this past academic year. **Birthday Party:** We have not hosted a children's birthday party for some time now, but **Kelsey**, our Station Master, tentatively has one scheduled for **Saturday, May 20th**. Keep your calendars open to help us set up if this event does occur. Thanks.

New Members: Welcome new members **Jo Judd** and her nephew, **Ramsey Woudersak**. Ramsey will need sponsors and **Mike Buster** has volunteered to be one and to find others. If you are willing to help train and monitor this young man please let Mike know.

New Meeting Room Location: As you know the university room in the biology department at ETSU's Brown Hall that we have been using for meetings for many years, 312, was

being used by a biology class this semester on Tuesday nights. So, we moved our meeting place to the second floor, room 223 in the same building. The room has all the same A.V. equipment, but is larger and the format is better for our meetings. We will continue to meet there for now and into the future. So, if you have not been to a business meeting since the New Year began, but are coming to the May meeting **we are in room 223**; not in the old meeting place in room 312. We will continue to meet here until such time as there is a conflict with another biology class.

Spring Fling: The George L. Carter Railroad Museum held its **SPRING FLING** at the **Longhorn Restaurant**, 2280 N. Roan St. on **Thursday, April 20, 2017**. At least 44 members' and their spouse/significant others, had a wonderful evening filled with socializing and good food. Most of us got to sit at the same large table, or very near to each other to enjoy each other's company. The service was excellent and we had a great number of choices, including some discounted meals, to select from. Before the evening was over many were talking about doing an **"October Fest"** at the restaurant this fall. Talk it over and let us know if that sounds good to you and we will begin to plan for it. It will most probably have to be on a Thursday night to avoid the crowds the restaurant normally has on Fridays and weekends. Our thanks to **Mike Buster** for making the arrangements for us and to **Jim Pahr's** for his preliminary work on this event.

Volunteers Needed in May: We shall need some volunteers on Tuesday, May 9th to open the Carter RR Museum for **ETSU President Noland** and the **University School's 5th grade class** that the president has been reading to. The group, along with some of their teachers, wants to tour the museum that morning from 9:30 to 10:30 and we will need 5-7 volunteers to have the layouts operating and provide the tour for this class. I will be in South Carolina teaching classes. The university's spring semester will end the week before with graduation on 6 May, so there should be no parking problems. Please Continue to let me know if you can do this. Thank you.

Operating Session #3: The MEMRR held its second operating session on the first Tuesday of April and the members present continue to work out the best practices to use to mimic operations of prototype railroads on our 24 x 44 foot HO layout. It will take a few such sessions to get everything squared away and everyone comfortable; but the fun has already begun. There are efforts to create some additional modules that can be erected during the operating sessions to provide more trackage and more interesting challenges for these events. The construction of these small additional modules will also provide opportunities for other members who are not module owners on the permanent layout to test their modeling skills in building a section of the layout of their own. Every member is welcome to participate

in these monthly operating sessions and the more the merrier; so mark the **second Tuesday in May** (this month only as these events are normally on the 1st Tuesday of the month) on your calendar and come to the Carter RR Museum around 5:30 p.m. for the set-up and beginning of the next session.

New Museum Exhibit: **Gary Emmert, Paul Haynes, and Fred** made a 3-day, 750 mile (each way) road trip to Jefferson City, MO to the home of the late **John Waite** April 7-9. John's wife, **Sharon Waite**, has donated his professionally created Sn3 model of the Cranberry Smelter/Furnace that was constructed by the ET&WNC RR in the Carnegie Section of Johnson City to convert the iron ore the little narrow gauge railroad was bringing from its mines in Cranberry, NC to our railroad museum. John Waite founded the ET&WNC RR Historical Society, authored *The Blue Ridge Stemwinder* that chronicles the railroad, and constructed a model of the railroad in Sn3 in the basement of his home. This generous donation of this historic complex will be a great addition to the ET&WNC RR HO3 layout we are constructing at the museum. We will plan to have a dedication ceremony in June when Mrs. Waite is here for the 28th Annual ET&WNC RR Historical Society convention. In addition, Sharon donated a number of John's railroad library books to the museum. When she is here in early June she plans to donate this collection of ET&WNC RR photos, papers and other memorabilia to the ETSU Archives of Appalachia to make them available in a permanent collection to any one researching this local narrow gauge railroad.

Gary Emmert, and others, will be moving that big module (approximately 11' 6" x 4'6") into the museum on May 9th. If they ask for help please lend a hand. We have some rebuilding/repair work to do from some damage to it that unavoidably occurred in the trailer during the long haul back to Johnson City. I will be spending the period of May 12-20 restoring and improving it with help from **Michael Paschall** and others who want to join us.

Train Show: **Roger Teinert**, chairman of the Big Train Show Committee, continues work with the committee's planning for the 2nd Annual Train Show scheduled for June 2-3 in the ETSU "Mini-Dome". Many vendors are already committed to come back this year and have helped us get many first-time vendors for a show that promises to be bigger and better than the successful event that was our inaugural attempt in June 2016. We will be asking for a lot of help in getting the show set up with the gathering and placement of hundreds of tables and chairs, the posting of signage, selling tickets, helping vendors and show visitors, and the many things that must be done to set up, conduct, and take down a big train show. Please plan on attending and helping us wherever you can. All the proceeds from the show go towards funding the Carter Railroad Museum. If you have train-related items you

would like to sell, we have plenty of tables for rent. If the club would like to have some tables it should consider having some club sales tables like you see at other train shows. Contact Roger Teinert if you are interested in helping out or becoming a "vendor" yourself.

Rail Excursion: The Carter Chapter NRHS has finalized their plans for their first rail excursion of 2017. On Saturday, June 24, charter buses will take folks from the ETSU campus to Knoxville to tour the Knoxville Locomotive Works diesel facilities. After that tour we will be transported to the depot for the 3 Rivers Rambler Railroad to ride behind steam eastward to the confluence of the French Broad and Holston rivers where the Tennessee River is born. Following the train excursion we will depart on the *Star of Knoxville* paddleboat for a 2-hour luncheon river cruise. This day trip has lots to offer and is an exciting fun-filled day. The cost is only \$90 per person (\$80 for children under 12). Ticket application and liability waiver forms will soon be on our websites and also available at the Carter RR Museum. Plan to bring the family and/or some friends and join us for this Museum-NRHS co-sponsored trip. **Bill Beagen** is the coordinator for this trip and all the paperwork for ticket applications and waivers of liability are going through him.

Story Telling Concert: ETSU's **Dr. Delanna Reed**, and her students, used many of the railroad stories she has helped the Carter RR Museum to collect over the years and with the help of some of her students presented a very successful concert of "Tales of the Rails" on April 7th. The hall was packed and those members of ours who attended the presentation had nothing but rave reviews of the event. Hopefully, there will be many more as way to continue to share our region's rich railroad history.

I attended the black tie dinner called **The President's Trust Dinner** at the Meadowview Conference Center on April 21st and was delighted that the theme of the dinner for all President Noland's special invited guests, which included members of the new ETSU Board of Trustees and many significant donors to the university, was railroading. Again, some of **Delanna Reed's** students told their railroad stories that we had gathered through our railroad museum and the ETSU Blue Grass and Ole-Time Music students played railroading songs. I really felt right at home and very proud of the initiative we started more than 9 years ago to capture these personal stories that would never have survived to be shared without our working to gather them. Thank you **Delanna** and **Carolyn Gregg**, and all the others, who gave us the contacts and brought us to the fine folks who had these personal stories of their railroad experiences in their heads waiting for a chance to tell them. Part of this collective effort was funded by an NRHS Heritage Preservation Grant that I was awarded several years ago. **Carolyn's** wonderfully edited

book, *Tales of the Rails*, has over 300 pages of these stories and we have copies for sale in the Carter RR Museum.

May Heritage Day: To help celebrate National Railroad Day our Heritage Event for May is “*Modern-21 Century Railroads*” on May 27th. Bring in your big diesels and their everyday rail consists and show the public how today’s railroads operate in miniature scales.

Wow! We are doing a lot and there are many exciting events, in and out of the museum to look forward to over the next two months. We have a great model railroad club and a terrific historical railroad society chapter in our museum and a wonderful affiliation with the ET&WNC RR Historical

Society. Don’t forget the **ET&WNC RR HS** will hold its **29th Annual Convention at the Carnegie Hotel on June 2-4th**. It’s not too late to become a member and to register for that historical convention celebrating the 100th birthday of combine #15, locomotive #12 and the Linville Depot.

Listen to the sound of the whistle of the train at night and dream of all the destinations yet to come.

Fred J. Alsop III

*President, Mountain Empire Model Railroader
Director, George L. Carter Railroad Museum, ETSU*

G.L. CARTER RAILROAD MUSEUM COORDINATOR’S MEETING APRIL 13, 2017

Meeting called to order by Fred Alsop in Campus Center Building Room 235 at 6:05 p.m. Coordinators present: Mike Baker, John Carter, Jim Hoit, Roger Teinert, Gary Gilliam.

Large Scale: Mike Baker. Everything is running fine. Mike is making a list of duplicate numbers on G-Scale rolling stock and will check with Mike Buster to see if he can change the extra numbers. He has been maintaining the locomotives and they are okay.

HO –scale MEMRR layout: John Carter. The crossover on Gary Gilliam’s 4 ft. module has been installed and is working. Frank Fezzie wired it. Frank also repaired a dead electrical section in the yard and he is soldering loose wiring beneath the yard.

RIP Track: Jim Hoit. Our new storage cabinet is full and ready for use on the HO-scale layouts. Locomotive and rolling stock inventory is up-to-date. All of Pete Morrisett’s donated cars have metal wheels installed.

Train Show: Roger Teinert. The Train Show Committee will be meeting April 17th at the ETSU Market Place. They will be making signage decisions with a budget of approximately \$1,500 for locally produced signs, placards, and banners. More than 100 vendor tables have been sold. We have a contract with Hobie for radio interviews and commercials at the Elizabethton station. We still have a potential bathroom issue in the Mini-dome on the first floor and will discuss this with ETSU administrator, Kim Young.

Locomotive Repair: Gary Gilliam. All the HO and N-scale locomotives are in good working order. There continues to

be some difficulties with the HO_n3 Train & Trooper brass locomotives that have electrical problems and design problems, but he is working to solve them. He will be installing DCC and sound into the HO_n3 0-4-0 Porter locomotive recently purchased for the ET&WNC RR layout.

General Announcements: Fred Alsop.

- The new library in CCB 101 is essentially complete. Duane Swank will install shelving in the stand-alone book case and Gary Emmert and Dean Smith will complete the movement of books into the room. Paul Haynes is still working on the drawers for the DVD cabinet.
- Fred will discuss the space currently occupied by the ETSU Radiologists as additional space for the RR Museum with President Noland.
- Gary Emmert, Paul Haynes and Fred traveled to Jefferson City, MO and brought back the donated Cranberry Furnace in Sn3-scale from the late John R. Waite’s ET&WNC RR layout. His wife, Sharon, assisted by Michael and Ann Paschall and Chris Ford, helped with the removal of the large module from the home into our trailer for transport.
- Jim Pahr has asked that the museum stay open with the help of our volunteers for his Presbyterian church group who want to visit around 3 p.m. on Saturday 22nd.
- Fred reminded the group that ETSU’s President Noland wants to bring a 5th grade class to the museum on the morning of Tuesday, May 9th from 9:30-10:30 a.m.

There being no further business, the meeting was adjourned at 6:45 p.m. Minutes taken and prepared by Fred Alsop in the absence of the MEMRR secretary.

MOUNTAIN EMPIRE MODEL RAILROADERS

THIRD OPERATING SESSION

TUESDAY, MAY 9 2017



5:30 PM – SETUP AND JOB ASSIGNMENTS
 6:30 PM – OPERATION SESSION BEINGS
 9:00 PM – WRAP-UP AND BULL SESSION

On the first Tuesday of each month starting in March 2017 Mountain Empire Model Railroaders will sponsor an Operating Session at the George L Carter Railroad Museum. Club members will use the MEMRR Club HO layout in the Fred Alsop Gallery along with club locomotives and rolling stock.

Those attending will be randomly assigned job duties including:

Dispatcher/Trainmaster

Engineer/Conductor Brakeman

Hostlers

Assignments will include:

Classification Yard

Steam Facilities and Roundhouse

Passenger Trains

Mixed Trains

Diesel Facilities and Transfer Table

Local Switcher

Priority Trains

Radios and headsets will be used for communications using everyday language. Simplified train orders will govern train operations.

PLAN ON JOINING THE FUN
PREREGISTGERING IS NOT REQUIRED
BUT LET US KNOW IF YOU PLAN TO ATTEND