



THE SIGNAL BRIDGE

NEWSLETTER OF THE MOUNTAIN EMPIRE MODEL RAILROADERS CLUB

MAY 2012 - MEMBERS EDITION

Volume 19 - Number 5

Published for the Education and Information of Its Membership

CLUB OFFICERS

President:
Fred Alsop

Vice-President
John Carter

Treasurer:
Duane Swank

Secretary:
Hobie Hyder

Newsletter Editor:
Ted Bleck-Doran

Webmaster:
Bob Jones



LOCATION

ETSU Campus
George L. Carter
Railroad Museum

HOURS

Business Meetings are held the 3rd Tuesday of each month. Meetings start at 7:00 PM in:

Brown Hall
Room 312
ETSU Campus,
Johnson City, TN.

Open House for viewing every Saturday from 10:00 am until 3:00 pm.

Work Nights are held each Thursday from 5:00 pm until ??

THE VIEW FROM THE ENGINEER'S SIDE OF THE CAB:

By the time you are reading this another semester at ETSU will have ended and the class of 2012 graduated. The university has many fewer students during its summer sessions and parking around the Carter Railroad Museum should be much easier to access. The Visitor Parking Passes you now have state they will expire on May 15th. I have checked with the Director of Parking for the university and he tells me they will remain valid until August (no new passes just for summer), so keep the one you have and display it if you are parking on campus before 3:30 p.m.. Remember, it is only valid in legal parking places which does not include fire lanes, handicapped spaces, service vehicle spaces, etc., all of which are clearly marked.

Twenty-three of you purchased the DVD produced by **David Carrie** for \$10 that featured the Carter Legacy and several tracks shot in the Carter Railroad Museum. As many of you know this initial disk was mastered with a few flaws in it. David has produced replacement copies and we have been distributing them, free of charge, to replace your original defective ones. If you have not gotten your copy replaced please let me know and I'll see that you get a new one. We will have additional copies available in a few weeks that will also carry closed captioning. So, if you don't have a copy of this excellent DVD they will soon be available again for purchase and I plan to have them available for sales in the museum as a fund raiser. We hope to have copies to sell at public events including those that are coming up in June and July.

With the end of the semester and the academic year at the university I will be "on the road again" conducting my annual bird identification workshops during most of the month of May. I will be working in South Carolina, in west Tennessee and in Georgia the first 3 full weeks of May and only back "home" on weekends. So, I will be in the museum most Saturdays, but absent on Thursday work nights and will miss the May meetings. **Jim Pahr** has volunteered to preside over the May Coordinators Meeting and Vice-President **John Carter** will conduct the May business meeting of the MEMRR in my absence. When June rolls around I'll be back on my regular schedule at the museum and with the club.

The MEMRR has two public events to plan for and to man that will involve the display of the Cope Traveling Layout. We now have a 6 x 12 trailer to haul the layout and additional materials/supplies to these showings and **Duane Swank** has agreed to take the trailer to his house to get the inside outfitted to make the transportation of the Cope layout easier and the ride more secure for it. **Jerry Dennis** has been working on the problem switch machines under the layout and has replaced all the defective ones, so it is now operating well. We need several volunteers to get the layout's scenery face-lifted so it looks fresh and well maintained for its upcoming public showings. This will have to be accomplished in May as we are at the **Johnson City Blue Plum Festival on June 1, 2 & 3rd, and at Jonesborough Days June 29, 30 & July 1st**. We will need plenty of volunteer help to man the layout and to interact with the people who come to see the layout and to visit. These events provide excellent opportunities to promote our club, the railroad museum and our hobby and to recruit potential members. Please mark your calendars and volunteer to spend some time at each event representing the club.

Jim Pahr will be traveling to meetings in Chicago in early June and will return with the large library of approximately 450 railroad books donated to the Carter Railroad Museum by Reverend Howard Walker. Our Librarian **Gary Emmert**, **Dave Doughty**, and **Bob Jones** have done an outstanding job getting all our donated books, magazines, VHS tapes, and DVDs catalogued and on the library shelves. They may need some help handling the large influx of new books that are about to come our way.

Hobie Hyder is putting together the details of a modeling contest that will be open to the public. He plans for the event to begin this summer and if you have suggestions for the contest design he would welcome some help with the planning. The contest will focus on weathering of various model railroad items and he plans to have prizes for winners. Winners in each category will be decided by votes from the public.

The Southeastern Region of the National Model Railroad Association (NMRA) will have its convention in Gatlinburg June 1-3, 2012. The Glenstone Lodge will be the convention hotel. The convention is called "Tracks to the Smokies" and you can visit the convention website for more information at <http://www.ser-nmra.org/convention/2012-gatlinburg-convention>

The ET&WNC RR Historical Society Convention will be held June 15-17 in Banner Elk, NC. Direct questions to Jerry Turbyfill at jerryturbyfill@gmail.com

Our sister chapter, the George L. Carter Chapter NRHS, has its first railfan excursion planned for June 16th. For only \$55 (less than it will cost you to put gas in your ole jalopy and drive there yourself) you can board a modern Greene Coach Lines bus on the ETSU campus and be driven to Stearns, KY and ride the Big South Fork Railway and have admission to their historical museum. **ALL THIS FOR \$55!!!!** Tickets will go fast, the public has been invited and we expect the 55 seat bus to fill in a hurry. Get your tickets

and bring the family and friends and don't miss this fun-filled railfan excursion. **See details elsewhere in this issue.**

Our Heritage Day Event for May 26th is "Here to Stay-Modern American Railroading" in honor of American Railroad Day. This is your opportunity to get the modern fleet of Amtrack or your favorite railroad's big haulers out, the unit trains and the container fleets and show them off to the club members and our visitors. Consist those multi-engine lash-ups and no cabooses, just tail-end freight cars with flashing FREDs. Bring them on!

Check out the April Coordinators Meeting report in another section and see all that our various groups have been doing to continue to improve our exhibits and our layout operations. There is something for everyone to do, no matter what your interest or your skill level. Come on down to the Carter Railroad Museum on Saturdays and run your favorite trains, or try out some of the club's hardware. Meet us around 4:30 any Thursday with you work clothes on and bring your tool kit and join in the exhibit work and improve your model railroading hobby skills. There is a lot going on with the MEMRR and the Carter Railroad Museum. Come be a part of it and learn with us.

Listen to the whistle of the train in the night and dream of all the destinations yet to come.

Fred Alsop

*President, Mountain Empire Model Railroaders
Director, George L. Carter Railroad Museum, ETSU*

Mountain Empire Model Railroaders Minutes - Coordinators Meeting Thursday, April 12, 2012

Meeting called to order at 6:00 p.m. EDT in room 235 Campus Center Building, ETSU by President Fred Alsop.

Announcements:

1. The donated Brenda Woods HO layout will be moved from storage at Stowaway Storage on Browns Mill Rd. to The Regional Train Center to be stored by Gary Cameron on either Monday or Tuesday (16th or 17th). Bill Hensley will furnish the truck and the trailer. Volunteers will be sought to help with the move.

2. The George L. Carter Chapter NRHS as arranged a rail fan excursion to the Big South Fork RR in Stearns, KY leaving ETSU on June 16th. Cost will be \$55 for adults. Details will follow.

3. Plans will be made to move the donated Z-Scale layout from Tod Eaton's basement to Gary Emmert's home for

storage and repair. Bill Hensley will use his truck and trailer for the move and James will lead with repair and restoration. This group will coordinate the move and will need volunteer help.

4. There is a child's birthday party scheduled at the RR Museum for Saturday, 28th. Fred will be out of town and Jim Pahris has volunteered to be in charge of the decoration for the party. Volunteers who can come in around 9:00 a.m. that day are being sought.

5. Rev. Walker library to be moved to RR Museum the first week of June. The Reverend is donating his library of 450+ books. Jim Pahris will make arrangements for packing and pickup of the library in conjunction with a planned business trip to the Chicago area.

6. Seniors from Jonesborough Senior Center to visit the Carter Railroad Museum on Thursday, May 10th from 9:30 to 10:30. We need some MEMRR volunteers to come and operate the museum for this visit. The university will end its spring semester on May 5th with graduation and parking should not be a problem.

Displays (Jim Pahrts): Displays were not changed out in March. New displays are scheduled to go in Thursday night, April 26th. Yankee Trains of the northeast will be featured. Bob Jones has volunteered to help Jim and Geoff Stunkard with the displays.

Cope Traveling Layout (Gary Emmert [absent. No report]): The Cope Layout must be readied for the Blue Plum Festival in Johnson City the first weekend in June and for Jonesborough Days June 29th to July 1st. Jim Pahrts has donated a layout shell for an N-Scale layout that could be built to join the Cope Layout as a traveling display for the Club and the RR Museum. Anyone interested in taking on this project please let Fred know.

Large Scale Layout (Jesse Kittle): Fred Alsop donated a locomotive w/tender, 4 coaches, and a track-cleaning car in G-Gauge. Jesse will get them operating on the layouts.

N-Scale Layout (Tod Eaton [Jesse Kittle reporting]): The short trolley line on the Bankus layout is now operational. May wish to purchase new trolleys for it. Some track is scheduled for ballasting; curves need to be straightened with wider radius, but that will necessitate a possible layout shutdown for several weeks. Problem is still under consideration.

HO Yard (John Carter): Turnouts being installed with 6 more in place. John wants to work on some night(s) other than Thursday nights on the building of the new freight yard and will send out emails informing the membership of which nights he will be working and seeking volunteers to help with this big project.

HO Electrical (Bill Hensley): Two feeders on the bridge have been cutover to the new busses. His crew will complete cutovers soon. We need batteries in the throttles for power. The tortoise machine order is back-ordered, but the remaining electrical supplies should be shipped in a matter of days. One PSX4 is dedicated strictly to the yard along with its boosters. The yard will be split in half electrically.

The equipment will be moved from its present location to the "Dispatcher's Station" near the computer.

Events (Hobie Hyder): Blue Plum Festival, Johnson City, June 1-3rd. We are scheduled to occupy a 20 x 20 foot gazebo near the Blue Moon Dinner Theatre beginning at 9:00 a.m. on Friday, June 1st. Cope Layout will be displayed. We may need a tarp to cover the layout in case of rain. Volunteers are needed for all 3 days.

Hobie is planning a modeling contest that will be open to members and the public. Prizes will be given and contest plans are being formulated. See Hobie if you are interested in being on this planning committee. The contest is planned for the RR Museum this summer and the museum's visitors will select the winners with their ballots. This contest will be an agenda item for discussion at the April MEMRR business meeting.

WebMaster (Bob Jones): Bob is updating the club website including background visuals for the site. He asks the club/members to update photos of club and member's modules to give fresher look to our modules. NRHS chapter news is now on the website. The June rail fan excursion will be posted there for detailed information. Bob requests that Heritage Day Event information be sent to him for posting. He will also post the volunteer sheet for Saturdays following each month's business meeting. Bob will send an updated membership list to the treasurer and the president.

Sales (Duane Swank): The club needs to order hats, but the treasurer is waiting until the other financial obligations have been settled and more income is on hand.

There being no other business the Coordinators Meeting was adjourned at approximately 7:20 p.m.

*Reported by Fred Alsop, President
Mountain Empire Model Railroaders.*

Mountain Empire Model Railroaders Minutes - Business Meeting April 17, 2012

President Fred Alsop called the meeting to order at 7:05 P.M. in room 312 Brown Hall, ETSU, with 20 members present and one guest. New member Thomas Knisley was recognized by President Alsop. Cody Cagle, a guest of Don Ramey, was also recognized and welcomed back by President Alsop.

President Alsop called for the approval of the Secretary's report from the March meeting. A motion was made by

Jerry Dennis and a second by Paul Haynes to except the report as published in *The Signal Bridge*. The minutes were approved by a unanimous vote. In the absence of Ted Bleck-Doran, Newsletter Editor, President Alsop reminded the group they could mail any pictures or articles to Ted for publication in *The Signal Bridge*. Duane Swank, Treasurer, reported the club's checking account balance as of April. Webmaster Bob Jones informed the group that he is in the process of updating the members list and an updated copy will be posted on the club's website soon. Bob also told the group that he has added a "How to Model the ET&WNC" feature to the club's website. In the absence of John Carter, Vice President, President Fred Alsop reported that the programs for the next two months are covered.

President Fred Alsop reported to the club that Amanda Kelly has been hired as the Station Master for the Little Engineer's Room and that she was working out really well. President Alsop further reported to the club that the Carter Chapter NRHS and the Carter Railroad Museum has scheduled an excursion on June 16th to The Big South Fork Scenic Railway in Sterns, KY. Cost of the trip will be \$55 per person and will include bus transportation by Greene Coach and tickets to ride the train and attend the museum. One bus has been reserved to date with a capacity of 55 people. The bus will depart from parking lot #22A at ETSU at 7:00 A.M. Anyone wishing to go is asked to meet at 6:30 A.M. the morning of June 16th. Printable reservation forms and liability waivers for the trip are available on the club's website, as well as additional information for anyone wishing to go. Volunteers were requested by President Alsop to help with sitting up for a children's birthday party on April 28th. Everyone who was involved with the moving of the Brenda Woods' layout was thanked by President Alsop. Currently, President Alsop is in the process of doing the paperwork donating the layout to the Southeast Regional Train Museum. Lastly, President Alsop reported that the new HVAC system for the ET&WNC display room, the large workroom and Little Engineers Room is up and working.

Old Business: In the absence of Vice-President/HO Layout Coordinator John Carter, Chris Ilderton, Co-Chair of the Running Session Committee, reported that any further progress on running sessions was dependent upon completion of the new yard. A completion date of October 2012 was voted on and passed at the March meeting by the membership. Bob Jones, Webmaster, stated that he would be happy to forward any communication from John to the membership regarding extra work nights to complete the new yard.

In other Old Business, Bill Hensley, Wiring Coordinator, reported to the club that all of the electrical items for the new HO yard had come in with the exception of the tortoise switch machines which are on backorder. He asked the club for help with the wiring. Anyone wishing to help Bill is requested to e-mail him or show up on Thursday evenings.

The first advertisement for *Items for Sale by Members* was published in the March issue of *The Signal Bridge*. Creator Duane Swank informed the membership that all the items listed were his except for one item. For the May newsletter, he will only list four of his items for sale, in an effort to save space and postage in *The Signal Bridge*. Anyone wishing to place an advertisement in *The Signal Bridge* for items for sale must get them to Duane before the 25th of each month. Deadline for all items to be published in *The Signal Bridge* is April 4th.

The last item of Old Business was the discussion of the Modeling Contest approved at the March business meeting. The idea to open the contest to the public was discussed by Hobie Hyder, Secretary/Creator of the Contest, with a request for a motion to adopt this idea. Jerry Dennis made such a motion with Dan McLeod seconding. Motion passed. Hobie is to work out the final details of the contest and make a copy available to President Alsop for review ASAP.

New Business: Jim Pahrts will be changing out the display cabinets Thursday, April 26th. Anyone with items pertaining to the Heritage Day theme of *Yankee Railroads* is requested to bring their item(s) to the museum for display on April 26th or contact Jim Pahrts. The next Railroad Heritage Days will be Saturday, April 28th. The theme will be *Yankee Railroads*.

To save time, President Fred Alsop told the membership that the full text of the April Coordinator's Meeting will be published in the next issue of *The Signal Bridge*. Secretary Hobie Hyder, in other New Business, asked if someone would be willing to hold a "how to" session on using DCC. President Alsop agreed with the idea and scheduled a "how to" session for Thursday, April 19th at 6 P.M. at the Carter Railroad Museum.

Bob Jones, Webmaster, reported that an updated library inventory list will be made available soon to the membership. You can go to the club's webpage or Google to see available inventory; however, the library will be closed to the public. Duane Swank, Treasurer, will be adding an Excel File to the office computer to help with inventorying new items. Bob will include a section on *How to enter books for dummies* on the club's website. Gary Emmert, Librarian, and Dave Doughty will help with cataloging books and new items. The library will soon be receiving approximately 450 railroad related books from Reverend Howard Walker. Gary Emmert has purchased via the Carter Railroad Museum a new larger cabinet for DVD's for the library from Big Lots.

Replacement CD's for anyone who purchased the George L. Carter DVD from David Curry will be made available by President Alsop at no additional charge. If you have not received your replacement CD, please see Fred. A reprint of a book by local author Johnny Graybeal entitled 'Railroads of Johnson City' will be made available for purchase to the membership by President Alsop. Members interested in purchasing a copy of this book are requested to contact Fred.

Before being adjourned, President Fred Alsop asked for Volunteers for Saturdays' Operating Sessions. Don Ramey then presented his program *How to install DCC in non-DCC ready locomotives*. The May program will be announced. Meeting was adjourned at approximately 8:45 P.M. Next

meeting will be Tuesday, May 15th at 7:00 P.M. in room 312 at Brown Hall, ETSU.

*Respectively submitted,
Hobie Hyder, Secretary MEMRR*

ETSU's Railroad Museum and National Railway Historical Society Sponsor Scenic Train Excursion

JOHNSON CITY — The George L. Carter Chapter of the National Railway Historical Society and East Tennessee State University's George L. Carter Railroad Museum will sponsor a scenic train excursion on the Big South Fork Scenic Railway on Saturday, June 16.

The tour will follow the former Kentucky & Tennessee Railway route in a 16-mile loop into the Daniel Boone National Forest and the Big South Fork National River and Recreation Area. The train will descend 600 feet into a gorge before stopping at Blue Heron Coal Mining Camp, a National Park Service outdoor interpretive site.

The excursion begins in historic Stearns, Ky. In the early 1900s, Stearns Coal and Lumber Company built the town of Stearns to serve as the hub of a logging and mining empire spread over 200 square miles. The company built the Kentucky and Tennessee Railway, erected the first all-electric sawmill in the country and employed over 2,200 people in 18 coal and lumber camps.

The Kentucky and Tennessee Railway once operated 12 steam locomotives on 25 miles along the Big South Fork River valley. The line carried timber and coal, as well as workers and supplies going to camps along the line.

The company sold its mining operations to Blue Diamond Coal Company in 1976 and transferred its thousands of acres to Boone National Forest, the Big South Fork National River and Recreation Area, and private ownership.

The price for the excursion is \$55 for adults and \$47.50 for children. The fee includes the roundtrip bus fare to Stearns, Ky., the train ride and admission to the McCreary County Museum.

Passengers should arrive at ETSU's parking lot 22A on Jack Vest Drive by 6:15 a.m. and be on the bus at 6:45 a.m. for departure promptly at 7 a.m. No refunds will be given for those who do not arrive in a timely manner.

Lunch may be purchased at Coal Bucket Concession in Blue Heron or restaurants in Stearns. Participants may choose to take food in a carry-on cooler small enough to fit under a seat.

Ticket order forms are available at the Carter Railroad Museum on Saturday mornings from 10 a.m.-3 p.m. or online at the Mountain Empire Model Railroaders website at www.memrr.org by choosing "NRHS News" and then "Ticket Order Form."

Payment may be made by check or money order made out to the George L. Carter Chapter, NRHS and mailed to Duane Swank, Treasurer, 1763 Sylvan Hill Road, Elizabethton, TN 37642.

From the George L. Carter RR Museum Library New DVDs are Available

Time has not allowed for a review of these new acquisitions. Expect reviews to following the upcoming pages of the *Signal Bridge*. In any event plan to check these out for a viewing:

- Chicago Steam Celebration
- Kansas City Southern Highlights: "Straight as the Crow Flies"
- Classic Chicago Railroading
- Milwaukee Road #261: Rebuilding Run"
- Giants of Steam: DM&IR Yellowstones
- Today's Chicago Railroads
- Coal Rides Again
- B&O Odyssey
- Wheels A'Rolling
- B&O/C&O Steam Power
- Runnin' That New River Train
- California Zephyr
- Machines of Iron: The Ace of Black Diamonds
- Classic: The Century of New York Central
- The Wabash Railroad
- Historical Features of the Pennsylvania Railroad: The Susquehanna Division
- Steam Across America: Vol 1 The East
- Steam Across America: Vol 2 The West
- No. 261: New River Adventure
- Sacramento Steam '99: Disc 1
- Sacramento Steam '99: Disc 2
- Susquehanna 142 Delivered
- The Rock Island Line
- The Milwaukee road
 - Electric Power
 - Harlowton to Butte

- Rocky Mountain Division
- All Aboard Vol I
 - Sante Fe
 - Pennsylvania Railroad
- All Aboard Vol II
 - Canadian Steam in the 50's
 - Illinois Central the 50's to the 80's
 - Steam in the 50's
 - Today's Norfolk Southern
- All Aboard Vol III
 - Colorado Steam
 - East Broad Top
 - Rails Chicago
 - Amtrak's California Zephyr
- All aboard Vol IV
 - Empire Builder
 - ChamaTurn
 - Michigan's Fallen Flags
 - Suwanee 1218
- All Aboard Vol V
 - 1964 Jan Juan Passenger Special
 - Steel City Rails
 - Shorelines & Steam
 - Rock Island 50's to the 70's
- All Aboard Vol VI
 - Today's Union Pacific
 - Detroit, Toledo & Ironton
 - Private Varnish
 - Narrow Gauge Mikados
- All Aboard Vol VII
 - Florida East Coast
 - Rockets and Rails
 - Early Diesels of St Louis
 - Railroads of Atlanta
- Golden Age of Steam: Steam in the Spring
- Golden Age of Steam: Steam in the Summer
- Golden Age of Steam: Steam in the Autumn
- Golden Age of Steam: Steam in the Winter

NORFOLK SOUTHERN PREPARES TO INSTALL NEW SIGNALS

Norfolk Southern is replacing its block signals throughout the area. The new signal masts feature a deeply shrouded light hood. The photos were taken from the grade crossing on Spring street in Jonesborough.



NS Grade Crossing in Jonesborough



New Signal Mast with Control Box Integrated



Older Installation of Relay Box



Old and New Side By Side



Signal Mast to be Replaced

NORFOLK SOUTHERN'S HERITAGE PAINTS
ADDITIONS TO THE GALLERY



#8104 LEHIGH VALLEY



#8105 INTERSTATE



#8102 PENNSYLVANIA



#8103 NORFOLK AND WESTERN



#8114 NORFOLK & SOUTHERN



#8101 CENTRAL OF GEORGIA

MEMBERS ONLY BULLETIN BOARD
TRAIN RELATED ITEMS ONLY

MEMBER	PHONE	ITEM FOR SALE	PRICE
Duane Swank	423-542-8989	NEW-Bowser- N&W box cars-3 different numbers-each unit priced	\$ 15.00
Duane Swank	423-542-8989	NEW-Bowser- N&W hopper cars-8 different numbers-each unit priced	\$ 15.00
Duane Swank	423-542-8989	NEW-N&W heavyweight passenger car set of 8	\$ 80.00
Hobie Hyder	423-213-4067	NYNH&H - tongues. Approx. 3' long. Made in Hartford, Connecticut shops OBO	\$ 75.00

1-3 ITEMS FOR SALE—FREE

4-7 ITEMS FOR SALE—\$1.00

8-11 ITEMS FOR SALE—\$2.00

EACH ITEM OVER 11—\$0.25 EXTRA

PROCEDURE FOR RUNNING ADS

EACH MEMBER TO SUBMIT THEIR AD ALONG WITH THE APPROPRIATE AMOUNT OF MONEY TO

DUANE SWANK

1763 SYLVAN HILL RD

ELIZABETHTON, TN 37643

IF AD IS NO MORE THAN THREE ITEMS, THEN E-MAIL THAT LIST TO duaneharriet@charter.net

I WILL COMPRISE THE LIST BY THE 25TH OF EACH MONTH

THEN THE LIST WILL BE SUBMITTED TO THE EDITOR FOR PUBLICATION IN THE SIGNAL BRIDGE BY THE FIRST OF THE MONTH

IF YOU HAVE MULTIPLE LIKE ITEMS, THEY CAN BE LISTED AS ONE ITEM

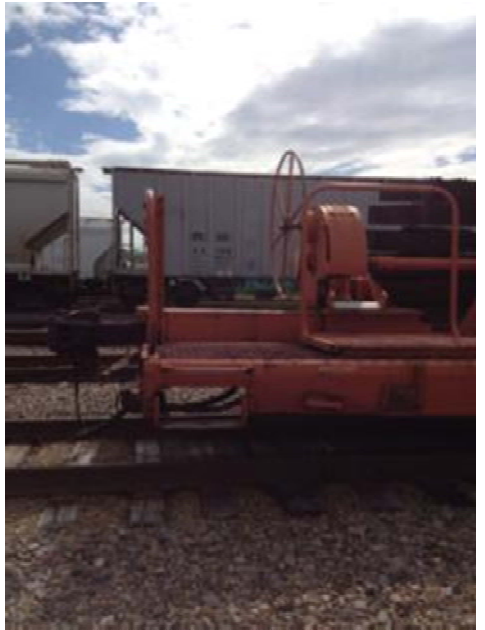
From The Camera of Paul Haynes
As Seen In Kingsport TN



CSX 914208 Scale Test Car



Prefabricated Turnouts on Special MOW care



Another Historic Paint Appears

The Illinois Central Railroad lives in the Hearts and Souls of MANY!

Three cheers for Ed Ellis (former ICRR employee) and the IOWA PACIFIC RR!





Union Pacific 942 EMD E8 Locomotive



Union Pacific 942 is a streamlined diesel-electric locomotive, designed for fast, efficient pulling of passenger trains over long distances. It is an "E-unit", a standardized design first produced in 1937 and continually improved over 25 years through 10 model variations. E-units were the most popular passenger-service streamlined diesel locomotives in the U.S. (in terms of numbers produced). For three decades, E-unit powered streamlined passenger trains were the quintessential symbol of railroading in this country.

History

This engine was built by the Electro-Motive Division (EMD) of General Motors Corp. in May 1953, as an E8-A locomotive: an E-unit of the 8th model variation (2250 horsepower, later upgraded to 2400 hp), designated "A" because it is a leading engine with cab (compared to boxy non-cab "B" trailing engines). It was part of an order of 17 E-8As for the Union Pacific (UP) system.

The Union Pacific placed the E-8s in their general passenger service pool, and in general used them to replace older steam and diesel engines. One of the UP 942's more glamorous assignments was as one of several engines pulling the famous streamliner *City of Los Angeles* on runs between Chicago and Los Angeles. This notable train used streamlined locomotives and cars, all painted in the distinctive UP colors of Armour yellow with red stripes, and carried politicians, business magnates, and Hollywood stars between the cultural centers of the Midwest and Southwest.

After 19 years of service on the UP, locomotive 942 was sold to a railroad equipment dealer in Chicago in 1972, and then resold to the Chicago & North Western Railway (C&NW). The C&NW renumbered the locomotive C&NW 510, and used it in Chicago-area commuter train operations. This service was taken over by the government agency Metra, including this engine. The engine was retired in 1988, and ended up in a railway salvage yard in Colton,

California.

In 1995, the Museum raised the funds to purchase the locomotive. With the help of the salvage yard and several railroads and railroad shops, many necessary repairs were made on the engine and it was moved to Perris in June 1997. The locomotive operated at the Museum regularly through 2009 when it was sidelined by a main generator failure.

The locomotive returned to service in April 2012, following repair of the failed main generator, extensive bodywork, and repainting it to its full Union Pacific colors.

Acquisition of UP 942 was made possible by a generous gift from William Podlich

Restoration of UP 942 was funded by a generous gift from Enrico Bianchini.

Technical Data

Type	Diesel-electric, type E-8A
Builder	General Motors, Electro-Motive Division
Date built	May 1953
Overall configuration	Streamlined cab-unit, with two six-wheel trucks
Weight	316,500 pounds
Engines/cylinders	Two 2-cycle 567-B diesel engines, 12 cylinders each
Power transmission	Two 600-volt generators
Horsepower	Originally 2250 horsepower, upgraded to 2400 hp
Dimensions	Length 70'3"; height 14'10.5"; width 10'8"
Maximum speed	117 miles per hour

Additional Photos



942 on an OERM Pumpkin Train to Hemet in October 1997.



Another scene on the 1997 Pumpkin Train



942 in service in the 1960s, photographer unknown



UP 942 at the head of an all-UP consist during the UP employee appreciation picnic 5-9-09





942 meets PE 1299 on the Museum mainline, March 2005



Jack Lofgren photo 1979 OERM Collection



In Chicago commuter service, 7/20/82. Leon Kay photo



Undergoing Restoration

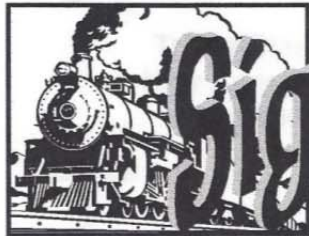


Council Bluffs ID 11-14-89 Orange Empire Railway Museum Collection



Restoration Complete

BLAST FROM THE PAST
March 1999 *Signal Bridge*



Signal Bridge

A Publication of
Mountain Empire Modular Railroaders
(423) 282-9064



Vol. 6

March, 1999

No.4

At Last Month's Meeting

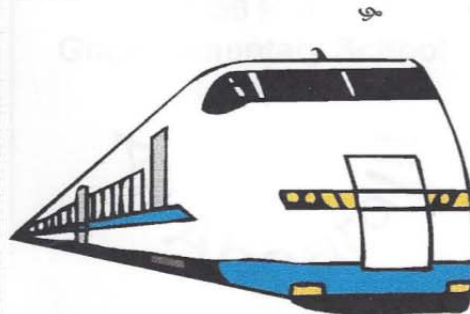
At the February meeting many loose ends from former meetings were tied together. Action was taken to purchase the locomotives offered by Hugh Van Male dating back to last May. Hugh made a last minute alternative offer of two GP-9s instead of the GP-18s if the club preferred. After inspection of both sets of locomotives, the membership voted on the set of two GP-9s over the GP-18s. The asking price of \$80.00 for the two N&W Proto 2000 GP-9s was paid in cash and will be available to all members at future shows. It is hoped that these two units will reduce the necessity of individual members placing excessive wear on their units.

The second item of discussion concerned the new central staging yard developed by Bob Helm and several new members. Unfortunately the secretary, in a rush to get to the meeting, left Mr. Helm's statement in his hobby room and was unable to report the bottom line to the club at that time. However, below, is a transcription of that statement:

Quant	Item	Unit Pr	Pr
18	Atlas Switches	\$7.95	\$143.10
12	Ground Thro	2.38	28.56

80	Atlas C.83	2.35	188.00
12	Min Tog Sw	2.50	30.00
4	Molex Conn	1.69	6.76
TOTAL			\$396.42
			- 125.00
			271.42

Other discussion centered around the clearing of this debt and the construction of the small portable display for long distance or shows where a smaller area would be available.



Financial Standings

Balance as of 2/5/99	\$110.08
Income:	
Contrib.	\$236.00
Total In	\$236.00
Expense:	
Postage	\$6.60
Hugh Van Male	80.00
Total	\$86.00
Balance as of 3/7/99	\$266.08

Trains Classic A New Annual From Kalmbach

The people at Kalmbach Publishing in Waukesha, WI have launched a new annual publication this month with the publication of the first edition of *Trains Classic*. This is not just reprints from the pages their monthly railroad news magazine *Trains*, but a totally new publication with original stories and photographs from the "Golden Days of Rail Travel". The premier edition contains articles on the FT diesels of the Santa Fe, a first hand report on firing a classic Pennsy T-1 on the old Fort Wayne Division and how not to scoop from track pans, the B&O home built Mountains and even an article on the last interurbans.

As a regular reader of *Trains*, I eagerly awaited the new annual after being completely satisfied with the publisher's last two annual publications *Great Model Railroads* and *Model Railroad Planning*. The new offering by the Kalmbach group appears to be of the same high quality railfans

and modelers have come to expect from the people at Waukesha. The photography is exceptional and the variety of writing styles present a cornucopia of railroading knowledge and adventure. If you enjoy the transition era and earlier steam railroading, you will enjoy this new publication.

Hope To See Everyone
 Thursday Evening
 March 11,
 7:30 P.M.
 Gray Elementary School
 Gray , TN
 All Aboard!!!

Mountain Empire Modular Railroaders

1203 Woodside Drive
 Johnson City, Tennessee 37604