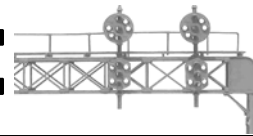


# THE SIGNAL BRIDGE



Volume 15

NEWSLETTER OF THE MOUNTAIN EMPIRE MODULAR RAILROADERS CLUB  
FEBRUARY 2008 ISSUE

Number 2

## CLUB OFFICERS

### President:

Fred Alsop

### Vice-President:

John Carter

### Secretary:

Mary Doran-Bleck

### Treasurer:

Duane Swank

### Newsletter Editor:

Ted Bleck-Doran

### Webmaster:

John Edwards

## LOCATION

ETSU Campus, George L.  
Carter Museum

## HOURS

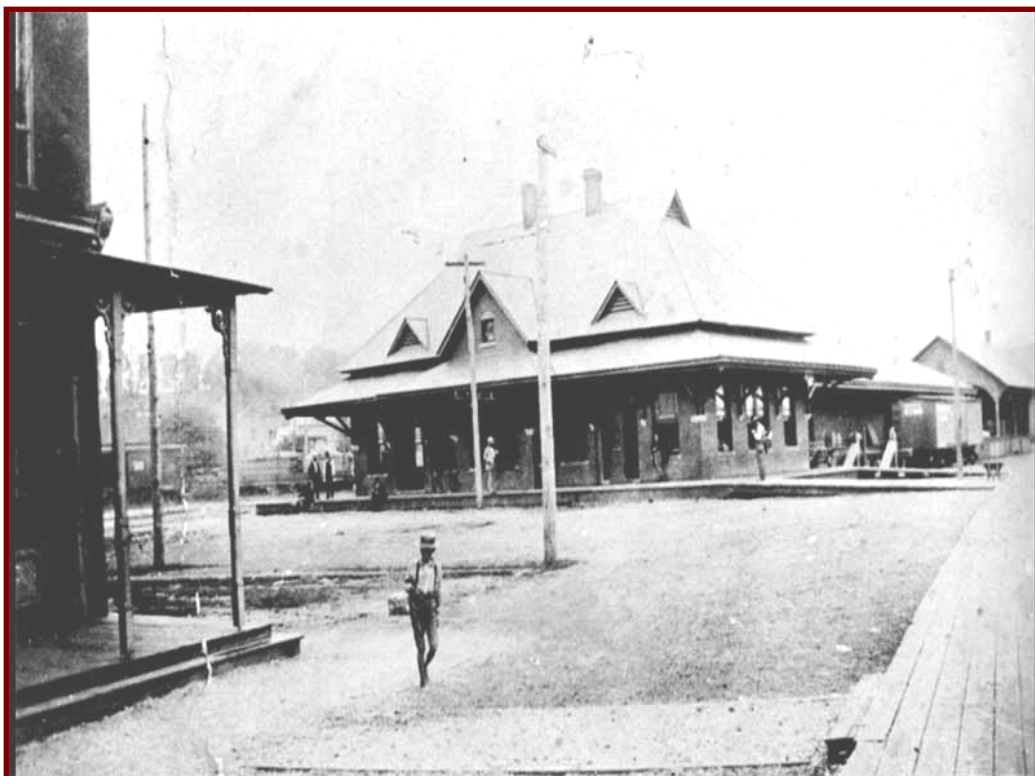
Business Meetings are held the 3<sup>rd</sup> Tuesday of each month. Meetings start at 7:00 PM at ETSU Campus, Brown Hall Science Bldg, Room 312, Johnson City, TN.

- A social gathering is held prior to the business meeting at *EL TORITO* on State of Franklin near ETSU in the Kroger Plaza starting at 5:45 PM. Visitors and those interested in joining MEMRR are invited to attend.

- Work nights are held weekly on Thursday evenings starting at 4:30 PM and lasting until ???

- Open viewing and operating layout is available every Saturday from 10:00 AM until 3:00 PM.

## From the Conductor's Desk:



The ET&WNC connected to the East Tennessee Virginia and Georgia Railroad (later Southern Railway) in Johnson City and both railways shared the same Johnson City depot from 1891 through 1912.

**MOUNTAIN EMPIRE MODULAT RAILROADERS**  
**Minutes**  
**January 15, 2008**

**Call To Order:**

The meeting was called to order at 7:06 PM by F. Alsop, Club President.

**Recognition of Guests and Visitors:**

There were no guests or visitors; 15 members were present.

**Officers' Reports**

**Secretary's Report:** T. Bleck-Doran reported for the secretary who was absent that there were no minutes from the December meeting due to the club Christmas Party and the lack of a business meeting. Minutes from the November meeting were reported in the December 2007 issue of the *Signal Bridge*.

**Newsletter Editor's Report:** T. Bleck-Doran reported that the January 2008 issue of the *Signal Bridge* had been mailed or e-mailed to members in advance of the meeting. IT was noted that the issue was brief due to the lack of club news and business over the holidays. Articles from members were encouraged, especially personal recollections of members earliest encounters with trains and railroading. G. Cameron was approached to submit a monthly column describing items of note in the museum displays. The column will appear later in the year as he has time to prepare copy.

**Treasurer's Report:** D. Swank reported that the club had a balance of \$1,196.21 with an unobligated balance of \$742.38 as of January 15, 2008. He reported that donations received since the opening of the museum and club display have been substantial with \$728 being received across 6 weeks of operation. Dues renewals for 2008 have been coming in with \$408 still outstanding in anticipated dues renewals. There have been two new memberships (J. Miller and C. Klugewicz). Several prospective members have approached the club during Saturday operating sessions and have received membership applications.

**Webmaster's Report:** J. Edwards reported that the club website remains fully operational. J. Edwards and F. Alsop have received training on creating a webpage for the ETSU website linking the club and museum to the University internet. Internet users will be able to access club and museum information while browsing the ETSU website. J. Edwards also announced that email addresses using the club internet connection are still available to members. Instructions on how to establish an email account were published in the December 2007 issue of the *Signal Bridge*.

**Vice-President's Report:** J. Carter reported that he was looking for program ideas for the next three months. The following ideas were shared by the members present:

Training on the new Digitrax system

- Orientation on operating the Bankus N-Gauge layout
- Installing DCC decoders
- Virtual layout tours using the internet
- Websites with modeling and railroad themes
- Local and regional railroad history
- Museum tour
- Modeling Clinics
- Dream Plan Build DVD segments

J. Carter will alert the membership to upcoming programs through the *Signal Bridge*.

**President's Report:** F. Alsop complimented the members for their support in supporting the club and museum operating sessions across the holidays. There has been strong involvement from about a third of the members with 4-5 present on each Saturday session. Other members were encouraged to support the operating sessions. Progress on the modules; N-Gauge and G-Gauge layouts was acknowledged. The Christmas Party was cited for the pleasant social highlight of the season it was. The "Dirty Santa" gift exchange was enjoyed by all.

**Old Business:**

1. **Protection of the N-Gauge and G-Gauge Layouts:** Mrs. Bankus has donated \$600 for the purchase of Lexan to be installed on the N-Gauge layout. Lexan has been purchased and partially installed to date. Cover panels have also been installed to protect operating controls and power supplies. Curtains have been installed across the throat of the layout. Other suggestions for improving layout protection included

- Installation of a panic switch (visitors frequently prevent access to the control panel)
- Surge protection to prevent damage to the power train and gear boxes upon start up after an emergency shutdown.
- Installation of a plug'n'play connector for power supplies and throttles so that controls can be relocated during operating sessions
- Installation of a "hands-on" button similar to the one installed on the layout at the Children's Museum in Johnson City
- Installation of a proximity sensor control system
- Purchase and installation of a RC control system similar to the one on the G-Gauge layout

There is enough Lexan for a partial installation on the G-Gauge layout. A new source for Lexan needs to be identified.

It was noted that the existing security panels on the HO layout are showing some scratched and mars. Discussion about ways to buff and renew the surfaces ensued without action proposed.

2. **Conversion from NEC to Digitrax of HO Layout:** A parts list needs to be developed to itemize components needs to complete installation (e.g., additional panel sockets, handheld controllers, etc.). The club has purchase enough parts to make the change-over operational though it was noted that there were only three controllers (additional will have to be brought in by members to run more than three locos). Installation will start at the January 17<sup>th</sup> work session and continue on Martin Luther King Jr. Day, Monday January 21<sup>st</sup>.

3. **Sound System for G-Gauge Layout:** T. McGee has donated \$150 to purchase a sound system for the G-Gauge layout. Three free-standing modules have been ordered by J. Edwards (Sawmill, Honkey-Tonk/Saloon, Steam Locomotive) with three speakers to be placed around the layout

4. **Engineer Hats for Member and For Sale:** Hats item from November meeting was "recapped." F. Alsop has yet to check with ETSU bookstore operations to see if there were any conflicts with having the club retail items in the museum such as club/museum engineer hats, patches. H. Hyder reported that hats were available for \$5.00 (adjustable band 1-size fits all). Patches would cost and additional \$3.00 hot stitched to the hats. Discussion centered around purchasing

an initial batch of hats for club members. H. Hyder to check cost of direct embroidery instead of heat stitched patches. Motion to purchase hats for club made by H. Hyder/L. Frazer. Motion to table until By-laws acted upon made by T. Bleck-Doran/H. Swank. Passed. Motion to purchase 24 hats for members following by-laws changes made by H. Hyder/J. Carter. Passed. (not really according to Roberts Rules!).

5. Other Old Business: None

#### New Business:

- 1. Volunteer Schedule and Meeting Club Obligations to ETSU:** F. Alsop reminded the membership that we are obligated to cover the museum for Saturday operating sessions. 3-5 members are needed to run the three layouts. Experienced operators are needed for each layout, the G-Gauge being the least complex to operate. Members present signed up for dates through [February 16th](#). See schedule poster on the club website. F. Alsop to contact absent member using phone chain. T. Bleck-Doran to publish a list of member phone numbers and web addresses.
- 2. Accepting Permanent & Temporary Loan items for the club and museum:** F. Alsop noted numerous donations and loan of objects to both the club and museum. He has been in contact with the Carol Reese Museum curator and has sample donation forms. He will edit them for club/museum use and have a supply available at the club. It will be important for those receiving donations to indicate name of donor, item description, whether permanent donation or loan, whether to club or museum.
- 3. Changing Entry Code on Keybox:** Numerical pass code for the key box on the outside door will be changed as of Thursday, [January 17, 2008](#). Full members will be informed of the new code upon renewal. Members were reminded not to give out the pass code. Members can allow others who are not full members to have access to the club and layout when working

outside of work nights and operating sessions, but must assume responsibility for being the last one out and securing the building/room.

- 4. Guest Register Stand:** the need to relocate the guest register to a more visible location was discussed. Several members will look for a donation of a registry stand to locate near the entry doors.
- 5. Greenway Advocacy:** G. Cameron asked the club to provide input to the engineering firm and Johnson City Mayor's office regarding conceptual plan for the proposed greenway trail along the former ET&WNC right-of-way through the south part of the city. Plans may jeopardize structures like the former Clinchfield RR Depot. The club recommended G. Cameron draft a letter for members input and final editing.
- 6. Passenger Wheelsets:** J. Edwards noted that the N&W passenger car wheelsets show unusual wear. He recommended the purchase of 50 36" all metal wheelsets as replacements. Motion approved. President's train does not need replacement at this time.

**Announcements:** None

**Program:** None due to first reading of amended by-laws.

**Reading of Amended By-Laws:** See report elsewhere in February *Signal Bridge*.

**February Meeting:** 7:00 PM, Tuesday, [February 19th](#), Room 312 Brown Hall ETSU. Social time and dinner for those who wish to meet prior to business session: 5:45 PM, El Toritos Mexican restaurant on State of Franklin in the Kroger shopping center complex west of ETSU campus.

**Adjournment:** the meeting adjourned at 9:46 PM

Submitted: Mary Doran-Bleck



**From the Chief Engineer's Side of the Cab:** The president is going to be out of the town, out of the state and out of the country for a while. I have a professional trip to the Lower Rio Grande Valley of Texas (Feb 9-23) to present a paper at an international conference on bird conservation and to teach some bird identification workshops to employees of the National Forest Service. Then from Feb 28 to March 11 Jo Ann and I will be leading a natural history/birding trip to Panama. So, I will be absent from the railroad yard for about a month. John Carter and the other officers will keep us on track and I am asking everyone to help keep us operational while I tend to other duties.

We have welcomed several new members to the club including our first ETSU student, Jessie Kittle, a history major and a railroad buff. He joins at least 7 or 8 new members this year, many with great model railroading skills, and all of them with a strong interest in model railroading who will be terrific assets to the MEMRR and the Carter RR Museum. For those of you who have not yet renewed your membership this may be your last newsletter. We really need you and the club has never been in better circumstances so please renew and continue to enjoy your railroading hobby with us.

On Martin Luther King's birthday holiday the club switched our DCC from Northcoast to Digitrax. We are learning the system and it is proving to be much more user friendly than our old one. If you have a locomotive with any decoder installed it will still run on our new system, so bring it down and let one of the club members check you out and have some fun. Programming locomotives is much easier and some of the computer wizards in the club are programming and operating engines using a computer networked to the DCC system. ETSU has also installed a computer port in the museum so we can surf the www.

Vice President John Carter will preside over the February meeting. Hoby Hyder will present an informative program surfing some favorite web sites linked to our hobby focusing on model layouts. Two business items of importance will be the second reading and discussion of amendments to our club bylaws (we have to do this a total of 3 times before voting on them) and recommendations for purchase of some additional supporting DCC equipment for the club HO layout. Your attendance at this and all club meetings is important.

We are still getting lots of visitors on Saturdays and we have had a good turnout of club members most Saturdays, several in addition to the guys who have volunteered for the day's operational duties. But, we need members every Saturday and we need everyone to volunteer for at least one Saturday a month to make it easy on everyone and still meet our obligation to the university. So please do your part.

Ladies and gentlemen of the MEMRR I shall miss seeing you over the next few weeks and I will be anxious to get back to be with you on Thursday nights and Saturdays. Keep the journal boxes lubed and the switches aligned until I return.

**Fred Alsop, President MEMRR**

**December 2007 Treasurer's Report**

Balance Forwarded	\$ 468.30
Income	\$ 348.00
Expenses	\$ <u>11.08</u>
Ending Balance	\$ 805.22
Obligations	\$ <u>226.31</u>
Balance Available	\$ 578.91

**January 2008 Treasurer's Report**

Balance Forwarded	\$ 805.22
Income	\$ 780.00
Expenses	\$ <u>389.11</u>
Ending Balance	\$1196.21
Obligations	\$ <u>452.82</u>
Balance Available	\$ 743.39

**Mike Buster**

is having surgery Mid-February – Let's wish him the speediest of recoveries! Hey Mike – now there's no excuse for delaying the roundhouse project.

**MEMRR Clinic Schedule****February**

Model Railroad Websites  
H. Hyder

**March**

The Wreck of 611  
D. Swank

**April**

N&W Oddball Diesels  
T. Bleck-Doran



Norfolk & Western Alco T6's 13 and 43

**SIGNAL BRIDGE  
MEMBER OF THE MONTH  
ALLAN MORTON**

**E-Mail** Allan\_Morton@Memrr.Org  
**Occupation** Telecommunications Executive  
**Home Layout** Yes – Early Stages  
**Guests Welcome** Not Yet  
**MEMRR Module** No – Avid N-Gauger

**Favorite railroad**

Pennsylvania Railroad

**Favorite aspect of hobby**

Building kits and developing scenery

**Least favorite aspect of hobby**

Electrical wiring

**How did you get started in the hobby**

Got my first HO train 40 years ago

**How long have you been a member of the MEMRR**

9 Months

**What got you started with MEMRR**

The move to ETSU and meeting new friends

**What dreams do you have for your layout or module**

Just to get started on a museum quality layout

**What other model railroad or railfan activities do you participate in**

Active member of the Pennsylvania Railroad Technical and Historical Society... Collect PRR Railroadiana

**What one thing would improve MEMRR**

Programs to get new members involved and stay involved as a member.



## Locomotive Fact Sheet

### Norfolk & Western Alco T-6 Switchers

Alco's T6 - Original Owners  
55 US, 2 Mexico

Qty.	Road	Numbers	Date	Builder's #s	Notes
2	AH	126,127	12/64	3391 - 01, 02	Altos Hornos de Mexico
2	AC	16,17	6,7/66	3454 - 01, 02	American Cyanamid (Brewster, FL)
2	KS	1022,1023	12/59	83392, 83393	Kaiser Steel (Fontana,CA)
1	MC	400	7/68	6004 - 01	Monongahela Connecting
2	N&SS	1016,1017	1/69	6017 - 01, 02	Newburgh & South Shore; last order built at Schenectady
2	N&W	10,11	1/59	82309, 82310	
10	N&W	12-21	2-3/59	82313 - 82322	
28	N&W	22-49	4-10/59	83364 - 83391	N&W 40,41 to Chesapeake & Western 10,11
6	PRR	8424-8429	3/58	83857 - 83862	to PC 9844-9849
2	PT	46,47	2/68	3489 - 01, 02	Portland Terminal (OR)



The T-6 wasn't one of the bigger prototype sellers for Alco. A total of 59 T-6's were built - N&W had 40 units built on construction number 83380. Kaiser Steel Corporation had 2 units. Steelmaker Altos Hornos de Mexico had 2 units. Newburgh & South Shore had 2 units. The rest were owned by PRR.



The book *Norfolk and Western Second Generation Diesels* has really good coverage of the assignments for these units. The T-6s normally stayed in Norfolk, Va.; Roanoke, VA.; Portsmouth, OH; Ft. Wayne, IN. or Cleveland, OH. They were used on the hump at Portsmouth, as well as at Roanoke. The Roanoke passenger station was switched by them at least until 1960 or so. In later years a GP-9 was assigned to the passenger station in Roanoke. They were delivered with MU capability and were geared for a maximum 60 mph.

The Alco T-6's were seen on a regular basis on the Norfolk, Franklin, & Danville line (formerly the Atlantic & Danville). In Courtland one could see them spliced in with other 4 axle power such as GP-30's, GP-18's, GP-9's, and especially other Alco RS-11's assigned by the N&W to this line and "painted" for the NF&D

back in the late 60's, all through the 70's, up until the abandonment of the lower half of the line from Lawrenceville to Danville in 1982. The T-6 units were also used as a regular switcher for traffic in Franklin and for Suffolk. They used three-unit at Portsmouth, not because two units couldn't shove the trains up the hump, but because if they stopped two units didn't have the braking power to hold a heavy coal train. Other than the ones operated on Chesapeake Western, they were never used on the Shenandoah Division.

The T-6's were used at Lambert's Point and Portlock yards. At Sewells Point, ex-Virginian H-16-44's were the rule. In the early 60's, the T-6's worked the hump shoving loaded hopper up to the Barney Yard for dumping usually in three-unit consists. These were soon replaced with the ex-Virginian engines. The T-6's also work most other jobs at Lambert's Point. The T-6 was a good engine to work with, but not overly powerful as you would expect. Engineers used to say they were some of the roughest riding diesels around. They were the last diesel power in Chesapeake Western colors; one of the two is still so marked at the museum in Roanoke.



ALCO T-6	
Power type	Diesel-electric
Builder	ALCO
Model	T-6
AAR wheel arr.	B-B
Gauge	4 ft 8½ in (1,435 mm)
Power output	1000 hp

**JOIN THE FUN**  
**THURSDAYS**  
 ARE WORK NIGHTS THE CREW GATHERS BEGINNING AT  
 5:30 OR SO...  
 COME WORK ON THE LAYOUTS  
 - OR -  
**SATURDAYS**  
 WE ARE OPEN TO THE PUBLIC  
 GET IN THE ACTION AND RUN SOME TRAINS  
 WE ARE OPEN 10 AM UNTIL 3 PM  
 THERE'S ALWAYS SOMETHING TO  
 LEARN - SEE - OR - DO  
 IN N Gauge - G Gauge - and HO

**A MEMRR Member Benefit**  
**Set up a MEMRR Email Account – Ask John Edwards how to get one!**

~~MOUNTAIN EMPIRE MODULAR MODEL RAILROADERS of Upper East Tennessee and Southwest Virginia~~

~~sponsored by full adult members. Associate members dues will remain at \$12.00.~~

**BYLAWS**

Article I. The name of this organization shall hereafter be known as, ~~Mountain Empire Modular Model Railroaders of Upper East Tennessee and Southwest Virginia (MEMRR)~~, with only the first phrase ~~Mountain Empire Modular Railroaders~~ used in daily reference. ~~The complete full name will be reserved for official use on club stationery, membership cards, business cards and legal documentation only.~~

Article II. The officers of this organization shall be elected by popular vote of the membership at the November business meeting each year and retain that office for one calendar year. The officers shall consist of a President, Vice President, Secretary, ~~and~~ Treasurer, ~~Newsletter Editor, and Webmaster~~. The duties of each officer are enumerated in the Appendix to the Bylaws.

Article III. Committees shall be drawn from the general membership with appointments made by the president based on interest of the individual members and needs of the club.

Article IV. Membership is open to any individual with a sincere interest in ~~HO gauge model railroading and who has reached their 18<sup>th</sup> birthday.~~

A full adult member ~~(\$30.00/yr.)~~ is defined as one who pays "full member" dues as set by the club in Article VIII and is willing to construct or assist with the building ~~and/or operation~~ of one or more modules ~~or layouts for club use~~ which meets the current club specifications. ~~Only paid up full members will have access to the Museum key box.~~

Youth members ~~(\$5.00/yr.)~~ are non-voting members between 14 years of age and 18 years old and will be accepted if sponsored by a full adult member. The adult member will accept full responsibility, financial and otherwise, for their sponsored youth.

A family member ~~(\$5.00/yr.)~~ is a part of a full adult member's family, interested in model railroading and who will support club activities. Family members will have ~~no vote.~~ ~~one vote per adult over 18 yrs. of age.~~

Associate membership ~~(\$12.00/yr.)~~ is one who ~~cannot or does not wish to construct a module but~~ would like to receive the club news letter, ~~and~~ supports the club, and will be non-voting.

**Emeritus membership** is one who has been a long time active member who is voted to this lifetime non-voting status by 2/3's vote of the membership.

**Honorary membership** is one who has been awarded special **non-voting** membership for outstanding contribution by a non-member. To be established by 2/3's vote and renewed by similar vote at each November meeting.

**Dues structure**

~~Dues will be set at \$30 for a full adult member and \$5.00 additional for each family member. There will be no a \$5.00 charge for youth members since as they are~~

Article V. Election of officers and changes to the constitution or bylaws must be announced to the membership no less than one month in advance. Membership will consist of all individuals listed on the official roll kept by the secretary. Changes to the aforementioned documents of the club will require a vote "in the affirmative" of one more than half the voting membership. Passage of regular business items will require a majority vote of the members present at the meeting when the item is on the floor. Members must be sent notice of special called meetings no less than one week in advance of the proposed "called meeting" date.

Article VI. The regularly scheduled business meeting of this organization shall be the third Tuesday evening of each month.

Article VII. These bylaws may be amended by the membership, as deemed necessary, by the process set forth in Article V.

Article VIII. ~~Each member will fund his/her share of the club expenses, to be paid to the Treasurer during the first quarter of the year.~~ **Each member will pay his or her dues to the treasurer no later than January 31<sup>st</sup>.** An extension may be granted upon approval by the President and the Treasurer. ~~The amount required~~ **dues** will be fixed for the next year at the November meeting **and published in the minutes of that meeting.**

Article IX. The President may appoint an Audit Committee once a year to audit the books and physical assets of the Treasurer and to count the "cash on hand" kept by the Treasurer. The audit report will take place after the November business meeting and thereby present the incoming administration an accurate and verified base for the new year.

Article X. All club funds will be kept and maintained by the Treasurer. Expenditures to be submitted to the Treasurer for reimbursement upon receipt of appropriate receipts. All club funds will be maintained by the Treasurer. Upon termination of this club, all funds remaining will be used to pay outstanding debts. Any club-owned property will be sold and the proceeds, along with any remaining cash funds, will be donated to a 501C3 organization.

Article XI. This club has been organized and will operate exclusively for the pleasure, education, and recreation of its members. No part of the club's income and/or contributions will accumulate for the benefit of any member.

~~Article XII. Each full adult member/family group shall donate 4 railroad cars. Cars are to meet the following specifications: mid 40s to 70s era, body mounted kadee couplers, and with metal wheel sets in gauge and free rolling.~~

~~Article XIII.~~ **Article XII.** Unfinished modules shall show substantial improvements in a timely manner. If recommended improvements are not implemented on schedule after advisement from the Executive Committee (officers of the MEMRR), the disposition of the module or modules will be brought to a vote by the membership.

**Article XIII.** Each full member is expected to work **a minimum the equivalent of one full Saturday or two half day Saturdays at the George L. Carter Railroad Museum current club display venue per**



month. Each member is to sign up for scheduled workdays in advance so as adjustments can be made to schedule. Showing up unscheduled with staffing already scheduled is encouraged but will not count towards fulfillment of this commitment.

**Article XIV.** Approved expenditures shall not exceed original estimates by more than 10% unless prior approval by the Treasurer and one other executive officer. (Executive officers are: President and Vice President). No expenditures will be reimbursed without receipt and all receipts must be signed and dated by the purchaser.

**Article XV.** Pro-rated dues for new members who sign up during the year.

Jan. thru Mar.	<del>\$30.00</del>	100%	
Apr. thru June	<del>\$22.50</del>	75%	(for balance of the current year)
July thru Oct.	<del>\$15.00</del>	50%	(for balance of the current year)
Nov. and Dec.	<del>\$30.00</del>	100%	(this will include the following years dues)

#### APPENDIX TO THE MEMRR BYLAWS

##### Duties of the Officers of the Organization

###### President:

1. Prepare meeting agenda and preside over the Monthly Business Meeting.
2. Appoint Committees for various tasks as necessary.
3. Maintain contact with Train Show operators.
4. Prepare and disseminate monthly "Train News Report".
5. Assign individuals to specific tasks, i.e., Program Director, Recording Secretary, Specification Librarian, etc.
6. Provide contact point for local media, civic organizations and political leaders.

###### Vice President:

1. Preside at monthly business meeting in the absence of the President.
2. Is responsible for promotional aspects of the club, i.e., club logo, club brochures, media news releases, etc.
- ~~3. Maintain inventory of club owned property and location of same. (move to Treasurer responsibility)~~
- ~~3. Maintain club archives. (move to Secretary responsibility)~~

###### Secretary:

- ~~1. Publish and mail monthly Newsletter, "Signal Bridge". (move to Newsletter Editor responsibility)~~
- ~~2. Maintain current Active Membership Roll. (move to Treasurer responsibility)~~
- ~~3. Compile and keep a roll of inactive and former members. (move to Treasurer responsibility)~~
1. Take minutes at Monthly Business Meeting (a Recording Secretary may be appointed by the President to perform this function.)

2. Send copies of minutes ~~and to newsletter editor, to the President and the Vice President for the archives.~~
3. Maintain club archives.
4. Originates official club correspondence (i.e.: thank you cards/letters, condolences/etc.)

###### Treasurer:

1. Maintain club funds and account for same in writing.
2. Collect annual club funds due from ~~module owners~~ members and associate members.
3. Prepare monthly financial report (income and expenditures) and submit it to the ~~Secretary~~ Newsletter Editor for publication in the monthly Newsletter.
4. Prepare Annual Financial Report.
5. Maintain inventory of club-owned property and location of same.
6. Maintain current Active Membership Roll.
7. Compile and keep a roll of inactive and former members.

###### Newsletter Editor:

1. Publish and mail monthly newsletter, "Signal Bridge".

###### Webmaster:

1. Secure and maintain a suitable web host for the MEMRR web site. (Insure that yearly host fees are paid)
2. Design and create MEMRR and George L. Carter Railroad Museum web pages.
3. Maintain and update web pages in a timely manner.
4. Maintain an E-mail list of all members with computer access.
5. Notify all members with computer access of important upcoming club events.
6. E-mail Signal Bridge club newsletter to all members who have elected to receive it electronically.
7. Maintain MEMRR E-mail server.

Amended by the general membership 02/20/2001.

Updated 3/21/06 to include approved Amendments of 02/20/2001 and voted changes to bylaws in 2004 by the general membership.

Amended to its present form by the general membership 05/16/2006.

Amended to its present form by the general membership: Changes for 1<sup>st</sup> reading in red. Date read 1/15/08

Changes for 2<sup>nd</sup> reading in green. Date read:

1<sup>st</sup> DRAFT 1/4/08

2<sup>nd</sup> DRAFT 1/16/08

## A MEMRR Member Benefit

Please feel free to sign out one of the Club's DVD's and Videos – but remember to return the DVD or VHS within 1 week. The club is missing 3 DVD's from the collection.