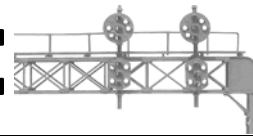


# THE SIGNAL BRIDGE



Volume 14

NEWSLETTER OF THE MOUNTAIN EMPIRE MODULAR RAILROADERS CLUB  
May 2007 ISSUE

Number 6

## CLUB OFFICERS

### President:

Fred Alsop

### Vice-President:

John Carter

### Secretary:

Mary Doran-Bleck

### Treasurer:

Duane Swank

### Newsletter Editor:

Ted Bleck-Doran

### Webmaster:

John Edwards

## LOCATION

ETSU Campus, George L.  
Carter Museum

## HOURS

Business Meetings are held the 3<sup>rd</sup> Tuesday of each month. Meetings start at 7:00 PM at ETSU Campus, Brown Hall Science Bldg, Room 312, Johnson City, TN.

- A social gathering is held prior to the business meeting at **RUBY TUESDAYS** on State of Franklin across from ETSU starting at 5:45 PM. Visitors and those interested in joining MEMRR are invited to attend.

- Work nights are held weekly on Thursday evenings starting at 5:00 PM and lasting until ???

- Open viewing and operating layout is available every Saturday from 10:00 AM until 3:00 PM.



From The Conductor's Desk...

## Our Fading Heritage

Time relentlessly creeps forward with relicts of the past erased from the landscape. For the past two years I have driven past several old houses on Spring Street. They were of dubious distinction but interesting rustic vintage. I would often think that they would make nice additions to the layout. As scratch building projects they would not present very complicated projects. When finished, they would add to the feel that the railroad was actually running through Tennessee countryside. "Ah, they'll still be around," I'd say to myself. "No need to stop and take some photos today." Alas, one day as I was driving past the telltale signs of demolition were evident. I was about to lose a chance to preserve an imaged of history before it passed from the scene.



I could kick myself. Driving further south along Spring Street I noticed another house had been demolished (control burned) while I had been away on vacation. All that remained were two chimneys as mute reminders of the ever changing scene. Even the small barn I had become accustomed to was disappearing board by board.



There's no reason to let a piece of history vanish from the scene without a trace. With today's point-and-shoot digital camera's and the ease of storing images as electronic media, it is easy to preserve of today's scene for the future.

So, today I carry my digital point-and-shoot camera along when I'm out for a ride just in case some building or line-side structure catches my eye. Perhaps even a passing train will fill the view-finder and be preserved for some future day.

What will you preserve today?



## JOIN THE FUN

THURSDAYS ARE WORK NIGHTS

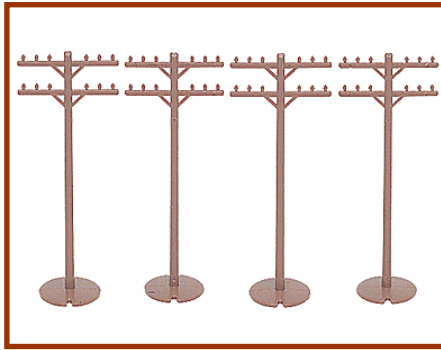
THE CREW GATHERS BEGINNING AT 5:30 OR SO...

THERE'S ALWAYS SOMETHING TO LEARN - SEE - OR - DO

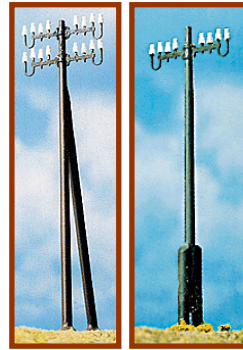
## Commercially Available Telegraph and Power Poles: How They Stack Up



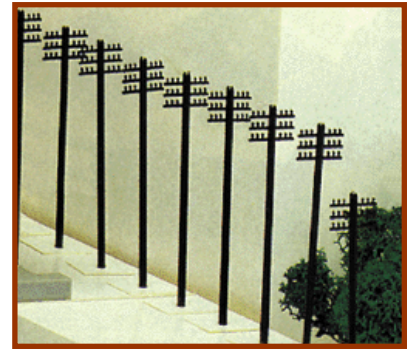
Atlas



Bachmann



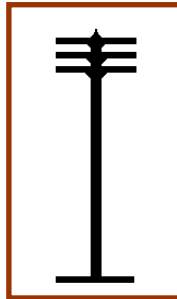
Brawa Modellspeilwaren



Heljan Plastic



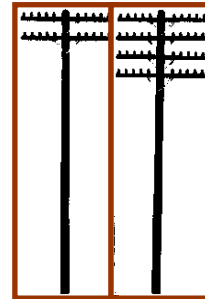
Life-Like



Model Power



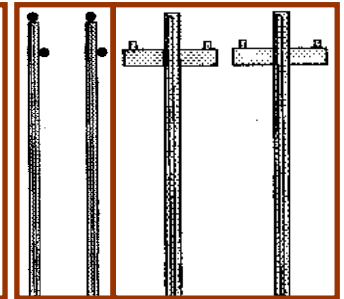
Plastruct



Rix Products



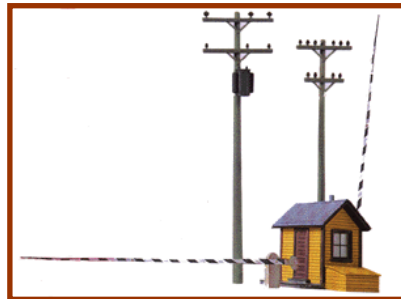
Scale Structures



Stewart Products



Vollmer Gmbh



Walthers Cornerstone



Manufacturer		Meets NMRA RP	Walthers Number
Atlas		Yes w/modification	Walthers Part # 150-775
Bachmann		No- 6 Insulator arm	Walthers Part # 160-42102
Brawa Modellspeilwaren	Telephone Poles w/Supports,	European Modern	Walthers Part # 186-2669
Brawa Modellspeilwaren	Telephone Polesw/Base Supports	European Modern	Walthers Part # 186-2670
Heljan Plastic A/S	Telephone Poles pkg(10)	No- 6 Insulator arm	Walthers Part # 322-512
Life-Like Products	Utility Poles pkg(12)	Yes w/modification	Walthers Part # 433-1621
Model Power	Telephone Poles	No- insulators missing	Walthers Part # 490-1452
Plastruct Inc	Wood Telephone Poles	Yes w/modification	Walthers Part # 570-94852
Rix Products	Railroad Telephone Poles (Brown Plastic)2-Arm pkg(18)	Yes- Telegraph/phone	Walthers Part # 628-32
Rix Products	Railroad Telephone Poles (Brown Plastic)4-Arm pkg(12)	Yes- Telegraph/phone	Walthers Part # 628-34
Scale Structures	Telegraph Poles	Yes- Power Poles	Walthers Part # 650-2540
Stewart Products	Rural Utility Poles 4-1/2"	Yes- Power Poles	Walthers Part # 683-126
Stewart Products	Rural Utility Poles 4-1/2" w/Brackets	Yes- Power Poles	Walthers Part # 683-127
Vollmer Gmbh	Telephone Poles Single	No- 6 Insulator arm	Walthers Part # 770-6010
Walthers Cornerstone	Cornerstone Series(R) Built-ups - Single Building w/Accessories Crossing Shanty w/2 Positionable Gates & 6 Utility Poles (Cream, green trim	Yes - Power Poles No- 4/6 Insulator arm	Walthers Part # 933-2805
Walthers Cornerstone	Cornerstone Series(R) Built-ups - Single Building w/Accessories Crossing Shanty w/2 Positionable Gates & 6 Utility Poles (Two- tone Gray)	No- 4/6 Insulator arm	Walthers Part # 933-2812

**PRODUCT REVIEW**  
**Dream-Plan-Build Video Series, Vol. 7**

Coming fast on the heels of the Real Rail Edition – F Units in Action, Kalmbach Publishing Co.'s has released the 8<sup>th</sup> volume in the Dream-Plan-Build Video Series. This DVD contains the blend of modeling, rail history, layout tours and tourist segments in a format similar to that of the other DVDs in the series. Of interest, the DVD contains segments on:

Model Railroad Techniques

- Building L-Girder Benchwork
- Scratch Building from Model Railroader Plans
- FineTuning Your Rolling Stock
- Tips for Better Sound with DCC
- Creating a Realistic Forest Scene
- Enhancing Wood Structures by Weathering

Model Railroad Layouts

- Lorell Joiner's Intricate Industrial O Gauge Layout
- Adding the Details on NeilThompson'sHO Layout
- Western Realism on Ellito Klein's O Gauge Layout
- Bob Board's American Flyer Layout and Collection

Prototype

- The History of the Bicentennial Train
- Riding the Rails at the Kentucky Railway museum
- Preservation of Steam on the Heber Valley Railroad

This volume contains much of what we've come to expect in the series. Borrow the club's copy, sit back, and enjoy an hour or so of interesting ideas.

Cost: \$24.90 (S&H Included)

**TREASURER'S REPORT**

As reported at November's meeting:

04/01/07	Balance on Hand	\$ 1,230.52
	Income	\$ 65.54
	Expenses	<u>\$ 50.58</u>
04/30/07	Ending Balance	\$ 1,245.48
	March Obligations	<u>\$ 264.55</u>
	Balance Available	\$ 980.93

**PRODUCT REVIEW**  
**Dream-Plan-Build Video Series,**  
**Real Rails Edition**  
**F Units in Action**

The Dream-Plan Build Video Series from Kalmbach Publishing Co.'s has developed into several distinct lines with the new release of a second Real Rails Edition on "F Units in Action."

The video provides a history and overview from the development of the EMD F-Unit to it's demise as a mainline road engine. And on into the era as a tourist line prime mover. Chapters present the story of how the FT changed how railroading moved cars on steel rails. The story starts with the development of the FT and its successors (F2, F3, F7 and F9); details on how the FT compared with steam (comments on cost savings the Union Pacific experienced by eliminating 1/10<sup>th</sup> of his trains in the desert southwest by not having to run water trains to towers along it's right-of-way was an eye-opener); the explanation of why the F unit fell to the GP series is also interesting.

The video is not for everyone, but there are some interesting lessons for the modeler. Early diesel paint schemes for some regional roads are evident throughout the video. Several scenes of L&N F's are striking.

This volume contains much of what we've come to expect in the series. Borrow the club's copy, sit back, and enjoy an hour or so of interesting ideas.

Cost: \$24.90 (including S&H)

**Next Meeting: MAY 15<sup>th</sup>, 2007**  
**Location: ETSU, Brown Hall Science Building, room 312**  
**Time: 7:00 PM**  
**Dinner: 5:45 PM Ruby Tuesdays**  
**Across from ETSU on State of Franklin**  
**Program: TBA**

