

# Joys of Railroad Photography

Presented at  
Twentieth Century Railroad Club

April 10, 2013



George W. Hamlin  
Hamlin Transportation Consulting  
Fairfax, Virginia  
[george@georgehamlin.com](mailto:george@georgehamlin.com)

# George Hamlin--Background

- Day Job: Transportation consulting
- Prior Career: Two airlines, two aerospace companies
- Began railroad photography in 1956, with a Kodak Brownie
- Switched to 35mm in 1964
- Primarily slides as of 1970
- Digital as of 2008



# Model Railroader Magazine Slogans

- “Model Railroading is Fun”
- “Enjoyment with Everlasting Challenge”

# Model Railroader Magazine Slogans

- “Model Railroading is Fun”
  - “Enjoyment with Everlasting Challenge”
- 
- 

Which of these applies to railroad photos?

# Model Railroader Magazine Slogans

- “Model Railroading is Fun”
- “Enjoyment with Everlasting Challenge”

---

---

Both!

# Program

- Photos Near Home
- Take a Ride Across Quebec
- Chicago in the Early 1970s

# **Westchester County, New York**

1964-1978





NEW YORK CENTRAL

477









































NEW YORK  
CENTRAL  
SYSTEM

TRACK  
4

KING OF THE  
TOWN  
RESERVATION  
FOR PASSENGERS































































































PENN  
CENTRAL

4733

4733

4733









































**M. REMIZ**  
**PURINA CHOWS**  
**POULTRY SUPPLIES**











MORE BANK FOR YOUR MONEY  
...go SETCO!  
SUMMIT and BUCKEYE































214

ASM-15

DANGER  
NO OIL





















C.N.J.

1178



367





831

READING COMPANY

9110









































2501 2501



2501

ERIE LACKAWANNA

2501

ERIE LACKAWANNA  
STATION  
570 POINT

















MOTEL ON THE MOUNTAIN

1515

1511









PENN CENTRAL

3826

2219

PENN









4872

PENN CENTRAL

4872













4604



PENN CENTRAL

4604

4601





9473

PENN CENTRAL

9473

PENN CENTRAL

9473

69





























3249

3249

PENN CENTRAL

3249

230

PENN CENTRAL

PENN CENTRAL

3211









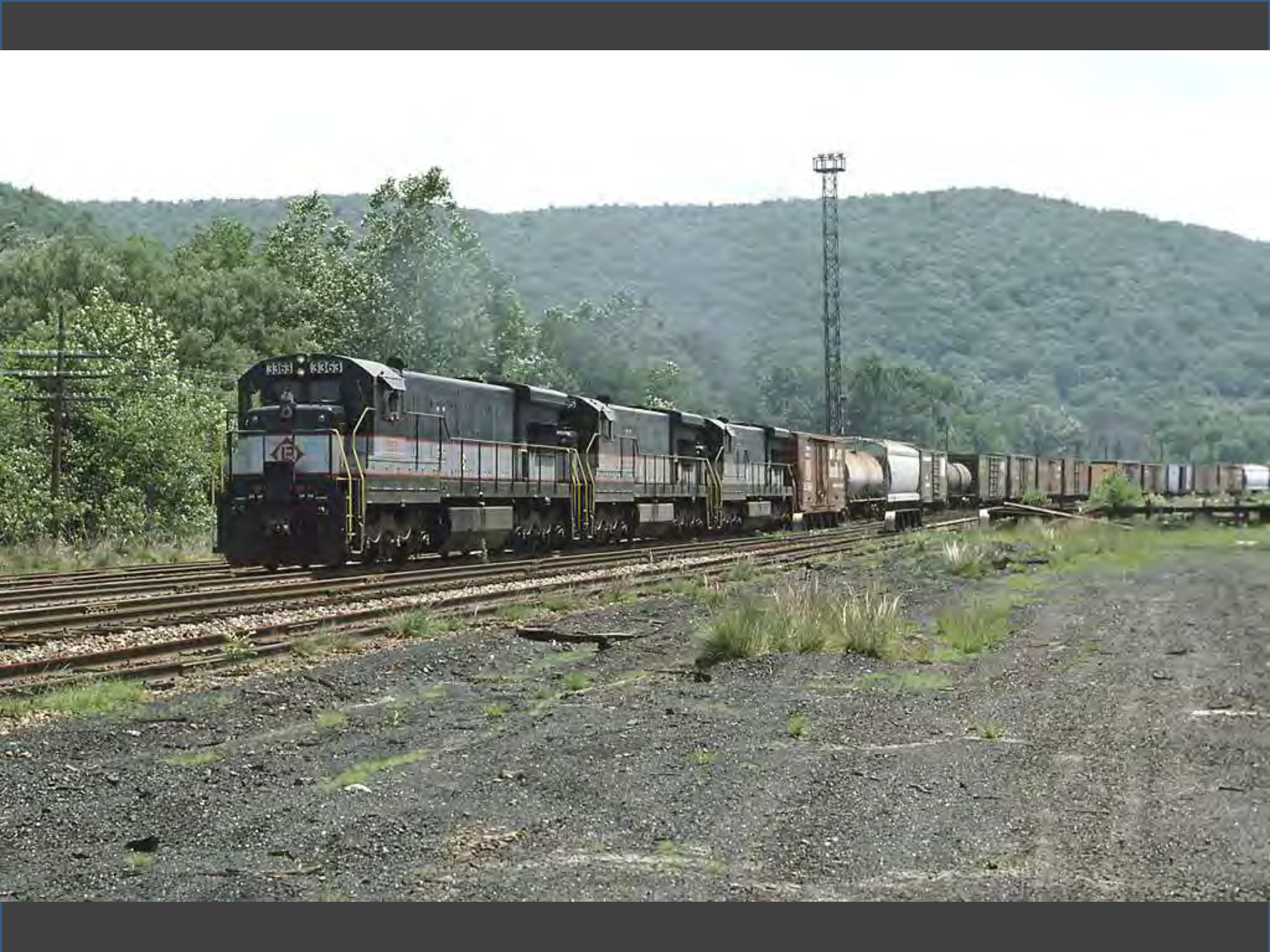




























3165

3165

CONRAIL

6094

3062

IR

IR

6094

CFR

61







# **Houston, Texas**

1978-1981









































4448

4448

Rock Island

4461

263

34

34





































3157

3157

3138







2122

315

313

SP 599220

CAPY 195 JO FMS  
LD LMT 195800





















4327

MINNESOTA

2536





3137 3137

CONROE

CONROE









3177 3177

PULLING OUT OF  
CITY IS NOT A GOOD IDEA  
IF YOU SEE THIS

































3113

SP

313

SOUTHERN  
PACIFIC

SOUTHERN PACIFIC

















8668

SOUTHERN  
PACIFIC

9257

9257

1370









7832

7832

SP

7832

SOUTHERN PACIFIC

SOUTHERN PACIFIC





























4342

4342

2510



























# **Atlanta, Georgia**

1981-1989



RAIL  
CROSSING  
ROAD

GEORGIA LAW  
STOP  
UNSAFE PASSING







6147

6147

6







325

325

SEABOARD COAST LINE

325

972

SEABOARD COAST LINE

987

SEABOARD COAST LINE

987

987

COTTON

RY





















SCL

5131

5131

FAMILY LINES SYSTEM

SCL/EN  
GEORGIAN LINCHELD  
BEST PINT ROUTE

















SOUTHERN

X333

SOUTHERN

1488

CP-CR

84-CE

EEG

1488

CP-CR

84-CE

EEG

1488

CP-CR

84-CE

EEG

1488

CP-CR

84-CE

EEG

1488

CP-CR

84-CE

EEG

1488

CP-CR

84-CE

EEG

1488

CP-CR

84-CE

EEG

1488

CP-CR

84-CE

EEG

1488

CP-CR

84-CE

EEG

1488

CP-CR

84-CE

EEG

1488

CP-CR

84-CE

EEG

1488

CP-CR

84-CE

EEG

1488

CP-CR

84-CE

EEG

1488

CP-CR

84-CE

EEG

1488

CP-CR

84-CE

EEG

1488

CP-CR

84-CE

EEG

1488

CP-CR

84-CE

EEG













SOUTHERN

4601

3192 3192

3323

























CARTERSVILLE

CARTERSVILLE

4067

4067

37

L&N









































NORFOLK AND WESTERN  
1407

NORFOLK AND WESTERN

NORFOLK AND WESTERN

















6900  
NEW  
GEORGIA









873-1719

**Budweiser**  
Atlanta  
THIS BUD'S FOR YOU.  
KING OF BEERS

NORFOLK AND WESTERN

1210













OFFICIAL NEW GEORGIA RAILROAD SOUVENIRS

3498

F

















RAILROAD  
CROSSING

2  
TRACKS

SOUTHERN

BAR

























6344

6344

CSX TRANSPORTATION

6344

CSX





















5501 5501

SEABOARD SYSTEM

5501

FMC Chemicals

551X

















4229

Chessie System

4229  
C40  
CSX

CSX

6366

CSX

CSX

759

6368

CSX





























UNION  
PACIFIC

automated  
rail way



CUSHIONED LOAD



















# **Northern Virginia/Washington, DC**

1989-2013













4904 PENNSY



509

ATLANTIC COAST LINE

NTI

























73  
MARC

83  
MAR

22

70  
MARC

Passenger train





























































922

30

Amtrak

A SAFE TEAM ON TIME

Amtrak

A SAFE TEAM ON TIME









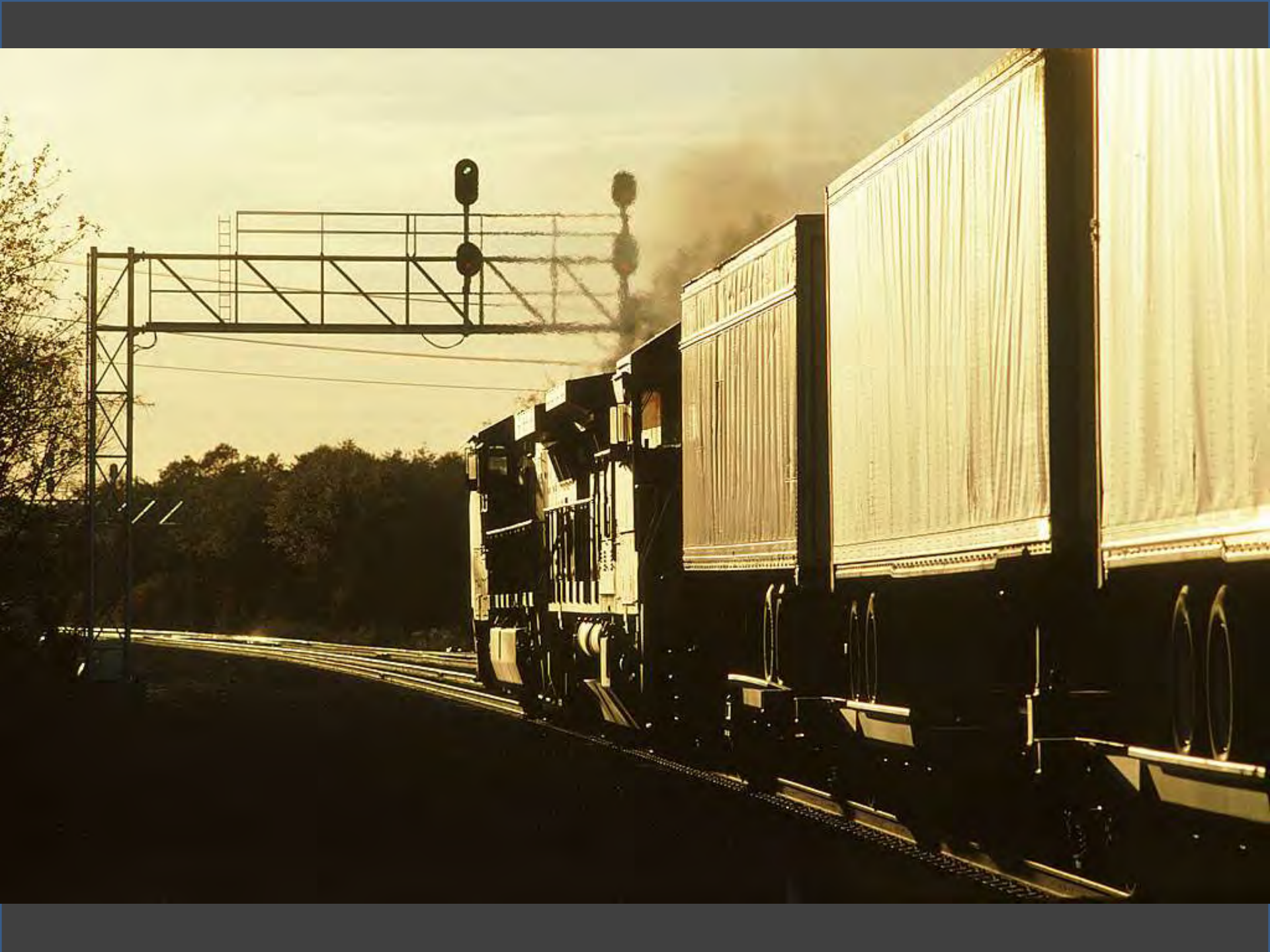
















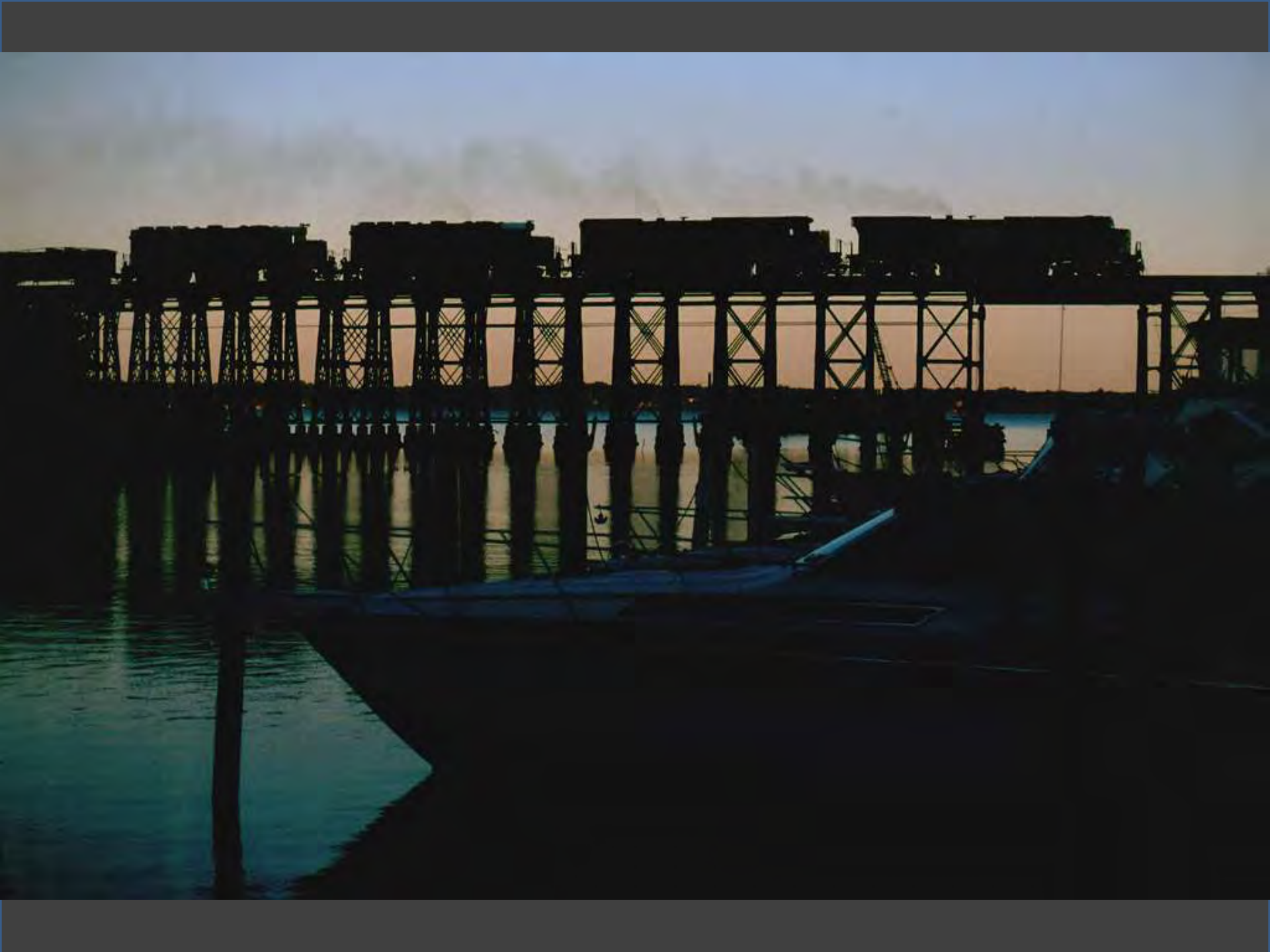





























RAILROAD CROSSING  
CROSSROAD

BLAZER  
4X4  
CHEVROLET

PORTBEC





 New Carrollton

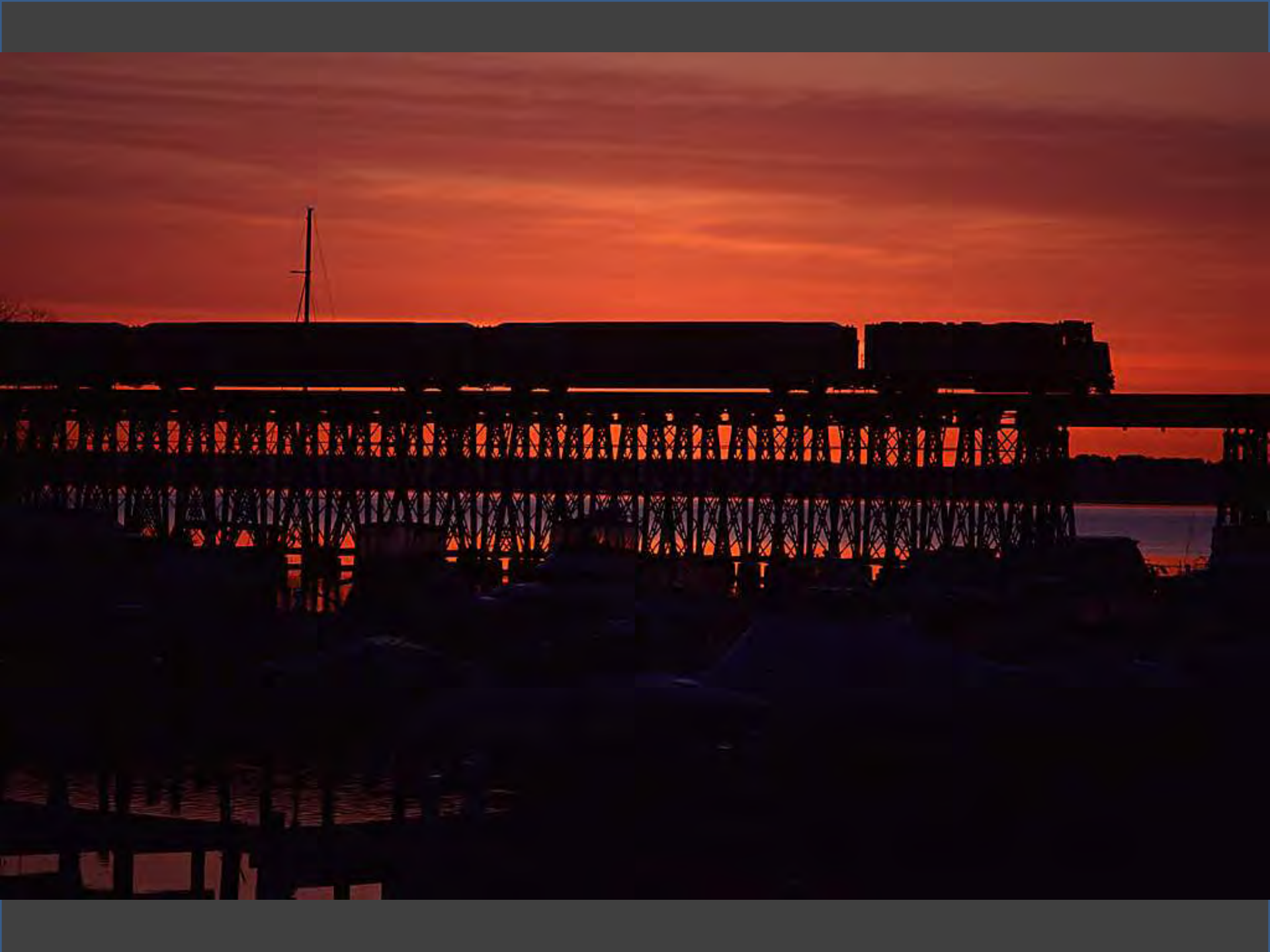
New Carrollton

New Carrollton

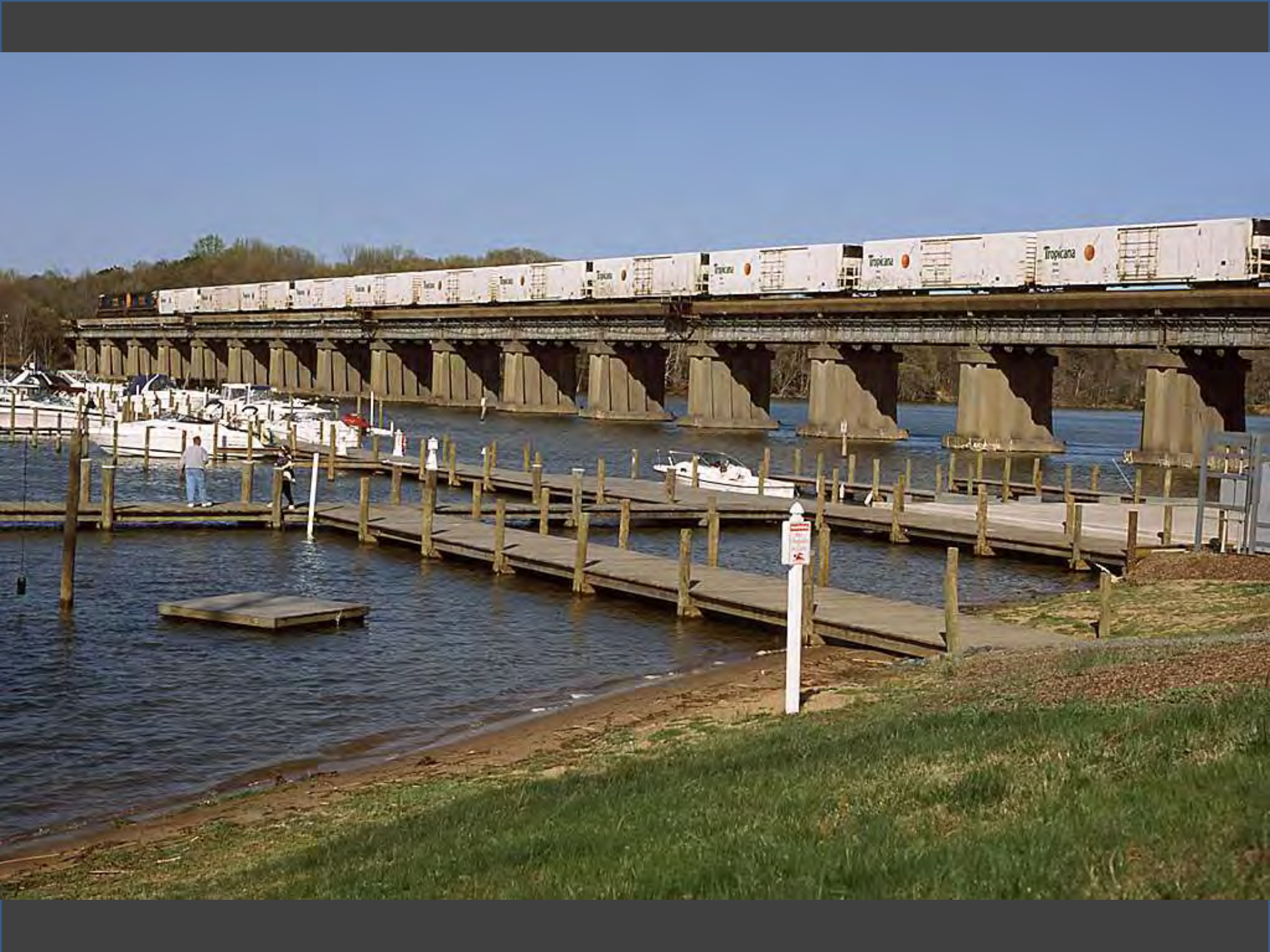








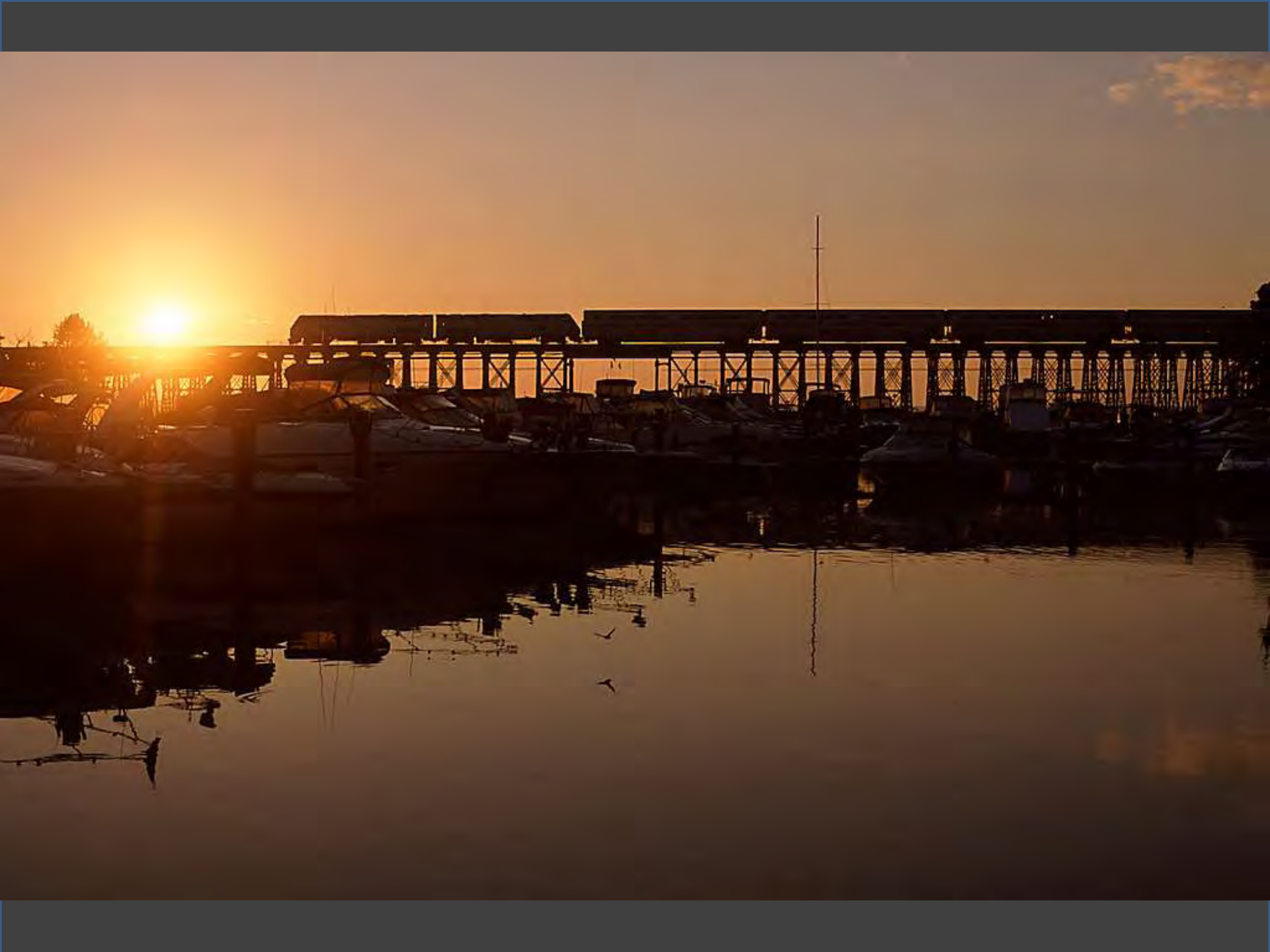
















V40

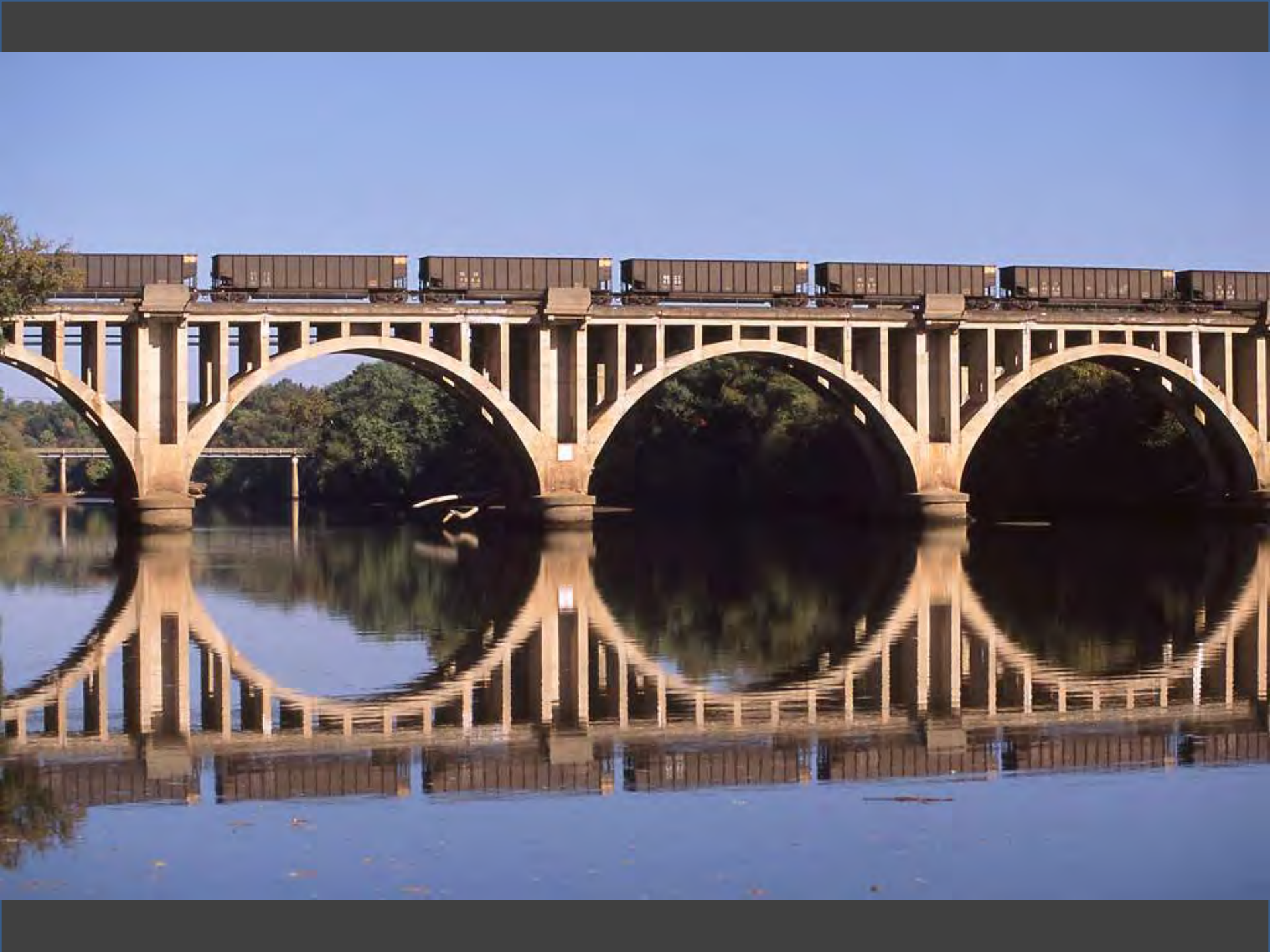
V40











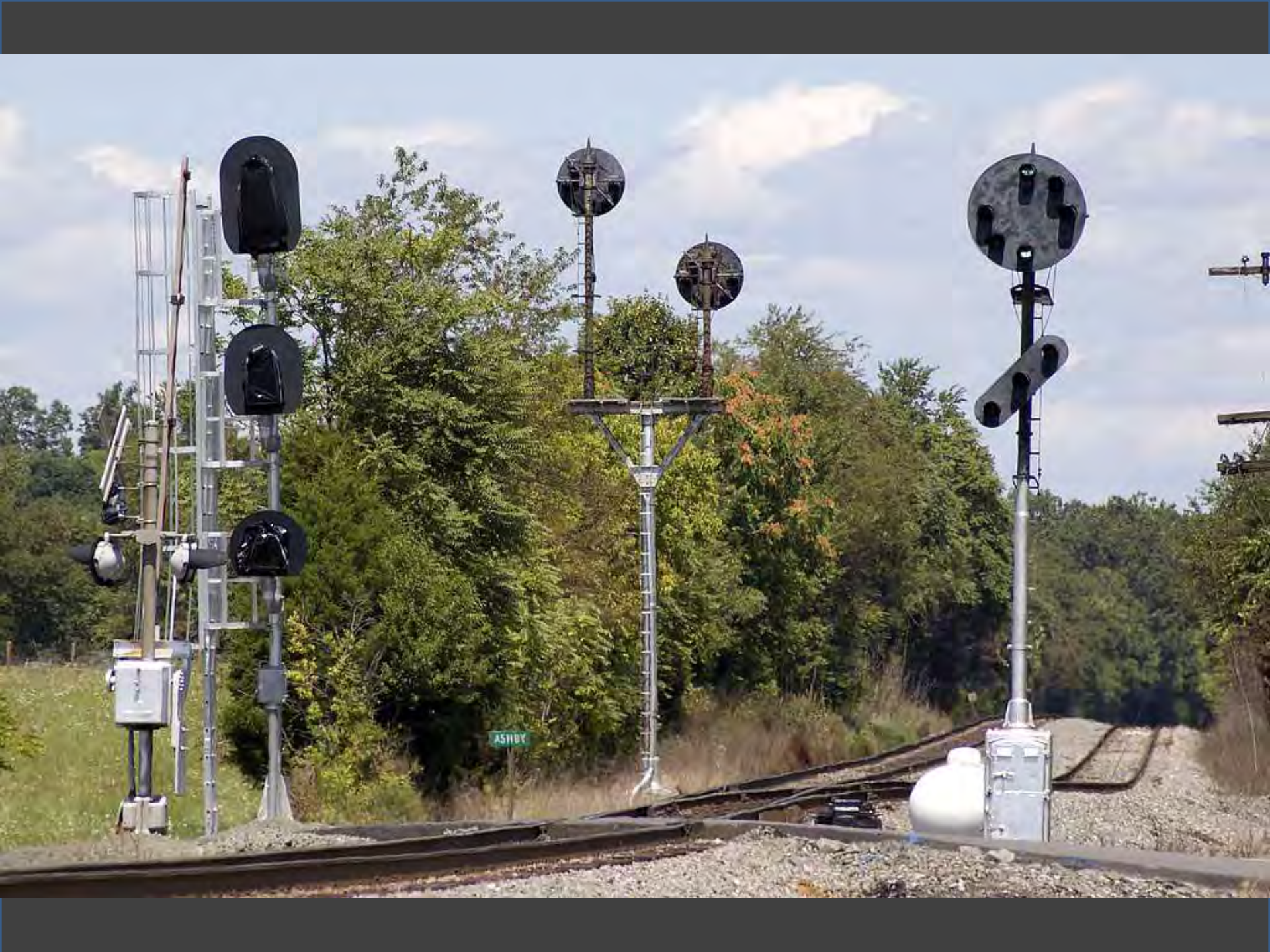












ASHBY









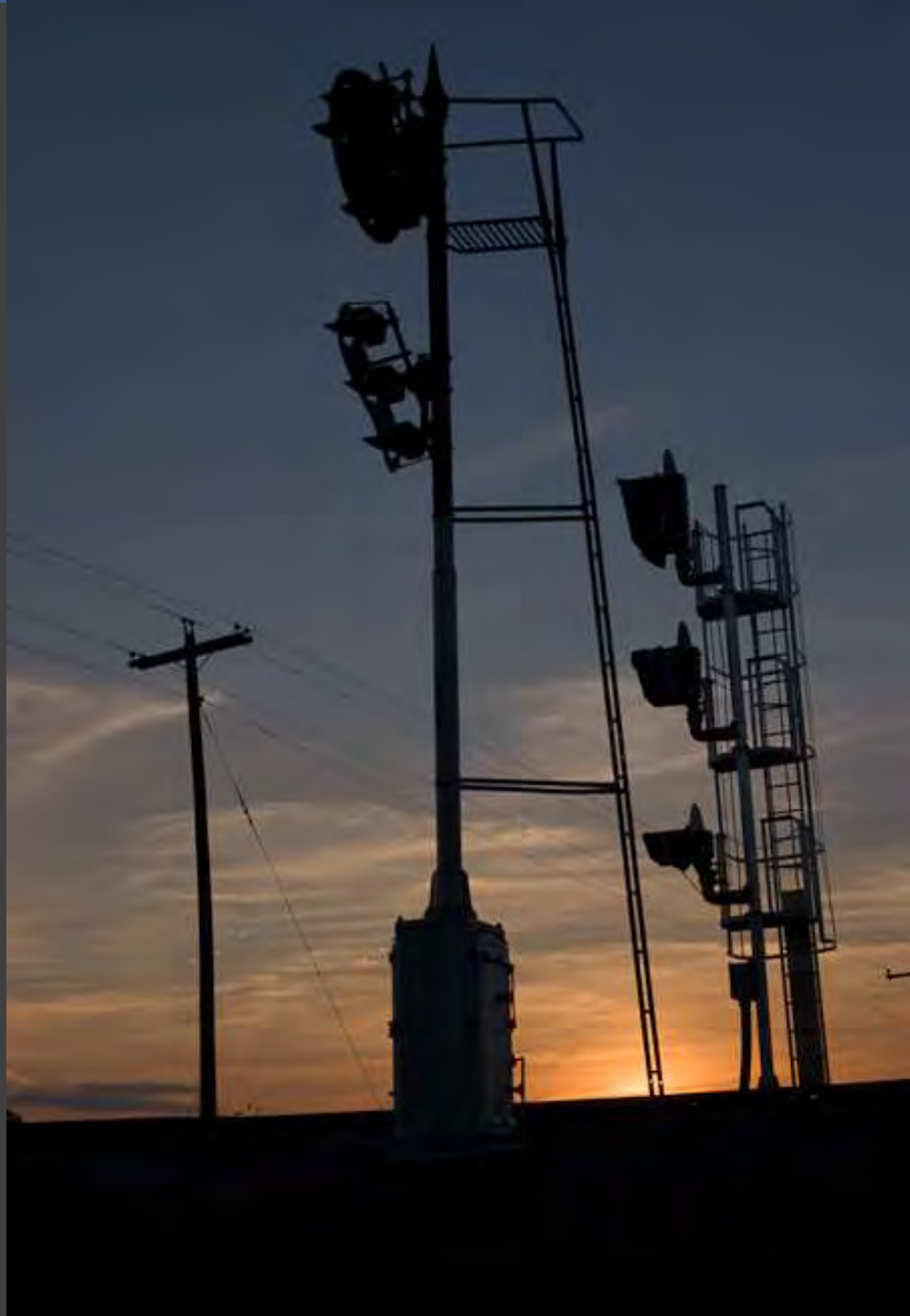
























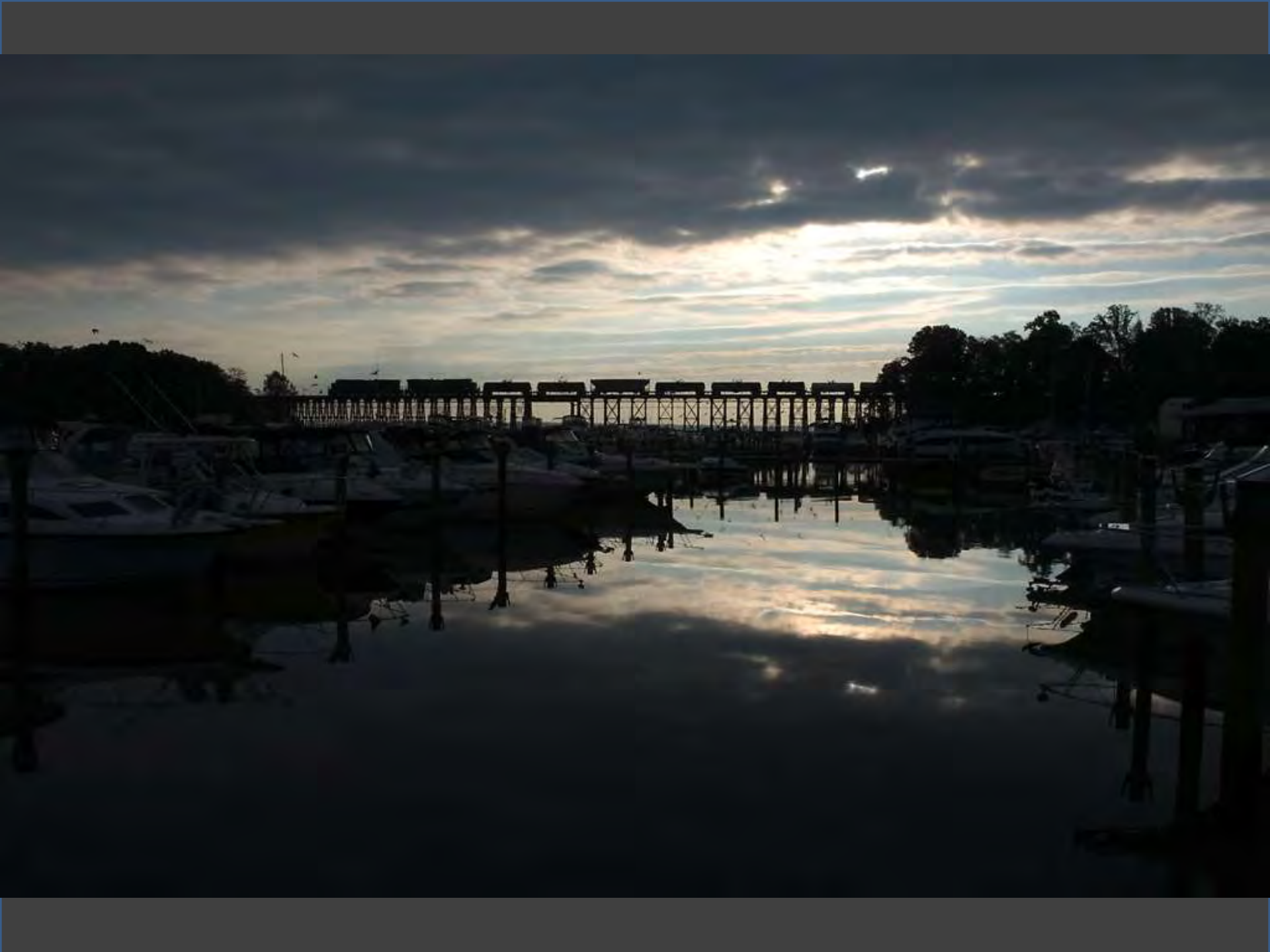
Virginia

Welcomes You





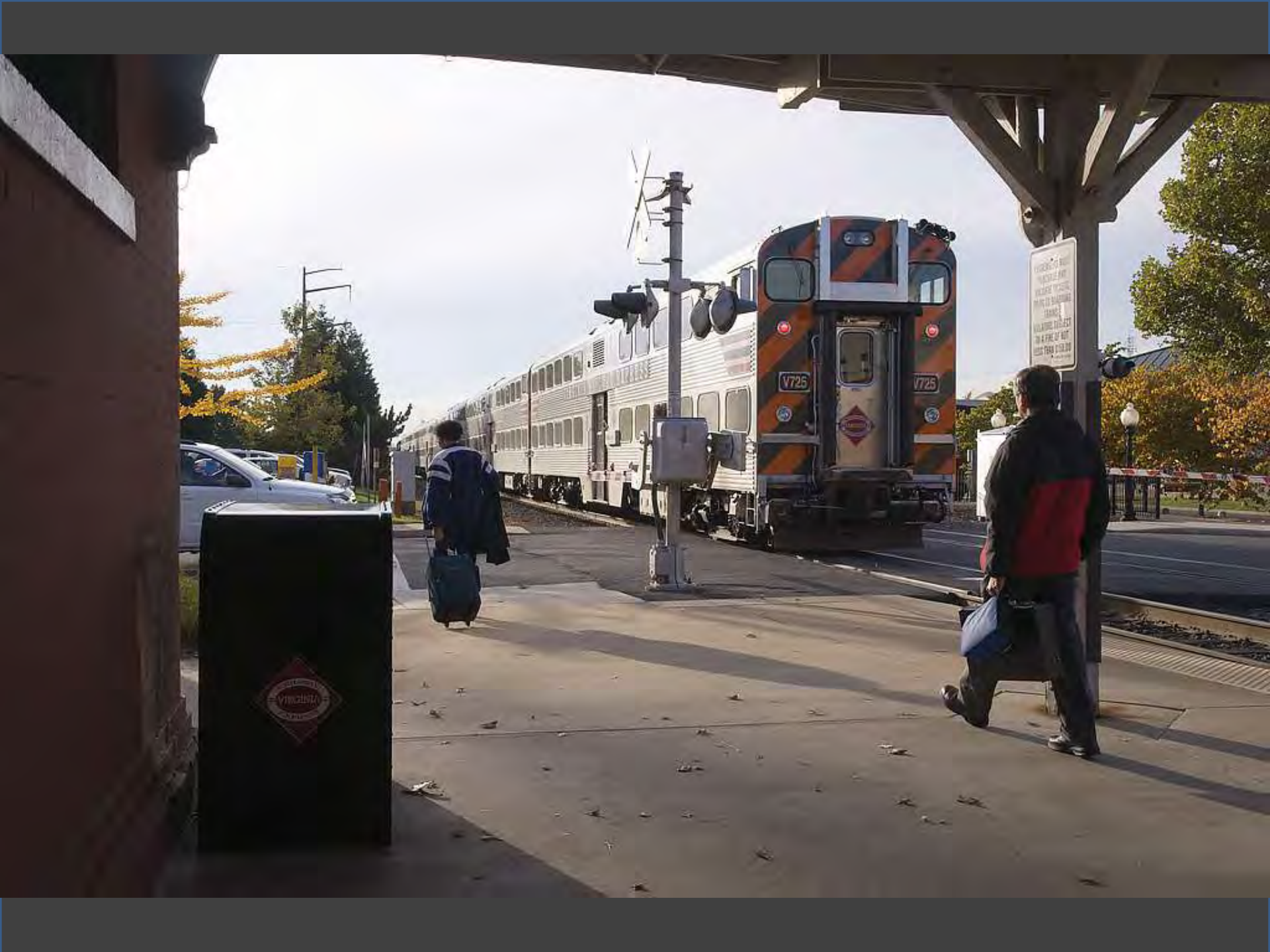






















































































VIRGINIA RAILWAY EXPRESS



















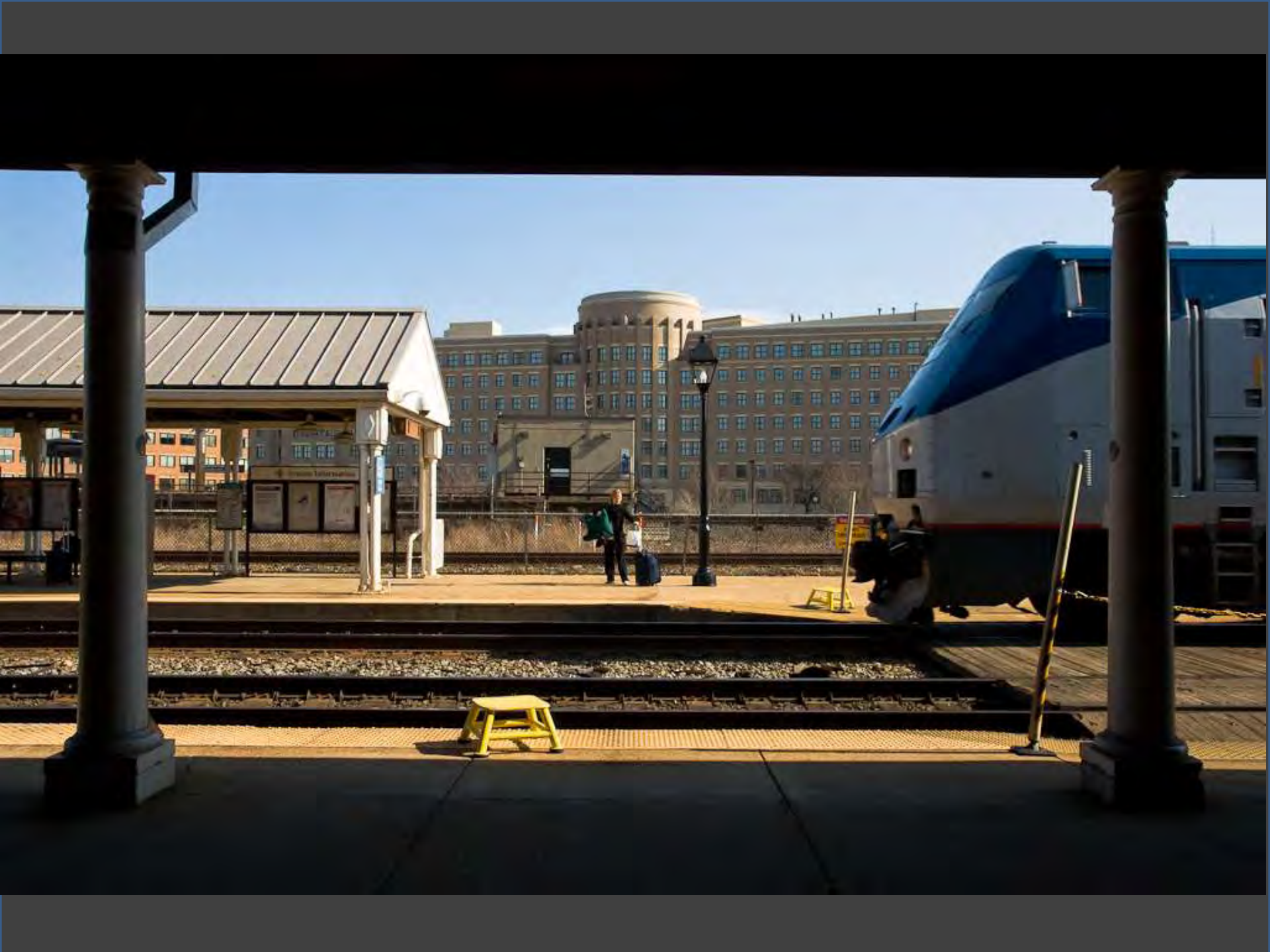




















BEING HAPPY COMES  
FROM FINDING JOY  
IN THE LITTLE  
THINGS IN LIFE



# Program

- Photos Near Home
- Take a Ride Across Quebec
- Chicago in the Early 1970s



# THE CHALEUR

A CHARMING SCENIC JOURNEY WITH  
A UNIQUE GASPÉ FLAVOUR





## OVERNIGHT COMFORT BETWEEN MONTRÉAL AND THE GASPÉ PENINSULA

### THE GASPÉ PENINSULA, UP CLOSE AND PERSONABLE!

The *Chaleur*<sup>™</sup>, so named to celebrate the scenery along the Baie des Chaleurs, will become a cozy home-away-from-home whether you travel economy class or sleeping class. With three departures per week all year round, and a convenient stop in Charny for travellers to the Québec City area, this overnight journey between Montréal and Gaspé is a travel adventure with all the charm and flavour of Québec's Lower St. Lawrence/Gaspé region, featuring quiet sunny beaches, an unspoiled coastline, picturesque Percé Rock. Boat tours to the renowned wilderness park area of Bonaventure Island are very popular as well.



SKYLINE CAFÉ

By day, experience relaxed comfort and warm hospitality with a picture window view of the Gaspé Peninsula as the train rolls along the magnificent Baie des Chaleurs, and passes by quaint towns and villages. Friendly conversation awaits in the Skyline Car with its 360° scenic dome and café. Food and beverages are also available. By night, lower the lights, raise your footrest and recline in your spacious chair, comfortably tucked in with your VIA blanket and pillow.

The *Chaleur* sleeping class offers upper or lower berths and single or double bedroom accommodation. A shower room, with free individual shower kit, is conveniently located in each sleeping car. For complete information on sleeping quarters, refer to the "Accommodations" information sheet.



THE BUS-AND-CAP NEAR GASPÉ

THE CHALEUR <sup>™</sup>				
WESTBOUND		CITY & OS CODE		EASTBOUND
Mo Th Sa 15:05	Dp.	<b>GASPÉ</b> (XDO)	Ar.	12:11 Th Sa We
16:24		<b>PERCÉ</b> (XFG)		10:45
Mo Th Sa 20:21	Dp.	<b>CARLETON</b> (XCN)	Dp.	06:38 Th Sa We
Mo Th Sa 21:45	Ar.	<b>MATAPEDIA</b> (XMP)	Dp.	05:28
	Dp.		Ar.	04:51 Th Sa We
Tu Fr Sa 00:18	Dp.	<b>MONT-JOLI</b> (YYY)	Dp.	02:45 Th Sa We
00:43	Dp.	<b>RIMOUSKI</b> (YRK)	Dp.	02:20
02:24	Dp.	<b>RIVIÈRE-DU-LOUP</b> (YRL)	Dp.	00:33
05:07 Tu Fr Sa	Dp.	<b>CHARNY</b> (XEZ)	Dp.	22:05 We Fr Sa
08:06		<b>SAINT-LAMBERT</b> (XLM)		19:05
Tu Fr Sa 08:25	Ar.	<b>MONTRÉAL</b> (YMY)	Dp.	18:45 We Fr Sa

Schedules are subject to change without notice. Not all stops included on every schedule.

Weekend connections are available between Montréal and New York.

LIKE TO KNOW MORE? ASK A TRAVEL AGENT OR VIA RAIL<sup>™</sup>  
FOR TRAVEL AGENCY USE:

VIA RAIL CODE                    3R  
GASPE-APQDC                    17840-VRR  
3-8388                                0WTE-VIA 813  
WORLDSPAN                        www.via-rail.ca  
INTERNET



**VIA**  
VIA Rail Canada



park area of Bonaventure Island are very popular as well.



THE BON-AMI CAP NEAR GASPÉ

THE CHALEUR™				
WESTBOUND	CITY & CRS CODES		EASTBOUND	
Mo.Th.Sa. 15:05	Dp.	<b>GASPÉ (XDD)</b>	Ar.	12:11
16:24				Th.Sa.Mo.
Mo.Th.Sa. 20:31	Dp.	<b>CARLETON (XON)</b>	Dp.	06:38
21:45				Th.Sa.Mo.
22:15	Ar.	<b>MATAPÉDIA (XLP)</b>	Ar.	05:26
00:18				Th.Sa.Mo.
Tu.Fr.Su. 00:18	Dp.	<b>MONT-JOLI (YYY)</b>	Dp.	02:45
00:43				Th.Sa.Mo.
02:24	Dp.	<b>RIMOUSKI (YXK)</b>	Dp.	02:20
05:07				00:33
Tu.Fr.Su. 08:06	Dp.	<b>RIVIÈRE-DU-LOUP (YRI)</b>	Dp.	22:05
08:25				We.Fr.Su.
08:06	Dp.	<b>CHARNY (XFZ)</b>	Dp.	19:05
Tu.Fr.Su. 08:25				We.Fr.Su.
08:06	Dp.	<b>SAINT-LAMBERT (XLM)</b>	Dp.	18:45
Tu.Fr.Su. 08:25				We.Fr.Su.
08:06	Ar.	<b>MONTREAL (YMY)</b>	Dp.	18:45
Tu.Fr.Su. 08:25				We.Fr.Su.

Schedules are subject to change without notice. Not all stops included on maps and schedules.

Amtrak connections are available between Montréal and New York.

LIKE TO KNOW MORE? ASK A TRAVEL AGENT OR VIA RAIL™  
FOR TRAVEL AGENCY USE.

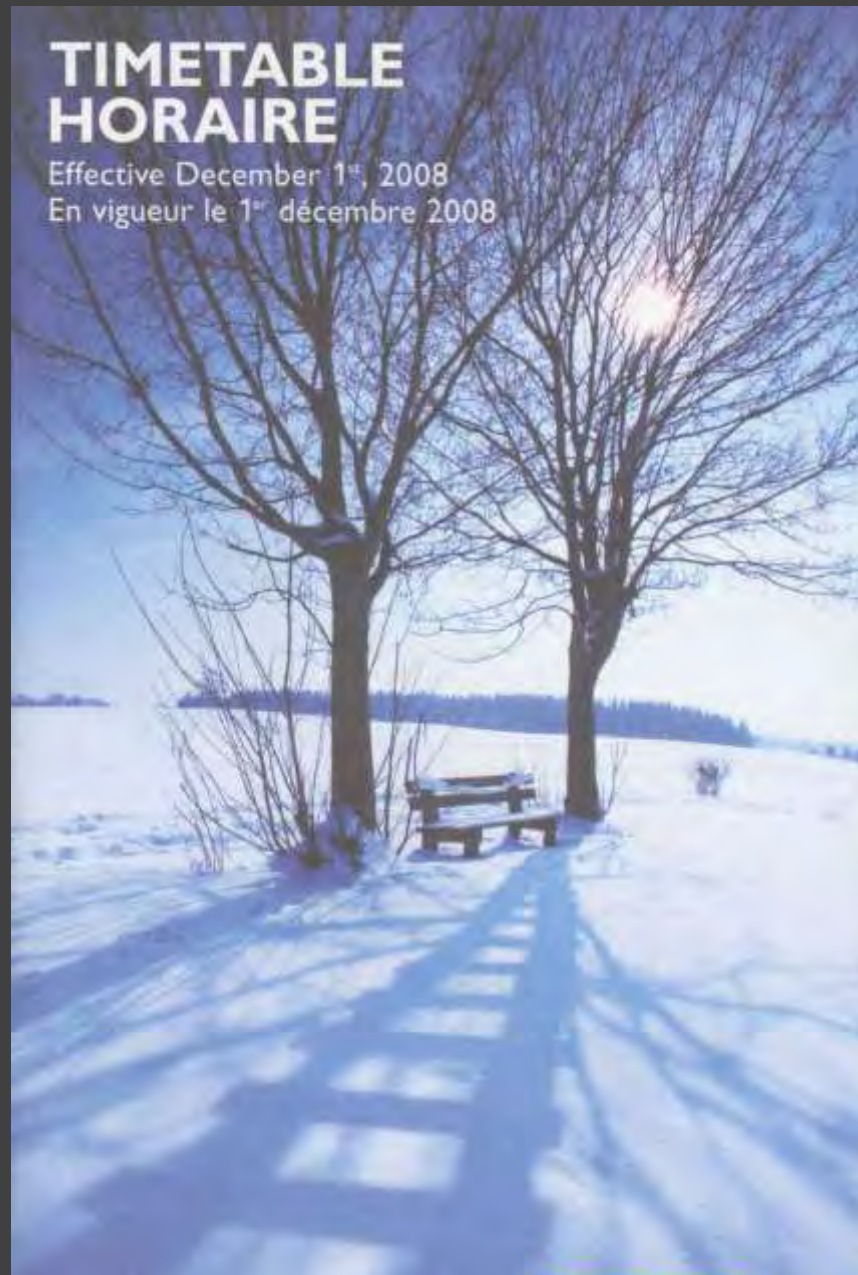
VIA RAIL CODE	2R
GALILEO-APOLLO	S*VIA/
SABRE	Y/RAL/VRR
WORLDSPAN	GWTS VIA RAIL
INTERNET	www.viarail.ca





# TIMETABLE HORAIRE

Effective December 1<sup>st</sup>, 2008  
En vigueur le 1<sup>er</sup> décembre 2008



A  
GREEN  
CHOICE



UN  
CHOIX  
VERT

**VIA**   
VIA Rail Canada



**GASPÉ → MONTRÉAL**

TRAIN	KM	17	617
NAME / NOM		Chaleur	Chaleur
OPERATES / EN SERVICE		A	20 Dec 08 3 Jan 09
DAYS / JOURS		1,4,6	1,4,6
<b>Gaspé, QC</b> ET / HE	0	DP	1425 1505
Barachois	40		1513 1554
Percé	83		1543 1626
Grande-Rivière	80		1605 1649
Chandler	97		1630 1716
Port-Daniel	130		1724 1811
New Carlisle	167		1813 1900
Bonaventure	182		1827 1915
Caplan	200		1843 1932
New Richmond	214		1907 1958
Carleton	254		1952 2044
Nouvelle *	289		2009 2104
Matapédia	328		2140 2215
Causapscal *	382		2228 2302
Amqui	404		2250 2324
Sayabec *	428		2311 2344
Mont-Joli	478		2359 0032
Rimouski	504		0031 0104
Trois-Pistoles	585		0141 0221
Rivière-du-Loup	608		0232 0301
La Pocatière	678		0315 0344
Montmagny *	736		0348 0417
<b>Charny</b>	800	AR	0440 0508
		DP	0455 0523
Drummondville	947		0640 0704
Saint-Hyacinthe	993		0714 0748
Saint-Lambert	1040		0752 0823
<b>Montréal, QC</b> ET / HE (Central Station / Gare Centrale)	1047	AR	0830 0835

**MONTRÉAL → GASPÉ**

TRAIN	KM	16	616
NAME / NOM		Chaleur	Chaleur
OPERATES / EN SERVICE		B	19 Dec 08 2 Jan 09
DAYS / JOURS		3,5,7	2,5,7
<b>Montréal, QC</b> ET / HE (Central Station / Gare Centrale)	0	DP	1815 1825
Saint-Lambert	7		1854 1843
Saint-Hyacinthe	54		1928 1915
Drummondville	100		2011 1952
<b>Charny</b>	247	AR	2152 2127
		DP	2207 2142
Montmagny *	311		2303 2237
La Pocatière	371		2337 2311
Rivière-du-Loup	439		0023 2355
Trois-Pistoles *	482		0052 0033
Rimouski	543		0211 0201
Mont-Joli	578		0248 0231
Sayabec *	619		0333 0323
Amqui	643		0355 0345
Causapscal *	686		0415 0405
Matapédia	722		0535 0500
Nouvelle *	770		0632 0602
Carleton	793		0652 0627
New Richmond	833		0739 0717
Caplan	847		0756 0735
Bonaventure	886		0812 0755
New Carlisle	880		0836 0819
Port-Daniel	917		0902 0901
Chandler	980		1002 1003
Grande-Rivière	987		1026 1027
Percé	984		1048 1053
Barachois	1007		1120 1128
<b>Gaspé, QC</b> ET / HE	1047	AR	1216 1214

Gaspé  
Montréal

A Operates until Dec. 18, 2008 and from Jan. 5, 2009 / En service jusqu'au 18 déc. 2008 et à compter du 5 janv. 2009  
 B Operates until Dec. 17, 2008 and from Jan. 4, 2009 / En service jusqu'au 17 déc. 2008 et à compter du 4 janv. 2009

\* Stops on request. / Arrête sur demande.

Shuttle operates between Charny and Québec City (Gare du Palais) in both directions. Reservations are required. / Une navette circule entre Charny et Québec (Gare du Palais) dans les deux directions. Les réservations sont requises.

No local service between Saint-Lambert and Montréal. / Pas de service local entre Saint-Lambert et Montréal.





**TICKET | BILLET**

Required on board 2  
Requis à bord

HAMLIN/GEORGE <ADT>	Train	Car   Voiture	Seat   Place
	VIA 017	1731	A
From/De GASPE	QC	14Mar	1425
To/A MONTREAL	QC	15Mar	0830
Triple Bedroom / Chambre triple			<RS>

\$ 25.00 Service Charge / Frais de service  
 Refundable | Exchangeable  
 Remboursable | Echangeable



File | Dossier  
**MRC617**

FTR | ETF  
13032009 23847

1



**TICKET | BILLET**

Required on board 1  
Requis à bord

HAMLIN/GEORGE <ADT>	Train	Car   Voiture	Seat   Place
	VIA 016	1631	B
From/De MONTREAL	QC	13Mar	1815
To/A GASPE	QC	14Mar	1216
Double Bedroom / Chambre double			<PS>

\$ 25.00 Service Charge / Frais de service  
 Refundable | Exchangeable  
 Remboursable | Echangeable



File | Dossier  
**MRC617**

FTR | ETF  
13032009 23847

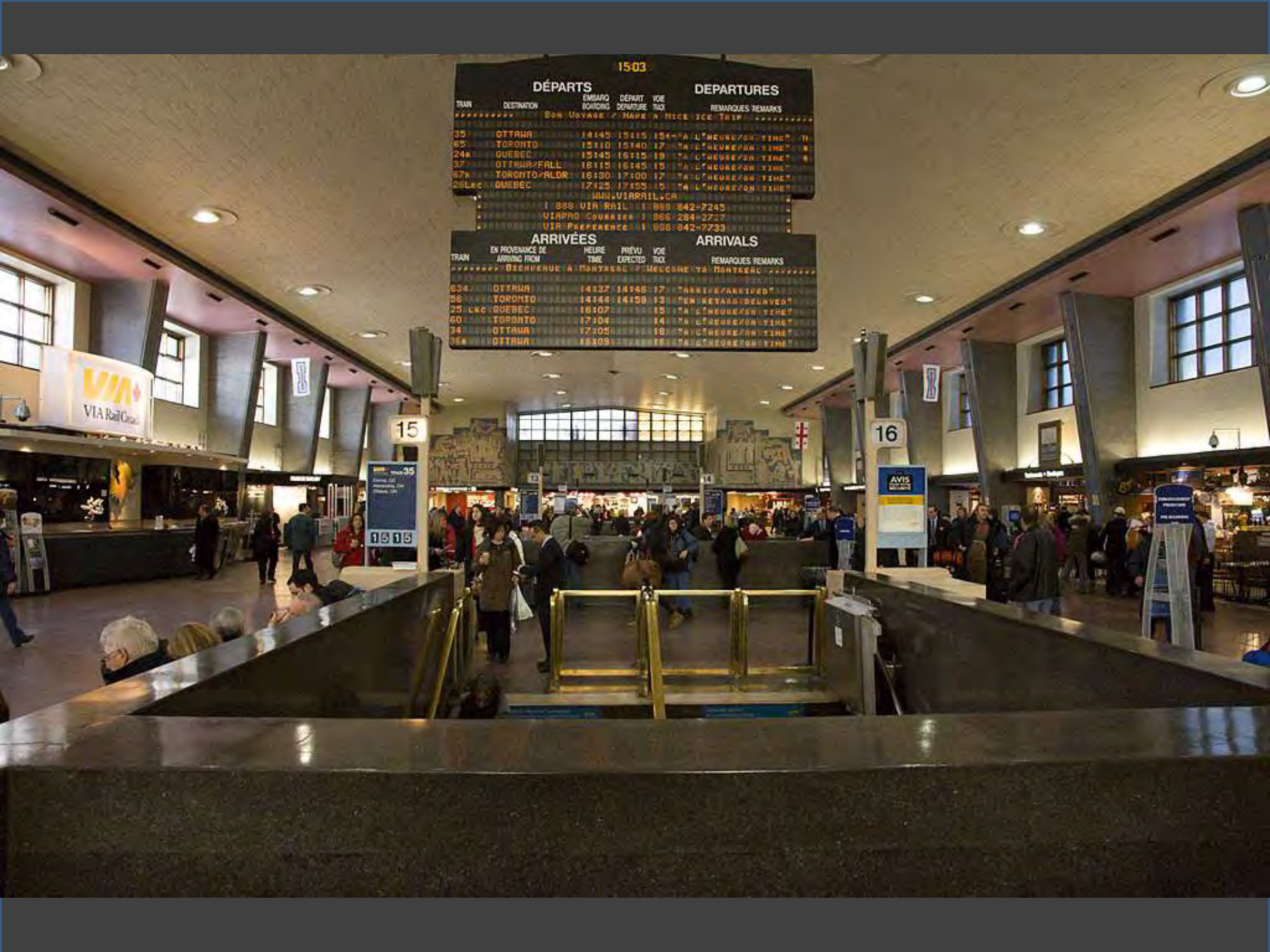
1>2



**1503**

DÉPARTS					DEPARTURES	
TRAIN	DESTINATION	EMBARQ BOARDING	DÉPART DEPARTURE	VOIE TRACK	REMARQUES REMARKS	
35	OTTAWA	15:45	15:15	15	"A U'NEURE POUR L'INTE"	
65	TORONTO	15:10	15:10	17	"A U'NEURE POUR L'INTE"	
24	QUEBEC	15:45	16:15	19	"A U'NEURE POUR L'INTE"	
37	OTTAWA/FALL	16:15	16:45	15	"A U'NEURE POUR L'INTE"	
67	TORONTO/FALD	16:30	17:00	17	"A U'NEURE POUR L'INTE"	
26Lnc	QUEBEC	17:25	17:55	15	"A U'NEURE POUR L'INTE"	
MON-VIAIRAIL.CA						
1 888 VIA RAIL   888 842-7243						
VIAPRO COURTESY   866 284-2727						
VIA PREFERENCE   888 842-7733						

ARRIVÉES					ARRIVALS	
TRAIN	EN PROVENANCE DE ARRIVING FROM	HEURE TIME	PRÉVU EXPECTED	VOIE TRACK	REMARQUES REMARKS	
BENEFICIAIRE À MONTREAL / BENEVOLENT TO MONTREAL						
634	OTTAWA	14:37	16:46	17	"ARRIVE ARRIVED"	
58	TORONTO	14:44	16:58	13	"EN RETARD DELAYED"	
25 Lnc	QUEBEC	16:07	18:15	15	"A U'NEURE POUR L'INTE"	
60	TORONTO	17:04	19:14	14	"A U'NEURE POUR L'INTE"	
34	OTTAWA	17:05	19:18	18	"A U'NEURE POUR L'INTE"	
34	OTTAWA	18:09	19:18	18	"A U'NEURE POUR L'INTE"	







# TRAIN 16

Saint-Hyacinthe, QC  
Drummondville  
Charny  
La Pocatière  
Rivière-du-Loup  
Rimouski  
Mont-Joli  
Amqui  
Matapédia  
Carleton  
New Richmond  
Caplan  
Bonaventure  
New Carlisle  
Port-Daniel  
Chandler  
Grande-Rivière  
Percé  
Barachois  
Gaspé, QC

1

8

1

5







A close-up photograph of a train car's exterior. At the top, a window with a metal frame is visible. Below the window, the train's body is composed of several horizontal metallic bands. The name "Chateau Montcalm" is printed in a bold, blue, italicized sans-serif font across one of these bands. The train is positioned on a concrete platform with a yellow safety line. The lighting is somewhat dim, suggesting an indoor or shaded environment.

***Chateau Montcalm***





























































NEW RICHMOND

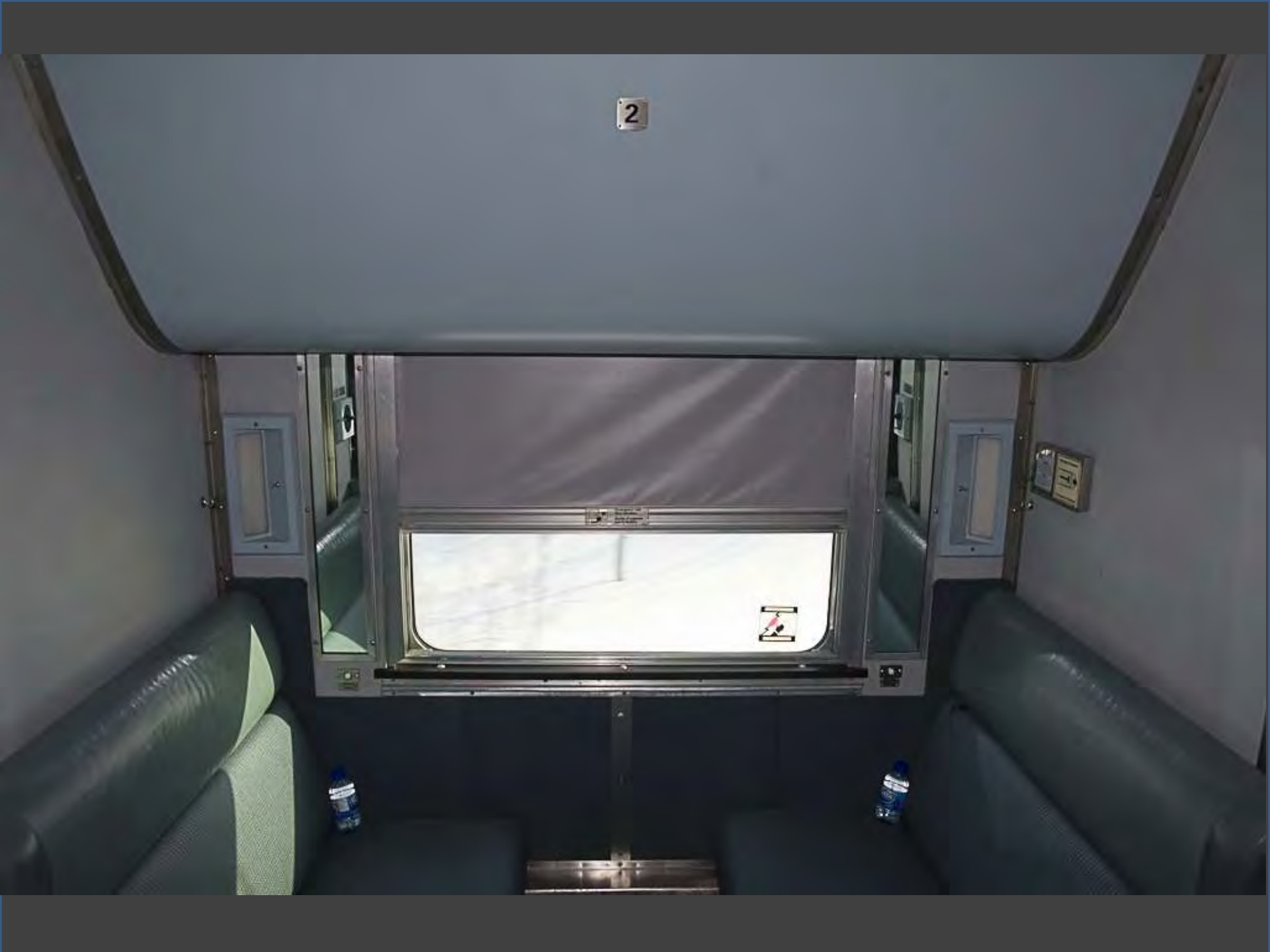
VIA Rail Canada







2































NEW CARLISLE

















































**GASPÉ**





**VIA**  
VIA Rail Canada

**VIA** GASPÉ







NO GAUGE

VIA  
RAIL

8203

8203









LOCATION & SERVICES / CAR RENTALS  
**Budget**  
←

**VIA**  
VIA Rail Canada

Chateau Boulevard











































































































**E. LAROCQUE & SONS**  
FRUITS ET LEGUMES EN GROS INC.















09:12

DÉPARTS				DEPARTURES	
TRAIN	DÉSTINATION	HEURE	VOIE	TRAIN	REMARKS
		DEPART	N°		REMARKS
09	MONTRÉAL/NEWYORK	09:10	17	"A L'HEURE/ON TIME"	"
09	TORONTO	09:10	13	"A L'HEURE/ON TIME"	"
09	CALL/OSHAWA	09:10	14	"A L'HEURE/ON TIME"	"
09	OTTAWA	09:30	19	"A L'HEURE/ON TIME"	"
09	OTTAWA	11:15	17	"A L'HEURE/ON TIME"	"
12:40	OTTAWA	12:40	17	"A L'HEURE/ON TIME"	"
1 888 VIA RAIL 1 888 942-7245					
MIRAGE COURTESY 1 888 284-2727					
VIA PREFERENCE 1 888 942-7733					

ARRIVÉES				ARRIVALS	
TRAIN	EN PROVENANCE DE	HEURE	VOIE	TRAIN	REMARKS
	ARRIVÉ DE	ATTENDUE	N°		REMARKS
***** Bienvenue à Montréal / Welcome to Montreal *****					
15	Mtl/PMX	08:15	13	"ARRIVE / ARRIVED"	"
17	GRSPE	08:30	13	"ARRIVE / ARRIVED"	"
032	QUEBEC	11:15	16	"A L'HEURE/ON TIME"	"
032	OTTAWA	14:15	14	"A L'HEURE/ON TIME"	"
034	OTTAWA	14:15	18	"A L'HEURE/ON TIME"	"
034	TORONTO	14:15	18	"A L'HEURE/ON TIME"	"

VIA  
VIA Rail Canada

16

AVIS  
AVIS

EMBARQUEMENT  
PRE-BOARDING



# Program

- Photos Near Home
- Take a Ride Across Quebec
- Chicago in the Early 1970s































































TZ  
HT  
oasts























**WARNING**  
**FAST TRAINS**  
**CROSSING**  
**DO NOT STOP**  
**ON TRACKS**

E. RAILROAD

























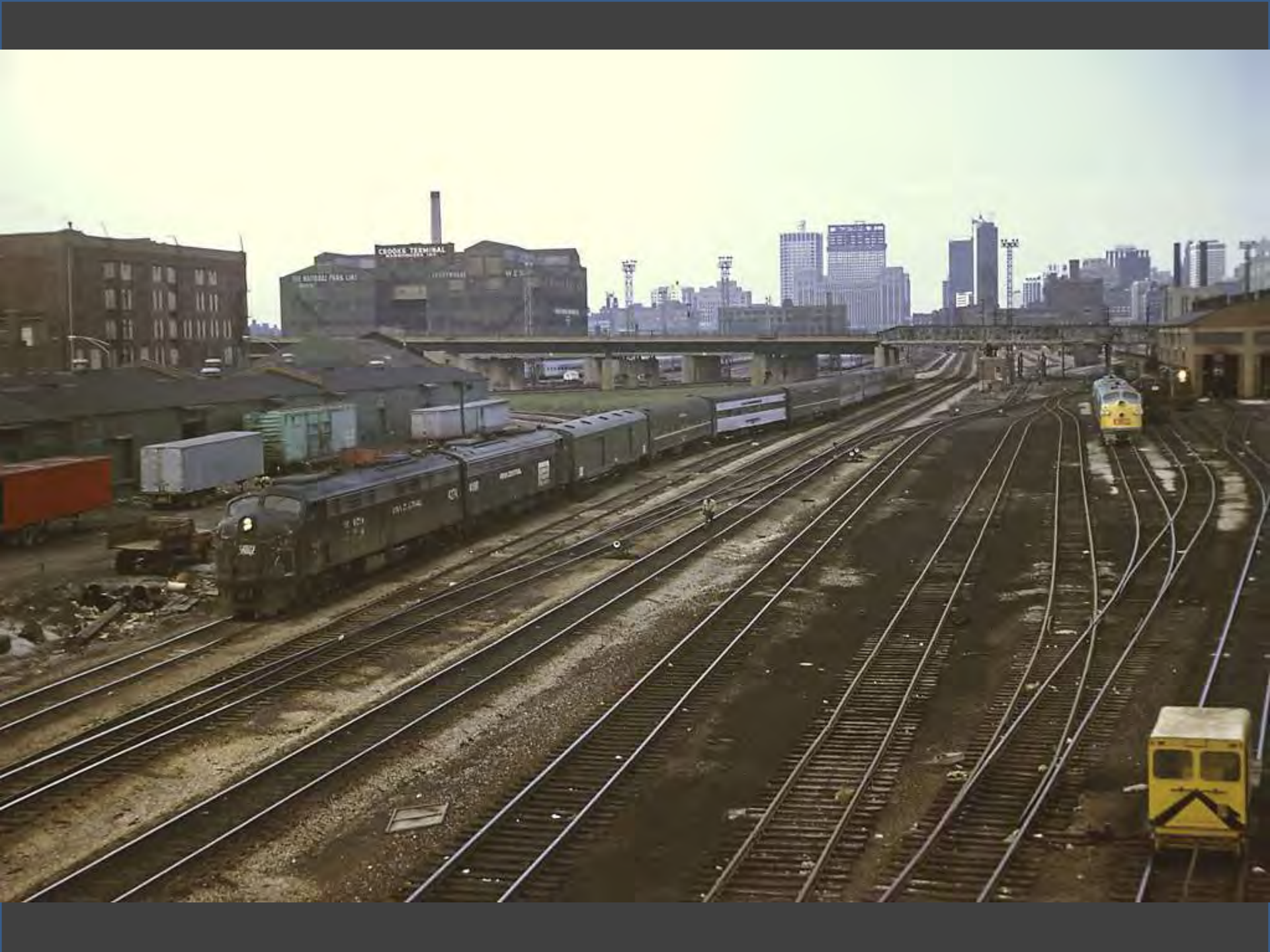
















































ALL ENRY M

NO BICYCLE RIDING  
ON DEPOT PLATFORM





















IC

50456

CAPY 7600  
LD LBT 8330  
LT VT 8870

ILLINOIS CENTRAL

LEN 41'00"  
W 9'50"  
H 7'0"  
IN 1-1  
FR 1-1  
MAY 1943

417-1-40






















 PENN CENTRAL

9225

Burlington  
CG 60 50  
3 E 4 2





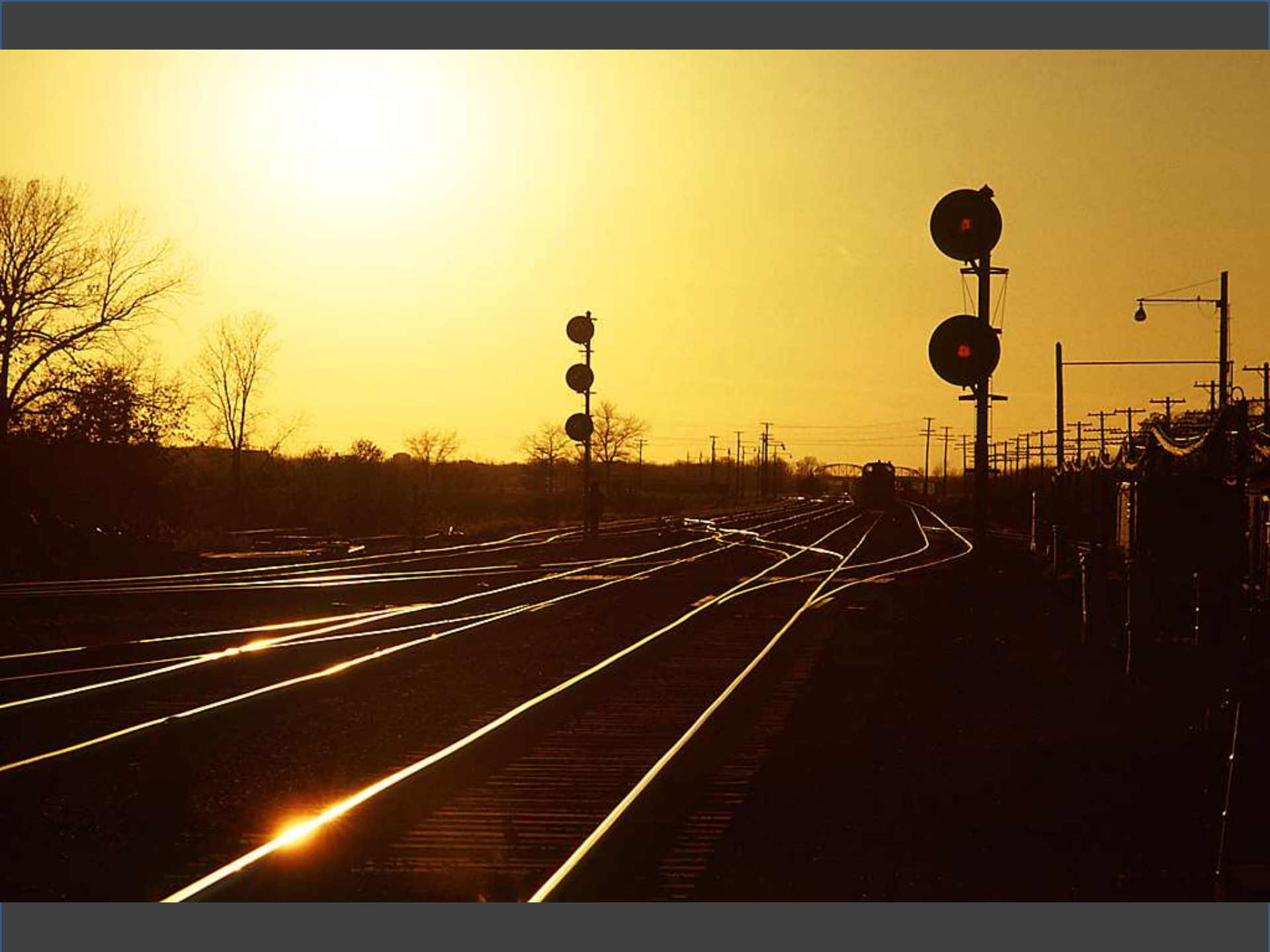




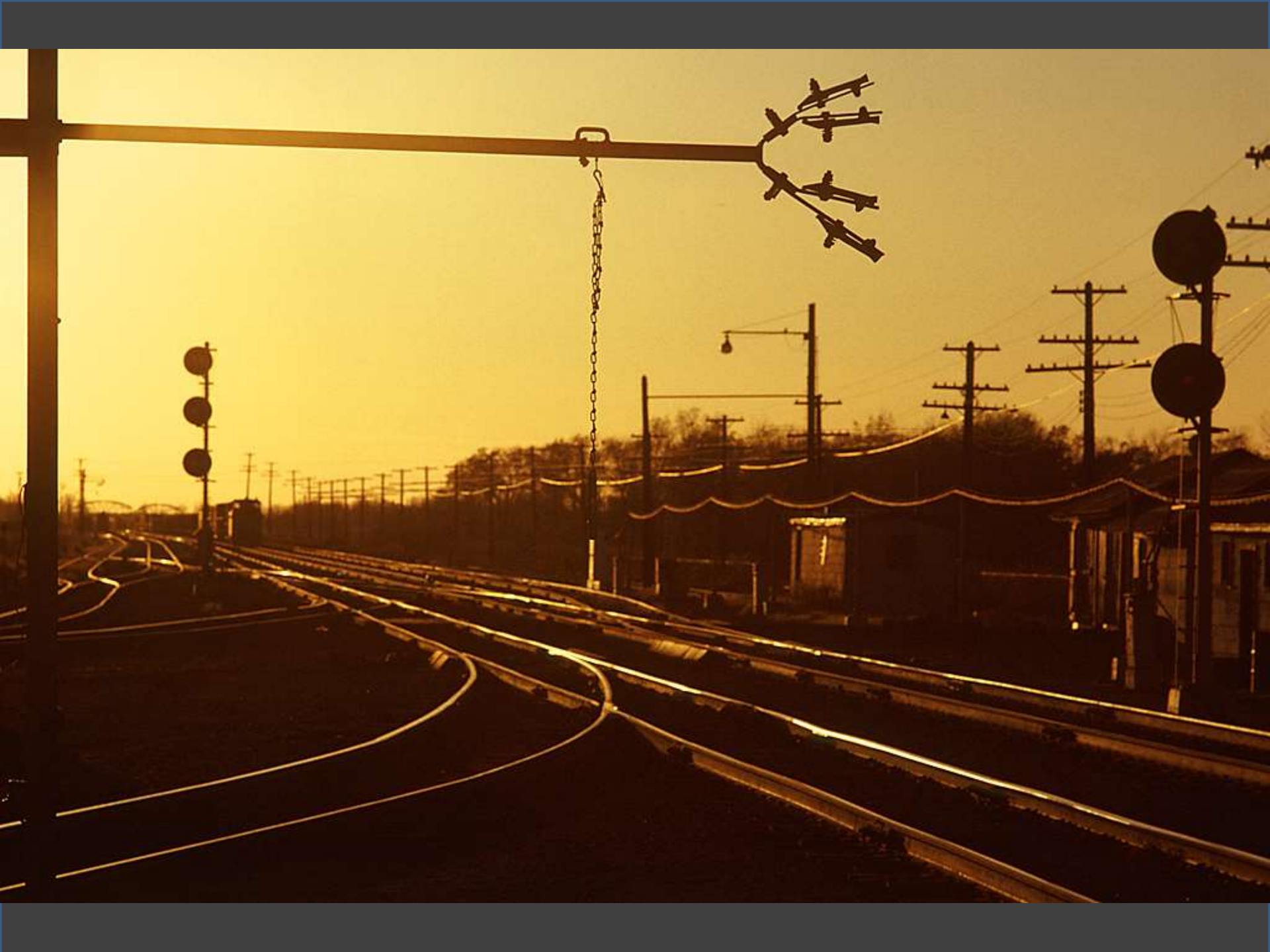
















































































3525

8003 8003

8003

SANTA FE









ROCK ISLAND LINES  
*Trailer Service*

B TTX 151756

TRAILER TRAIN

ROCK ISLAND











811 Park  
River Forest IL. 60305



George W. Hamlin  
Transportation Center  
Northwestern University  
1818 Hinman  
Evanston IL. 6204





Between New York and Chicago  
go **20th Century Limited**

LUXURY SERVICE AT NO EXTRA COST!

The famed "Century" is still the most comfortable way to go. Enjoy relaxing lounge cars, superb dining car service, your own Sleeping Car or Sleepercoach private room accommodations.

*Here are your tickets for  
the New York Central*

M... *MR. HAMLIN* .....

*The Central  
is happy to welcome you  
aboard and wishes you  
a pleasant journey*



Reservation Confirmation

for the

Chicago Railfan Tour

Itinerary

Arrive La Salle Station 8:45. Check in at special desk. Have tour.  
Leave La Salle Station 10:25. Via Chartered Bus for Santa Fe Yards.  
Arrive Santa Fe Yards 10:40. Tour of yards and lunch in diner.  
Leave Santa Fe yards 12:05. Via chartered bus for Central Station.  
Arrive Central Station. Tour of station and pictures from overhead bridge.

Tour ends at about 1:00 at Central Station. At that time, a small souvenir package will be passed out to all tour members.

Remember to bring your reservation ticket and check-in at the special desk at La Salle Street Station.

Hint: Get to La Salle Station early so you can take a look at now closed Grand Central Station and watch a few trains in La Salle.

Hint: Bring lots of film for your camera.

Hint: If you don't bring a camera or don't like the pictures with yours or want more pictures, sign up for the "Chicago Railfan Tour Picture Package" of twenty pictures for a small cost.

Don't wear the best of cloths as yards and stations are not especially known for their cleanliness.

All kinds of surprises from the souvenir package.

You can get information on the tour for possible membership in the 20th Century Railroad Club.

No cancellation of tour reservations unless there is someone to take your place. If tour is cancelled, your money will be refunded in full.

The Twentieth Century Railroad Club accepts no responsibility for any delays, missed connections, loss, damage, or injury to person or property, for any additional expense occasioned thereby, the right is retained to decline or retain any person as a member of this tour at any time.

We are looking forward to seeing you on April 9th with expectations of having a good time and making some new friends. We hope you will have as good a time as we believe you will and we would like to see you on our other trips, tours and excursions that we will have in the near future.









GOLDEN STATE

411













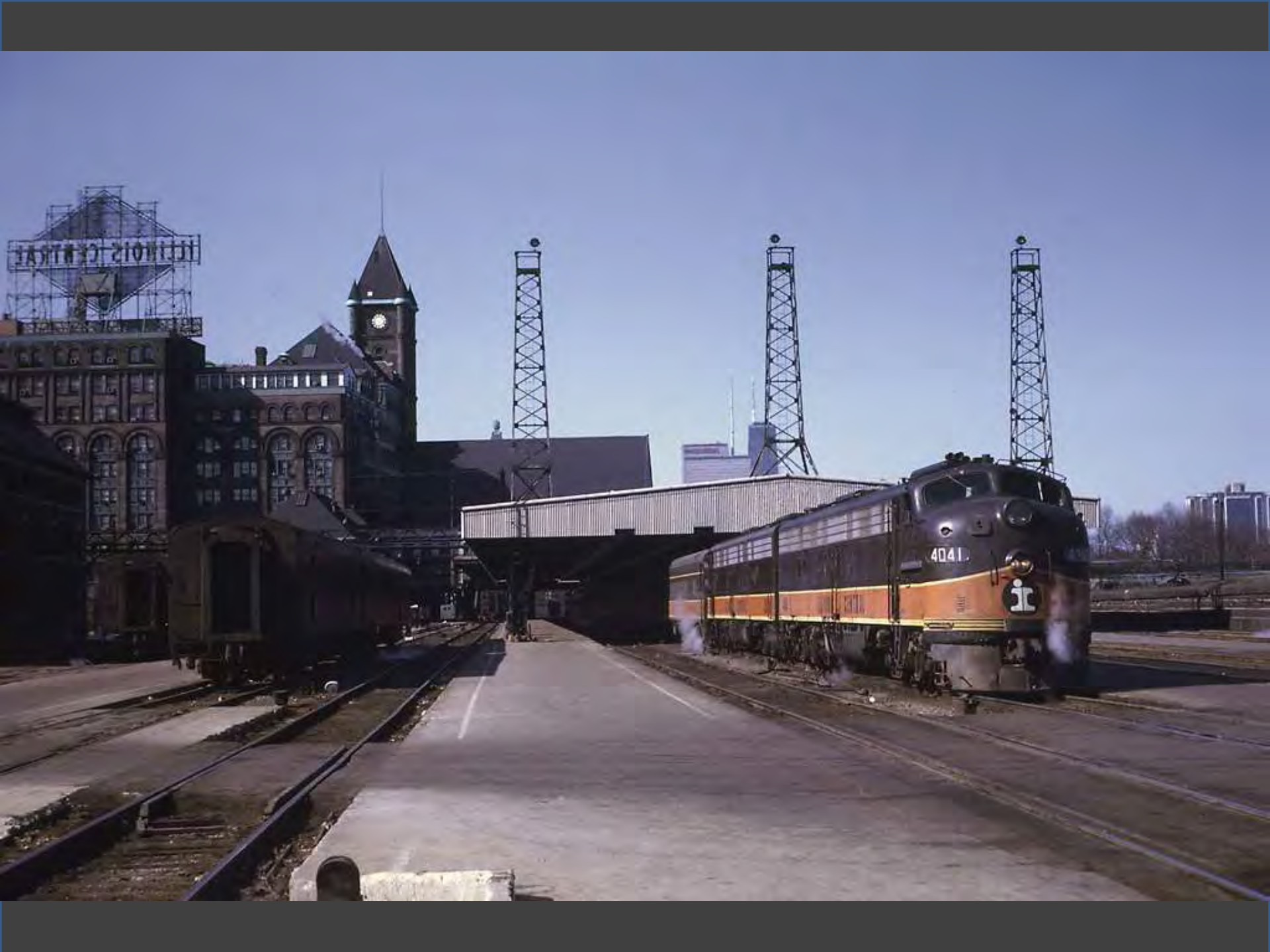
















4041

ILLINOIS CENTRAL















20<sup>TH</sup>  
CENTURY  
LIMITED

W



# Joys of Railroad Photography

Presented at  
Twentieth Century Railroad Club

April 10, 2013



George W. Hamlin  
Hamlin Transportation Consulting  
Fairfax, Virginia  
[george@georgehamlin.com](mailto:george@georgehamlin.com)



